



卓颖机械（上海）有限公司  
JOY MACHINERY (SHANGHAI) CO.,LTD.

服务热线

021-60832839/13621925718

Website: [www.shairbuild.com](http://www.shairbuild.com)

Email: [info@shairbuild.com](mailto:info@shairbuild.com)

**卓颖机械（上海）有限公司**

**JOY MACHINERY (SHANGHAI) CO.,LTD.**

地址: 上海市浦东新区川沙路1098号

ADD: No.1098, Chuansha Road, Pudong District, Shanghai, China.

邮编: 201499

Postal code: 201499

网址: [www.sh-joymachinery.com](http://www.sh-joymachinery.com)

Website: [www.sh-joymachinery.com](http://www.sh-joymachinery.com)

[www.shairbuild.com](http://www.shairbuild.com)

[www.shairbuild.com](http://www.shairbuild.com)

邮箱: [info@shairbuild.com](mailto:info@shairbuild.com)

E-mail: [info@shairbuild.com](mailto:info@shairbuild.com)

电话: 0086 21 60832839

Tel: 0086 21 60832839



2025 Version

卓颖机械（上海）有限公司  
JOY MACHINERY (SHANGHAI) CO.,LTD.

卓颖机械  
产品样册

PRODUCTS  
CATALOGUE





## 公司简介 COMPANY PROFILE

卓颖机械（上海）有限公司是一家专注于空气压缩机的专业化企业，致力于为客户提供稳定、节能、高效、智能化的压缩空气解决方案为己任，让全球用户享受卓颖产品带来的不一样的美好体验。

卓颖生产管理严格遵循 ISO9001 国际质量体系，可提供全面的智能空压机产品，包括但不限于：低于、常压、高压螺杆空压机、永磁变频双级压缩空压机、无油空压机、移动空压机、后处理设备。产品广泛应用于机械制造、食品医药、石油化工等领域。公司本着“客户的满意就是我们矢志不渝的追求”的企业理念，产品出口亚洲、欧洲、美洲、非洲等国家和地区，获得良好的市场口碑。

“卓而不凡，颖领科技”——卓颖机械（上海）有限公司欢迎各界惠顾，让我们共同携手，共创美好未来！

JOY MACHINERY (SHANGHAI) CO., LTD. specializes in air compressors, committed to providing customers with stable, energy-saving, efficient and intelligent compressed air solutions, offering global users to enjoy the unique and beautiful experience of JOY MACHINERY products.

JOY MACHINERY strictly follows the ISO9001 international quality system and can provide a comprehensive range of intelligent air compressor products, including but not limited to: low-pressure, normal pressure, high-pressure screw air compressors, permanent magnet variable frequency two-stage compression air compressors, oil-free air compressors, mobile air compressors, and post-treatment equipment. The product is widely used in fields such as mechanical manufacturing, food and medicine, and petrochemicals etc. The company adheres to the corporate philosophy of "customer satisfaction is our unwavering pursuit", our products are exported to countries and regions such as Asia, Europe, America, Africa, etc., gaining a good market reputation.

JOY MACHINERY (SHANGHAI) CO., LTD. welcomes customers from all walks of life to join hands and create a better future together, with the slogan "Extraordinary quality, Leading Technology"!



目录	CONTENTS.....	1
公司介绍	COMPANY PROFILE.....	2
固定式螺杆空压机	Stationary Screw Air Compressor.....	3
螺杆空压机	Screw Air Compressor.....	7
永磁变频螺杆空压机	Permanent Magnet (PM) Screw Air Compressor.....	8
双级压缩螺杆空压机	Double Stage Compression Screw Air Compressor.....	9
双级压缩永磁螺杆空压机	Double Stage Compression PM Screw Air Compressor.....	10
双级压缩永磁低压螺杆空压机	Double Stage Compression PM Low Pressure Screw Air Compressor.....	11
双级压缩永磁中压螺杆空压机	Double Stage Compression PM Medium Pressure Screw Air Compressor.....	12
一体式永磁变频螺杆空压机	Integrated PM Screw Air Compressor.....	13
激光切割专用--永磁变频螺杆空压机	PM Screw Air Compressor for laser cutting.....	13
水润滑无油螺杆空压机	Water Lubricate Oil-free Screw Air Compressor.....	15
工频无油螺杆空压机	Normal Oil-free Screw Air Compressor.....	19
永磁无油螺杆空压机	PM VSD Oil-free Screw Air Compressor.....	20
低压无油螺杆空压机	Low Pressure Oil-free Screw Air Compressor.....	21
中压无油螺杆空压机	Medium Pressure Oil-free Screw Air Compressor.....	21
特殊无油螺杆空压机	Special Purpose Oil-free Screw Air Compressor.....	21
干式无油螺杆空压机	Dry Oil-free Screw Air Compressor.....	23
工频干式无油螺杆空压机	Fixed Frequency Dry Oil-free Screw Air Compressor.....	25
变频干式无油螺杆空压机	VSD Dry Oil-free Screw Air Compressor.....	27
移动式螺杆空压机	Portable Screw Air Compressor.....	29
柴油移动螺杆空压机	Diesel Portable Screw Air Compressor.....	29
电动移动螺杆空压机	Electrical Portable Screw Air Compressor.....	29
小型电动移动螺杆空压机	Miniature Electrical Portable Screw Air Compressor.....	30
压缩空气净化设备	Compressed Air Purification Equipment.....	31
冷冻式冷干机	Refrigerated Air Dryer.....	32
吸附式冷干机	Adsorption Air Dryer.....	33
组合式冷干机	Combined Low Dew Point Air Dryer.....	35
精密过滤器	Precision Filter.....	35
空气储气罐	Air Receiver.....	36
应用案例	Application case.....	37
空压机系统常用配置图	Common configuration of compressor System.....	38



固定式螺杆空压机 Stationary Screw Air Compressor

螺杆空压机结构图 Screw air compressor structure



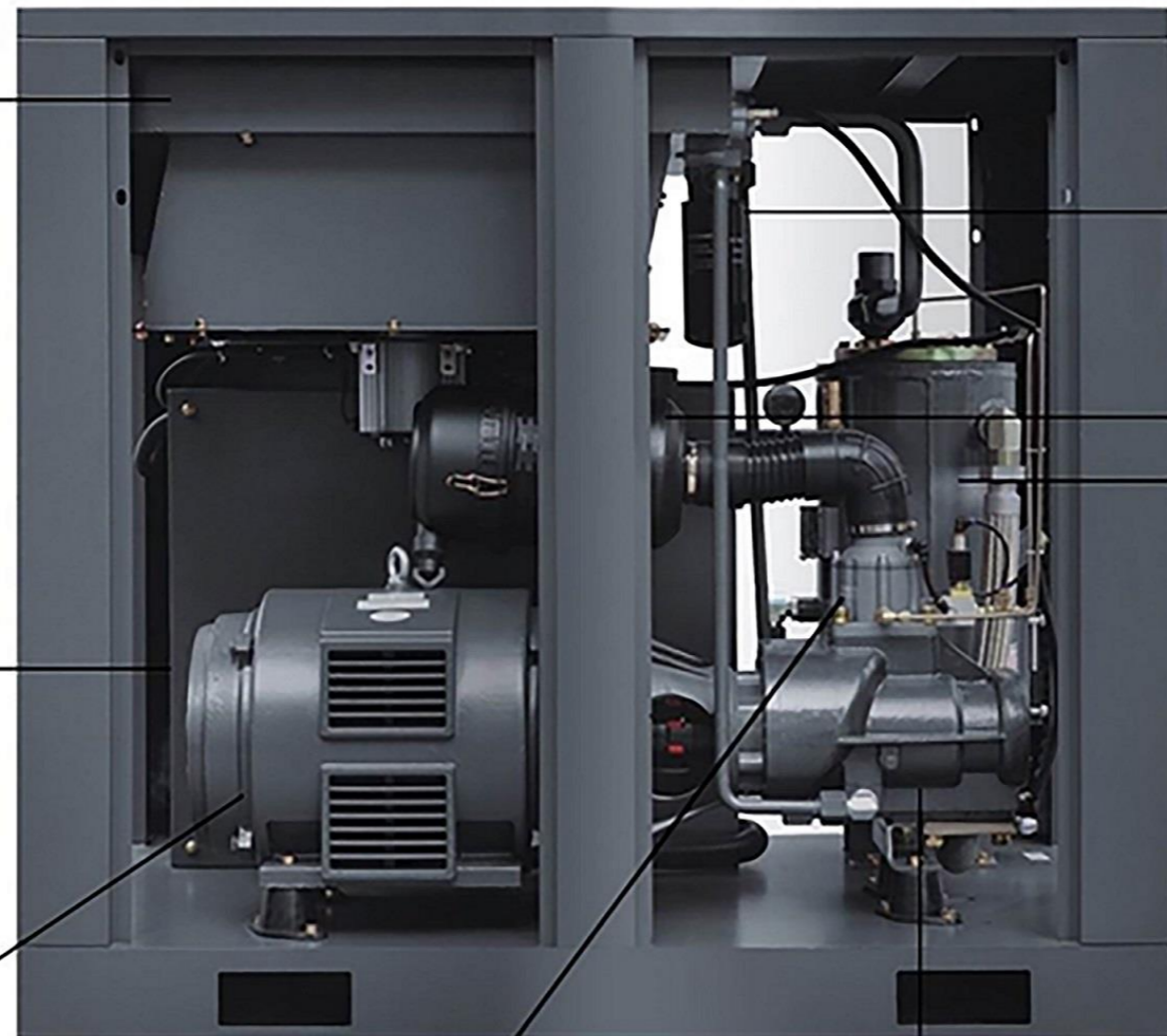
方便操作的控制系统  
Easy-to-operate control system



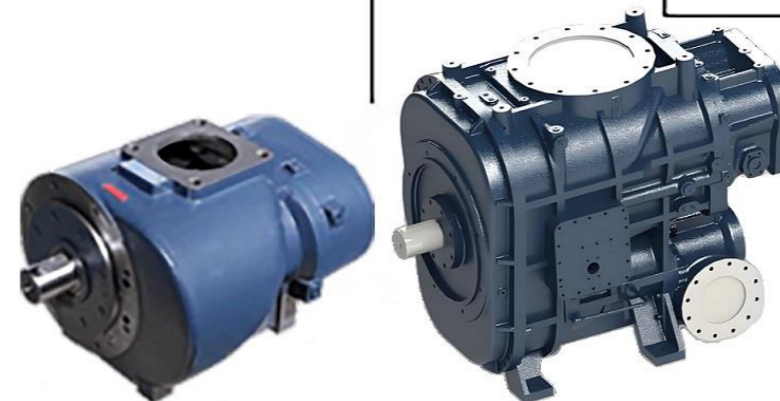
施耐德电器元件  
Schneider electric components



电机F级绝缘, SKF重载轴承  
能效比同类产品高3-5%  
Class F insulated motor, SKF heavy-duty bearing  
Energy efficiency is 3-5% higher than similar product



0-100%自动调节进气阀  
0-100% automatic adjustment  
of air intake valve



优质、高效主机  
High quality, high efficient air end



机滤  
Oil filter



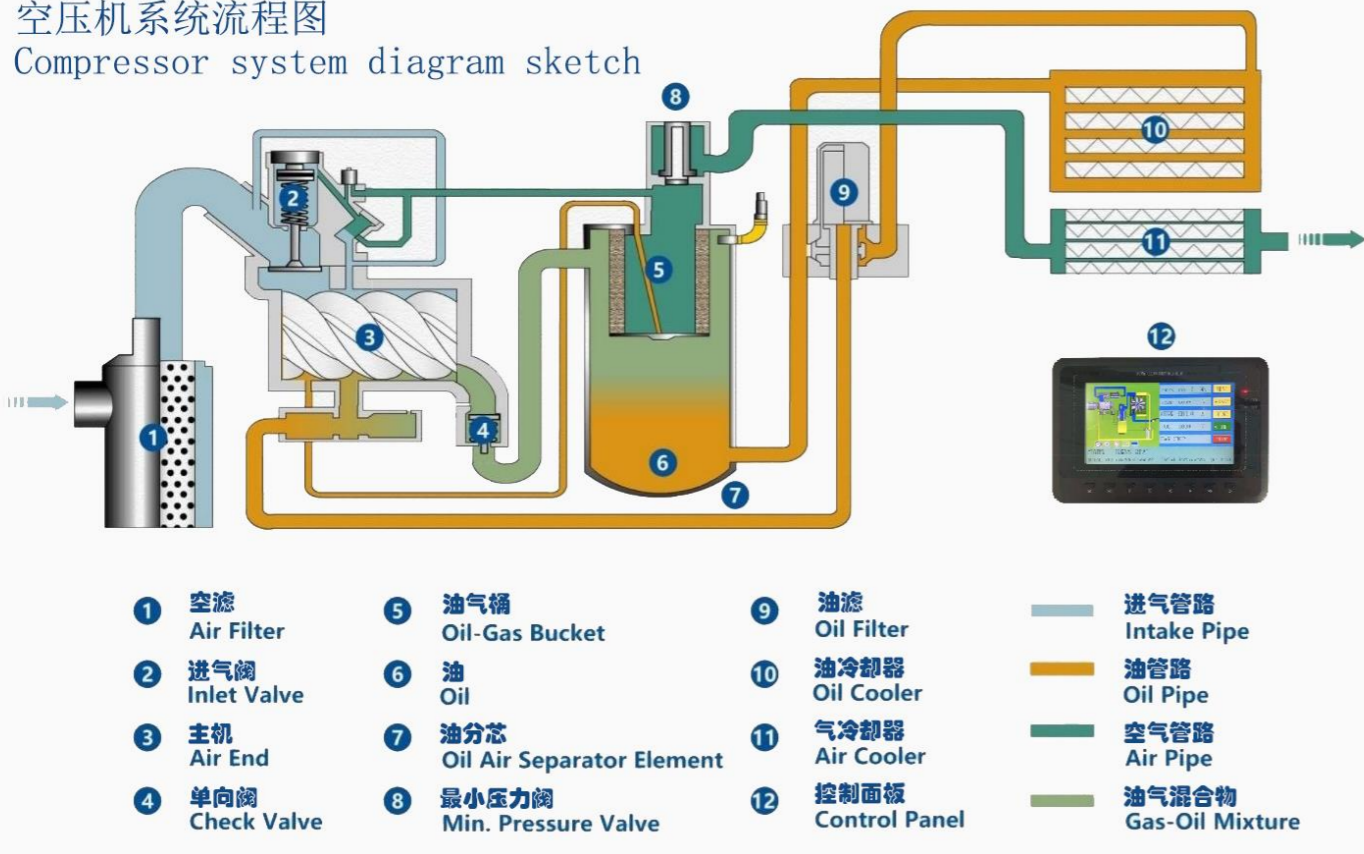
空滤  
Air filter



油分芯  
Oil/air separator



### 空压机系统流程图 Compressor system diagram sketch



### 微油螺杆机主要部件 Main components of oil lubricated screw air compressor



#### 业内领先的双级主机

双级压缩过程趋近于最节能的等温压缩, 两级压缩比单级压缩节能 10%-30%; 双级压缩, 压缩比小, 泄露更少, 轴承负荷小, 轴承寿命大大提高;

#### Advanced double compression air end

The most energy-efficient isothermal compression with two-stage energy-saving up to 10%-30%; Double stage compression, small compression ratio, less leakage, greatly improved bearing life.



#### 高效永磁同步电机

采用稀土永磁材料制造, 启动及运行时的转矩大, 启动及运行的电流小; 节能电机的工作频率范围更宽广, 运行噪音低。

#### Efficient permanent magnet synchronous motor

Made of rare earth permanent magnet materials, the big torque, small current; The working frequency range of energy-saving motors is wider and the operating noise is lower.



#### 专用阀组

螺杆压缩机专用进气阀, 机组易启动, 带自动调节功能, 降低能耗, 进气噪音低; 可靠的最小压力维持阀, 低压损, 精准控制, 保证用户用气不回流。

#### Special valves

Dedicated intake valve, easy to start unit with automatic adjustment, low flow rate, low intake noise; Reliable MPV, low pressure loss, precise control, no flow back.



#### 先进、可靠的电控系统

大尺寸彩色液晶触摸屏, 拥有良好人机交流界面; 定制矢量变频器完全监控机器的各项参数, 包括电压检测、三相不平衡检测、超压、超温等;

#### Advanced and reliable electronic control system

Large size color LCD touch screen with excellent human-machine communication interface; Customized vector inverter fully monitors various parameters: voltage, three-phase imbalance, overvoltage, overtemperature, etc.;



#### 静音离心风机

离心风机相比轴流风机, 冷却效果更好, 更节能; 风压更高, 噪音更低;

#### Silent centrifugal fan

Compared to axial flow fans, centrifugal fans have better cooling effects and are more energy-efficient; Higher wind pressure and lower noise;



#### 优质三滤

选择较好的过滤材质, 过滤精度高, 耐用性好, 压损低。

#### High quality filters

Choose a good filtering material with high filtration accuracy, good durability, and low pressure loss.



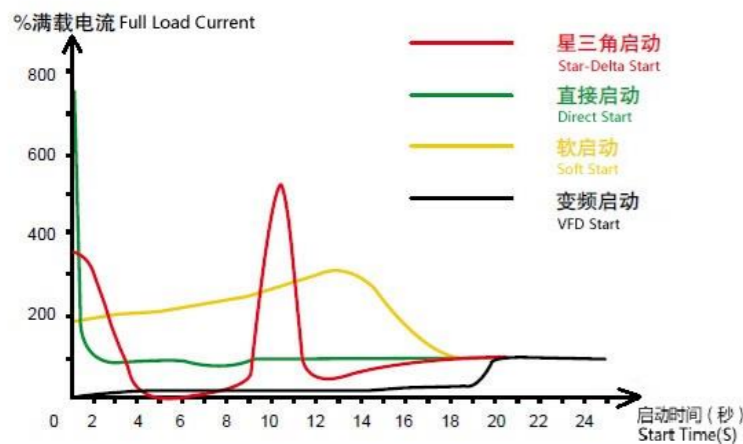
#### 优质高效的联轴器

联轴器是扭向弹性联轴器, 有失效保护功能。能有效地阻尼和减少运行过程中所产生的振动和冲击。

#### High quality and efficient couplings

The coupling is a torsional elastic coupling with failure protection function. It can effectively dampen and reduce the vibrations and impacts generated during operation.

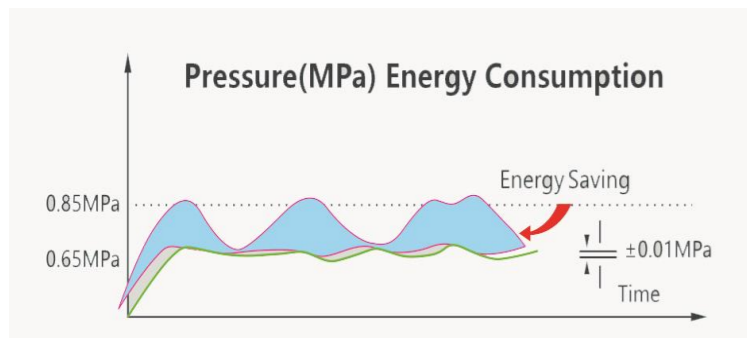
### 螺杆空压机启动方式 Start-up of screw air compressor



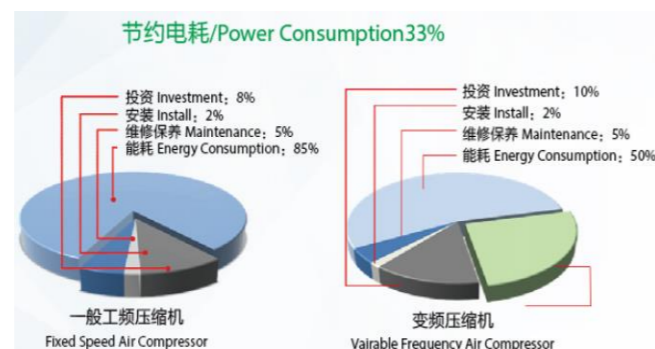
图中显示的是几种启动方式比较, 可以看出变频器是缓慢地加速启动, 启动更加平稳, 完全避免了电流峰值。

Diagram is shown in comparison with several methods of star, you can find frequency converted air compressor is slowly accelerated, which can start more smoothly, completely avoid the peak current.

### 恒压省电 Constant pressure, energy-saving



### 成本比较 Cost Comparison



## 螺杆空压机(7.5-355KW) Screw Air Compressor (7.5-355KW)



### 产品特点 Product Feature

- 电机功率 Motor power: 7.5-355 KW
- 排气量 Air delivery: 0.70 -62.00 m³/min
- 排气压力 Pressure: 0.70-1.30 Mpa

规格参数表 Technical Parameters										
卓颖机械(上海)有限公司 JOY MACHINERY (SHANGHAI) CO.,LTD.										
型号Model	JM-7.5A	JM-11A	JM-15A	JM-22A	JM-30A	JM-37A	JM-45A	JM-55A	JM-75A	
排气量/排气压力 Capacity/Pressure (m³/min/Mpa)	1.20/0.7	2.10/0.7	2.50/0.7	3.90/0.7	5.30/0.7	6.80/0.7	7.50/0.7	10.50/0.7	13.20/0.7	
	1.10/0.8	1.80/0.8	2.30/0.8	3.60/0.8	5.00/0.8	6.50/0.8	7.20/0.8	10.00/0.8	12.90/0.8	
	0.90/1.0	1.60/1.0	2.10/1.0	3.10/1.0	4.30/1.0	5.60/1.0	6.20/1.0	8.30/1.0	10.80/1.0	
	0.70/1.3	1.00/1.3	1.60/1.3	2.70/1.3	3.10/1.3	4.70/1.3	5.60/1.3	7.20/1.3	9.10/1.3	
电动机 Motor	功率Power(KW)	7.5	11	15	22	30	37	45	55	75
	马力Power(HP)	10	15	20	30	40	50	60	75	100
	电压V/频率Hz	380V/3Ph/50Hz,特殊电压可定制, Special voltage can be customized								
	启动方式Start	Y-Δ启动 Y-Δ Start								
噪音 Noise DB (A)	70±2	70±2	70±2	72±2	72±2	72±2	72±2	72±2	75±2	
使用环境温度(°C) Ambient Temp	-5°C ~ +45°C									
排气温度(°C) Discharge Air Temp	≤ 环境温度+15 °C ≤ Ambient temperature +15 °C									
外形尺寸 Size	长Length(mm)	850	1050	1050	1300	1300	1400	1400	1750	1750
	宽Weight(mm)	645	750	750	895	895	960	960	1237	1237
	高Height(mm)	800	1050	1050	1120	1120	1300	1300	1660	1660
出口管径Outlet (Inch)	Rp1/2	Rp3/4	Rp3/4	Rp1	Rp1	G1 1/2	G1 1/2	G2	G2	
机组重量Weight(KG)	200	230	260	320	460	520	750	980	1100	

型号Model	JM-90A	JM-110A	JM-132A	JM-160A	JM-185A	JM-220A	JM-250A	JM-315A	JM-355A	
排气量/排气压力 Capacity/Pressure (m³/min/Mpa)	16.20/0.7	21.60/0.7	23.20/0.7	29.80/0.7	31.20/0.7	37.50/0.7	42.50/0.7	56.00/0.7	62.00/0.7	
	15.60/0.8	19.90/0.8	22.80/0.8	28.10/0.8	30.30/0.8	36.50/0.8	41.20/0.8	54.00/0.8	61.00/0.8	
	13.50/1.0	16.30/1.0	20.20/1.0	22.50/1.0	27.20/1.0	30.90/1.0	39.00/1.0	49.00/1.0	56.00/1.0	
	11.50/1.3	14.50/1.3	17.00/1.3	21.50/1.3	22.50/1.3	28.50/1.3	31.50/1.3	43.00/1.3	47.00/1.3	
电动机 Motor	功率Power(KW)	90	110	132	160	185	220	250	315	
	马力Power(HP)	120	150	175	220	250	300	350	420	
	电压V/频率Hz	380V/3Ph/50Hz,特殊电压可定制, Special voltage can be customized								
	启动方式Start	Y-Δ启动 Y-Δ Start								
噪音 Noise DB (A)	75±2	75±2	80±2	80±2	81±2	81±2	81±2	81±2	84±2	
使用环境温度(°C) Ambient Temp	-5°C ~ +45°C									
排气温度(°C) Discharge Air Temp	≤ 环境温度+15 °C ≤ Ambient temperature +15 °C									
外形尺寸 Size	长Length(mm)	2000	2000	2000	2900	3200	3200	3500	3800	4300
	宽Weight(mm)	1540	1540	1540	1625	1880	1880	2280	2300	2300
	高Height(mm)	1800	1800	1800	1800	1890	1890	2250	2200	2430
出口管径Outlet (Inch)	G2 1/2	G2 1/2	G1 1/2	DN80	DN80	DN80	DN100	DN125	DN150	
机组重量Weight(KG)	1700	1850	2100	2500	2630	2900	3300	7000	8000	

A 代表风冷 A represents compressor is cooled by air. W 代表水冷 W represents compressor is cooled by water.

## 永磁变频螺杆空压机 (7.5-250KW) Permanent Magnet (PM) Screw Air Compressor (7.5-250KW)



### 产品特点 Product Feature

- 电机功率 Motor power: 7.5-250KW
- 排气量 Air delivery: 0.70 -42.30 m³/min
- 排气压力 Pressure: 0.70-1.30 Mpa

规格参数表 Technical Parameters										
卓颖机械(上海)有限公司 JOY MACHINERY (SHANGHAI) CO.,LTD.										
型号Model	JM-7.5APM	JM-11APM	JM-15APM	JM-22APM	JM-30APM	JM-37APM	JM-45APM	JM-55APM	JM-75APM	
排气量/排气压力 Capacity/Pressure (m³/min/Mpa)	1.20/0.7	2.10/0.7	2.50/0.7	3.90/0.7	5.30/0.7	6.80/0.7	7.50/0.7	10.50/0.7	13.20/0.7	
	1.10/0.8	1.80/0.8	2.30/0.8	3.60/0.8	5.00/0.8	6.50/0.8	7.20/0.8	10.00/0.8	12.90/0.8	
	0.90/1.0	1.60/1.0	2.10/1.0	3.10/1.0	4.30/1.0	5.60/1.0	6.20/1.0	8.30/1.0	10.80/1.0	
	0.70/1.3	1.00/1.3	1.60/1.3	2.70/1.3	3.10/1.3	4.70/1.3	5.60/1.3	7.20/1.3	9.10/1.3	
电动机 Motor	功率Power(KW)	7.5	11	15	22	30	37	45	55	75
	马力Power(HP)	10	15	20	30	40	50	60	75	100
	电压V/频率Hz	380V/3Ph/50Hz,特殊电压可定制, Special voltage can be customized								
	启动方式Start	变频启动 VSD Start								
噪音 Noise DB (A)	70±2	70±2	70±2	72±2	72±2	72±2	72±2	72±2	75±2	
使用环境温度(°C) Ambient Temp	-5 ~ +45									
排气温度(°C) Discharge Air Temp	≤ 环境温度+15 °C ≤ Ambient temperature +15 °C									
外形尺寸 Size	长Length(mm)	730	1000	1000	1050	1250	1250	1750	1750	1750
	宽Weight(mm)	520	660	660	825	900	900	1237	1237	1237
	高Height(mm)	840	1050	1050	1115	1300	1300	1660	1660	1660
出口管径Outlet (Inch)	Rp1/2	Rp3/4	Rp3/4	Rp1	G1 1/2	G1 1/2	G2	G2	G2	
机组重量Weight(KG)	150	220	230	300	420	450	880	1050	1200	

型号Model	JM-90APM	JM-110APM	JM-132APM	JM-160APM	JM-185APM	JM-200APM	JM-220APM	JM-250APM
排气量/排气压力 Capacity/Pressure (m³/min/Mpa)	16.20/0.7	21.60/0.7	23.20/0.7	29.80/0.7	31.20/0.7	36.50/0.7	37.50/0.7	42.30/0.7
	15.60/0.8	19.90/0.8	22.80/0.8	28.10/0.8	30.30/0.8	35.00/0.8	36.50/0.8	41.20/0.8
	13.50/1.0	16.30/1.0	20.20/1.0	22.50/1.0	27.20/1.0	29.20/1.0	30.90/1.0	36.90/1.0
	11.50/1.3	14.50/1.3	17.00/1.3	21.50/1.3	22.50/1.3	25.50/1.3	28.50/1.3	31.50/1.3
电动机 Motor	功率Power(KW)	90	110	132	160	185	200	220
	马力Power(HP)	120	150	175	220	250	275	300
	电压V/频率Hz	380V/3Ph/50Hz,特殊电压可定制, Special voltage can be customized						
	启动方式Start	变频启动 VSD Start						
噪音 Noise DB (A)	75±2	75±2	80±2	80±2	81±2	81±2	81±2	84±2
使用环境温度(°C) Ambient Temp	-5°C ~ +45°C							
排气温度(°C) Discharge Air Temp	≤ 环境温度+15 °C ≤ Ambient temperature +15 °C							
外形尺寸 Size	长Length(mm)	2000	2000	2900	2900	3200	3800	3200
	宽Weight(mm)	1540	1540	1625	1625	1880	2300	1880
	高Height(mm)	1800	1800	1800	1800	1890	2300	1890
出口管径Outlet (Inch)	G2	G2	DN80	DN80	DN80	DN125	DN80	DN100
机组重量Weight(KG)	1800	1900	2100	2600	2800	4800	3100	3600

## 双级压缩螺杆空压机 (15-355KW)

### Double Stage Compression Screw Air Compressor (15-355KW)



#### 产品特点 Product Feature

- 电机功率 Motor power: 22-400 KW
- 排气量 Air delivery: 2.70 -89.0 m³/min
- 排气压力 Pressure: 0.70-1.30 Mpa

#### 规格参数表 Technical Parameters

型号Model	JM-22APMII	JM-30APMII	JM-37APMII	JM-45APMII	JM-55APMII	JM-75WPMII	JM-90WPMII	JM-110WPMII	JM-132WPMII	
排气量/排气压力 Capacity/Pressure (m³/min/Mpa)	4.30/0.7	6.40/0.7	8.00/0.7	10.50/0.7	12.80/0.7	16.80/0.7	20.60/0.7	24.30/0.7	27.70/0.7	
	4.10/0.8	5.90/0.8	7.20/0.8	9.60/0.8	12.20/0.8	15.90/0.8	19.90/0.8	23.20/0.8	26.20/0.8	
	3.50/1.0	---/1.0	6.80/1.0	9.10/1.0	11.30/1.0	13.90/1.0	17.60/1.0	20.50/1.0	23.00/1.0	
	2.70/1.3	3.90/1.3	5.40/1.3	6.80/1.3	8.00/1.3	11.50/1.3	14.00/1.3	16.50/1.3	19.00/1.3	
电动机 Motor	功率Power(KW)	22	30	37	45	55	75	90	132	
	马力Power(HP)	30	40	50	60	75	100	120	180	
	电压V/频率Hz	380V/3Ph/50Hz,特殊电压可定制, Special voltage can be customized								
	启动方式Start	Y-Δ启动 Y-Δ Start								
噪音 Noise DB (A)	72±2	72±2	72±2	72±2	75±2	75±2	75±2	80±2	80±2	
使用环境温度(°C) Ambient Temp	-5°C ~ +45°C									
排气温度(°C) Discharge Air Temp	≤ 环境温度+15°C ≤ Ambient temperature +15°C									
外形尺寸 Size	长Length(mm)	1300	1400	1500	1750	1750	2000	2000	2900	2900
	宽Weight(mm)	980	1100	1100	1237	1237	1540	1540	1625	1625
	高Height(mm)	1220	1450	1350	1660	1660	1800	1800	1800	1800
出口管径Outlet (Inch)	G1"	G1 1/2"	G1 1/2"	G2"	G2"	G2 1/2"	G2 1/2"	DN80	DN80	
机组重量Weight(KG)	560	800	900	1170	1560	1800	2100	2600	2900	

型号Model	JM-160WPMII	JM-185WPMII	JM-200WPMII	JM-220WPMII	JM-250WPMII	JM-280WPMII	JM-315WPMII	JM-355WPMII	JM-400WPMII	
排气量/排气压力 Capacity/Pressure (m³/min/Mpa)	33.50/0.7	41.20/0.7	43.20/0.7	47.00/0.7	55.00/0.7	58.00/0.7	62.10/0.7	81.00/0.7	89.00/0.7	
	32.00/0.8	38.00/0.8	40.50/0.8	46.10/0.8	51.60/0.8	55.00/0.8	60.00/0.8	78.00/0.8	84.50/0.8	
	30.30/1.0	33.60/1.0	39.70/1.0	41.70/1.0	46.20/1.0	52.00/1.0	54.00/1.0	64.00/1.0	77.00/1.0	
	26.00/1.3	29.00/1.3	31.50/1.3	35.00/1.3	40.50/1.3	43.00/1.3	52.00/1.3	56.00/1.3	64.00/1.3	
电动机 Motor	功率Power(KW)	160	185	200	220	250	280	315	400	
	马力Power(HP)	215	250	270	300	350	375	420	540	
	电压V/频率Hz	380V/3Ph/50Hz,特殊电压可定制, Special voltage can be customized								
	启动方式Start	Y-Δ启动 Y-Δ Start								
噪音 Noise DB (A)	80±2	82±2	82±2	82±2	84±2	82±2	84±2	84±2	86±2	
使用环境温度(°C) Ambient Temp	-5°C ~ +45°C									
排气温度(°C) Discharge Air Temp	≤ 环境温度+15°C ≤ Ambient temperature +15°C									
外形尺寸 Size	长Length(mm)	3200	3500	3500	3500	3800	3800	3800	4000	4200
	宽Weight(mm)	1880	2280	2280	2280	2315	2300	2315	2300	2350
	高Height(mm)	1890	2250	2250	2250	2250	2200	2250	2320	2350
出口管径Outlet (Inch)	DN80	DN100	DN100	DN100	DN125	DN125	DN125	DN125	DN150	
机组重量Weight(KG)	3600	5200	5500	6200	6900	6800	6900	8000	9000	

## 双级压缩永磁变频螺杆空压机 (15-355KW)

### Double Stage Compression Permanent Magnet (PM) Screw Air Compressor (15-355KW)



#### 产品特点 Product Feature

- 电机功率 Motor power: 22-400 KW
- 排气量 Air delivery: 2.70 -89.00 m³/min
- 排气压力 Pressure: 0.70-1.30 Mpa

#### 规格参数表 Technical Parameters

型号Model	JM-22APMII	JM-30APMII	JM-37APMII	JM-45APMII	JM-55APMII	JM-75WPMII	JM-90WPMII	JM-110WPMII	JM-132WPMII	
排气量/排气压力 Capacity/Pressure (m³/min/Mpa)	4.30/0.7	6.40/0.7	8.00/0.7	10.50/0.7	12.80/0.7	16.80/0.7	20.60/0.7	24.30/0.7	27.70/0.7	
	4.10/0.8	5.90/0.8	7.20/0.8	9.60/0.8	12.20/0.8	15.90/0.8	19.90/0.8	23.20/0.8	26.20/0.8	
	3.50/1.0	---/1.0	6.80/1.0	9.10/1.0	11.30/1.0	13.90/1.0	17.60/1.0	20.50/1.0	23.00/1.0	
	2.70/1.3	3.90/1.3	5.40/1.3	6.80/1.3	8.00/1.3	11.50/1.3	14.00/1.3	16.50/1.3	19.00/1.3	
电动机 Motor	功率Power(KW)	22	30	37	45	55	75	90	132	
	马力Power(HP)	30	40	50	60	75	100	120	180	
	电压V/频率Hz	380V/3Ph/50Hz,特殊电压可定制, Special voltage can be customized								
	启动方式Start	变频启动 VSD Start								
噪音 Noise DB (A)	72±2	72±2	72±2	72±2	75±2	75±2	75±2	80±2	80±2	
使用环境温度(°C) Ambient Temp	-5 ~ +45									
排气温度(°C) Discharge Air Temp	≤ 环境温度+15°C ≤ Ambient temperature +15°C									
外形尺寸 Size	长Length(mm)	1300	1400	1500	1750	1750	2000	2000	2900	2900
	宽Weight(mm)	980	1100	1100	1237	1237	1540	1540	1625	1625
	高Height(mm)	1220	1450	1350	1660	1660	1800	1800	1800	1800
出口管径Outlet (Inch)	G1"	G1 1/2"	G1 1/2"	G2"	G2"	G2 1/2"	G2 1/2"	DN80	DN80	
机组重量Weight(KG)	560	800	900	1170	1560	1800	2100	2600	2900	

型号Model	JM-160WPMII	JM-185WPMII	JM-200WPMII	JM-220WPMII	JM-250WPMII	JM-280WPMII	JM-315WPMII	JM-355WPMII	JM-400WPMII	
排气量/排气压力 Capacity/Pressure (m³/min/Mpa)	33.50/0.7	41.20/0.7	43.20/0.7	47.00/0.7	55.00/0.7	58.00/0.7	62.10/0.7	81.00/0.7	89.00/0.7	
	32.00/0.8	38.00/0.8	40.50/0.8	46.10/0.8	51.60/0.8	55.00/0.8	60.00/0.8	78.00/0.8	84.50/0.8	
	30.30/1.0	33.60/1.0	39.70/1.0	41.70/1.0	46.20/1.0	52.00/1.0	54.00/1.0	64.00/1.0	77.00/1.0	
	26.00/1.3	29.00/1.3	31.50/1.3	35.00/1.3	40.50/1.3	43.00/1.3	52.00/1.3	56.00/1.3	64.00/1.3	
电动机 Motor	功率Power(KW)	160	185	200	220	250	280	315	400	
	马力Power(HP)	215	250	270	300	350	375	420	540	
	电压V/频率Hz	380V/3Ph/50Hz,特殊电压可定制, Special voltage can be customized								
	启动方式Start	变频启动 VSD Start								
噪音 Noise DB (A)	80±2	82±2	82±2	82±2	84±2	82±2	84±2	84±2	86±2	
使用环境温度(°C) Ambient Temp	-5°C ~ +45°C									
排气温度(°C) Discharge Air Temp	≤ 环境温度+15°C ≤ Ambient temperature +15°C									
外形尺寸 Size	长Length(mm)	3200	3500	3500	3500	3800	3800	3800	4000	4200
	宽Weight(mm)	1880	2280	2280	2280	2315	2300	2315	2300	2350
	高Height(mm)	1890	2250	2250	2250	2250	2200	2250	2320	2350
出口管径Outlet (Inch)	DN80	DN100	DN100	DN100	DN125	DN125	DN125	DN125	DN150	
机组重量Weight(KG)	3600	5200	5500	6200	6900	6800	6900	8000	9000	

### 双级压缩永磁变频低压螺杆空压机 (15-315KW)

### Double Stage Compression PM Low Pressure Screw Air Compressor (15-315KW)



#### 产品特点 Product Feature

- 电机功率 Motor Power :11-315 KW
- 排气量 Discharge delivery: 2.80-82.00 m³/min
- 排气压力 Discharge Pressure: 0.4-0.5 Mpa

规格参数表 Technical Parameters		卓颖机械(上海)有限公司 JOY MACHINERY (SHANGHAI) CO.,LTD.								
型号Model	JM-11APMII	JM-15APMII	JM-22APMII	JM-30APMII	JM-37APMII	JM-45APMII	JM-55APMII	JM-75APMII	JM-90APMII	
排气量/排气压力 Capacity/Pressure (m³/min/Mpa)	3.20/0.4	4.20/0.4	6.20/0.4	8.50/0.4	10.30/0.4	12.20/0.4	15.50/0.4	20.50/0.4	26.50/0.4	
	2.80/0.5	3.60/0.5	6.00/0.5	7.50/0.5	9.50/0.5	11.50/0.5	14.50/0.5	19.50/0.5	23.50/0.5	
电动机 Motor	功率(KW)	11	15	22	30	37	45	55	75	90
	马力(HP)	15	20	30	40	50	60	75	100	120
	电压/频率Hz	380V/3Ph/50Hz,特殊电压可定制, Special voltage can be customized								
启动方式Start	变频启动 VSD Start									
噪音Noise DB (A)	72±2	72±2	72±2	72±2	72±2	72±2	75±2	75±2	75±2	
使用环境温度(°C) Working Temp	-5°C ~ +45°C									
排气温度(°C) Discharge Air Temp	≤ 环境温度+15 °C ≤ Ambient temperature +15 °C									
外形尺寸 Size	长Length(mm)	1300	1300	1400	1400	2100	2100	2100	2450	2600
	宽Weight(mm)	980	980	1100	1100	1440	1440	1440	1700	1900
	高Height(mm)	1220	1220	1450	1450	1650	1650	1650	1765	1890
出口管径Outlet (Inch)	G1"	G1"	G1 1/2"	G1 1/2"	G2 1/2"	G2 1/2"	G2 1/2"	DN65	DN80	
机组重量Weight(KG)	500	550	800	850	1600	1650	1700	2400	2800	

型号Model	JM-110APMII	JM-132APMII	JM-160APMII	JM-185APMII	JM-200APMII	JM-220APMII	JM-250APMII	JM-280APMII	JM-315APMII	
排气量/排气压力 Capacity/Pressure (m³/min/Mpa)	30.00/0.4	38.00/0.4	47.00/0.4	52.00/0.4	57.00/0.4	62.00/0.4	65.00/0.4	---/0.4	---/0.4	
	27.00/0.5	35.00/0.5	42.00/0.5	45.00/0.5	53.50/0.5	55.00/0.5	61.00/0.5	70.50/0.5	82.00/0.5	
电动机 Motor	功率(KW)	110	132	160	185	200	220	250	280	315
	马力(HP)	150	175	215	250	270	300	350	375	420
	电压/频率Hz	380V/3Ph/50Hz,特殊电压可定制, Special voltage can be customized								
启动方式Start	变频启动 VSD Start									
噪音Noise DB (A)	80±2	80±2	80±2	82±2	82±2	82±2	84±2	84±2	84±2	
使用环境温度(°C) Working Temp	-5°C ~ +45°C									
排气温度(°C) Discharge Air Temp	≤ 环境温度+15 °C ≤ Ambient temperature +15 °C									
外形尺寸 Size	长Length(mm)	2600	3250	3250	3600	3800	4200	4200	4200	4200
	宽Weight(mm)	1900	2100	2100	2300	2300	2350	2350	2350	2350
	高Height(mm)	1890	2200	2200	2290	2200	2350	2350	2350	2350
出口管径Outlet (Inch)	DN80	DN100	DN100	DN125	DN125	DN125	DN125	DN150	DN150	
机组重量Weight(KG)	2900	4000	4400	6000	6500	7500	8000	8500	9000	

### 双级压缩永磁变频中压螺杆空压机 (11-355KW)

### Double Stage Compression PM Medium Pressure Screw Air Compressor (11-355KW)



#### 产品特点 Product Feature

- 电机功率 Motor power: 11-355 KW
- 排气量 Air delivery: 0.90 -33.50 m³/min
- 排气压力 Pressure: 2.0-3.0 Mpa

规格参数表 Technical Parameters		卓颖机械(上海)有限公司 JOY MACHINERY (SHANGHAI) CO.,LTD.								
型号Model	JM-11APMII	JM-15APMII	JM-22APMII	JM-30APMII	JM-37APMII	JM-45APMII	JM-55APMII	JM-75APMII	JM-90APMII	
排气量/排气压力 Capacity/Pressure (m³/min/Mpa)	1.00/2.0	---/2.0	---/2.0	3.40/2.0	---/2.0	5.10/2.0	6.50/2.0	9.00/2.0	11.00/2.0	
	---/2.2	---/2.2	2.40/2.2	---/2.2	---/2.2	5.00/2.2	6.20/2.2	7.70/2.2	10.00/2.2	
	0.90/2.5	---/2.5	2.00/2.5	3.00/2.5	---/2.5	4.90/2.5	6.00/2.5	7.00/2.5	9.10/2.5	
	---/3.0	1.00/3.0	---/3.0	2.20/3.0	3.30/3.0	---/3.0	4.60/3.0	6.60/3.0	7.50/3.0	
电动机 Motor	功率Power(KW)	11	15	22	30	37	45	55	75	90
	马力Power(HP)	15	20	30	40	50	60	75	100	120
	电压/频率Hz	380V/3Ph/50Hz,特殊电压可定制, Special voltage can be customized								
启动方式Start	变频启动 VSD Start									
噪音 Noise DB (A)	72±2	72±2	72±2	72±2	72±2	72±2	75±2	75±2	75±2	
使用环境温度(°C) Ambient Temp	-5 ~ +45									
排气温度(°C) Discharge Air Temp	≤ 环境温度+15 °C ≤ Ambient temperature +15 °C									
外形尺寸 Size	长Length(mm)	1000	1000	1100	1100	1200	2100	2100	2100	2450
	宽Weight(mm)	750	750	850	850	1000	1440	1440	1440	1700
	高Height(mm)	1070	1070	1110	1110	1350	1650	1650	1650	1760
出口管径Outlet (Inch)	G3/4"	G3/4"	G1"	G1"	G1 1/2"	G2"	G2"	G2"	DN65	
机组重量Weight(KG)	200	210	320	330	620	1400	1500	1600	2400	

型号Model	JM-110APMII	JM-132APMII	JM-160APMII	JM-185APMII	JM-200APMII	JM-220APMII	JM-250APMII	JM-315APMII	JM-355APMII	
排气量/排气压力 Capacity/Pressure (m³/min/Mpa)	12.50/2.0	16.00/2.0	18.00/2.0	23.00/2.0	25.50/2.0	28.00/2.0	31.00/2.0	---/2.0	---/2.0	
	12.00/2.2	15.00/2.2	17.40/2.2	21.50/2.2	24.50/2.2	26.00/2.2	29.00/2.2	34.00/2.2	---/2.2	
	11.50/2.5	14.20/2.5	16.00/2.5	19.00/2.5	23.00/2.5	24.00/2.5	27.00/2.5	31.00/2.5	---/2.5	
	9.20/3.0	12.00/3.0	14.00/3.0	16.00/3.0	17.00/3.0	21.50/3.0	24.00/3.0	28.00/3.0	33.50/3.0	
电动机 Motor	功率Power(KW)	110	132	160	185	200	220	250	315	355
	马力Power(HP)	150	175	215	250	270	300	350	420	475
	电压/频率Hz	380V/3Ph/50Hz,特殊电压可定制, Special voltage can be customized								
启动方式Start	变频启动 VSD Start									
噪音 Noise DB (A)	80±2	80±2	80±2	82±2	82±2	82±2	84±2	84±2	84±2	
使用环境温度(°C) Ambient Temp	-5°C ~ +45°C									
排气温度(°C) Discharge Air Temp	≤ 环境温度+15 °C ≤ Ambient temperature +15 °C									
外形尺寸 Size	长Length(mm)	2600	2600	3250	3250	3250	3800	3800	4000	4300
	宽Weight(mm)	1900	1900	2100	2100	2100	2300	2300	2300	2300
	高Height(mm)	1890	1890	2200	2200	2200	2200	2200	2430	2430
出口管径Outlet (Inch)	DN80	DN80	DN80	DN80	DN80	DN100	DN80	DN80	DN80	
机组重量Weight(KG)	2800	3000	4300	4400	4600	6500	7000	8500	9000	

一体式永磁变频螺杆空压机 (7.5-37KW)  
Integrated PM Screw Air Compressor (7.5-37KW)



产品特点 Product Feature

- 电机功率 Motor Power :7.5-37 KW
- 排气量 Discharge delivery: 0.70-6.80 m3/min
- 排气压力 Discharge Pressure: 0.7-1.3 Mpa

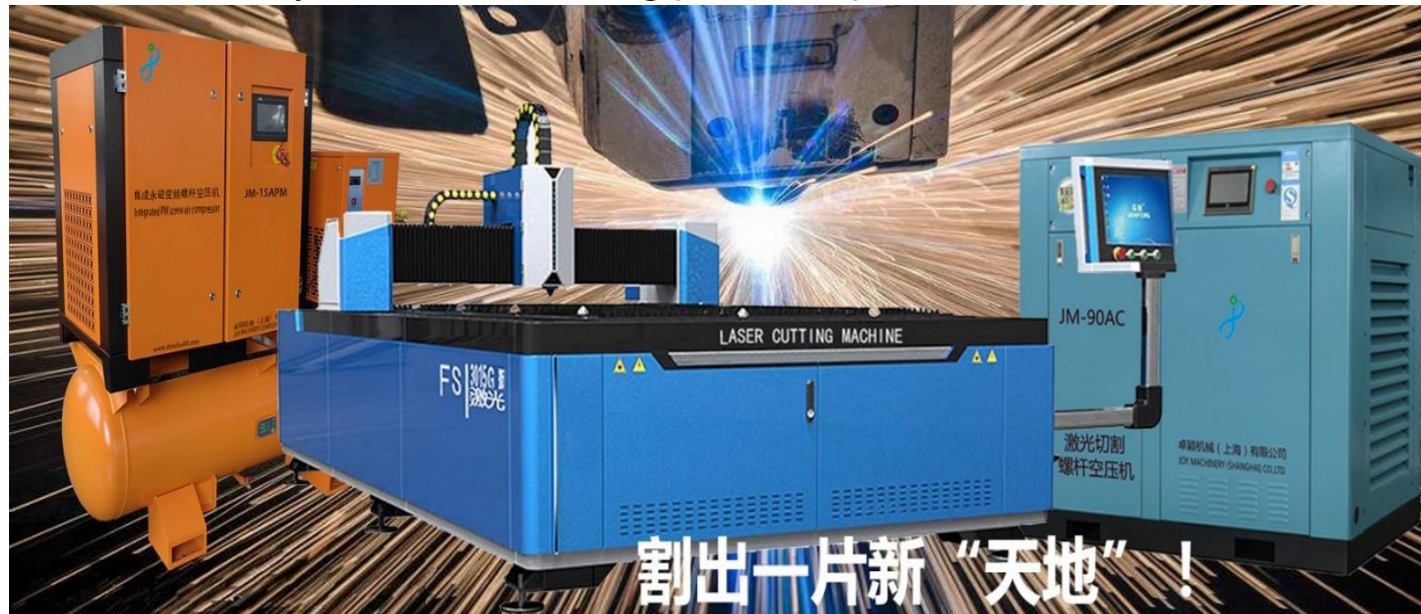
电机+主机 一体式 Motor+ Air end combination

电机+主机 分体式 Motor + Air end coupling

型号Model	JMI-7.5APM	JMI-15APM	JMI-22APM	JMI-37APM	
排气量/排气压力 Capacity/Pressure (m³/min/Mpa)	1.20/0.7	2.50/0.7	3.90/0.7	6.80/0.7	
	1.10/0.8	2.30/0.8	3.60/0.8	6.50/0.8	
	0.90/1.0	2.10/1.0	3.10/1.0	5.60/1.0	
	0.70/1.3	1.60/1.3	2.70/1.3	4.70/1.3	
电动机 Motor	功率Power(KW)	7.5	15	22	
	马力Power(HP)	10	20	30	50
	电压V/频率Hz	380V/3Ph/50Hz, 特殊电压可定制, Special voltage can be customized			
	启动方式Start	变频启动 VSD Start			
噪音 Noise DB (A)	70±2	70±2	72±2	72±2	
使用环境温度(°C) Ambient Temp	-5°C ~ +45°C				
排气温度(°C) Discharge Air Temp	≤ 环境温度+15 °C ≤ Ambient temperature +15 °C				
外形尺寸 Size	长Length(mm)	1650	1840	1875	
	宽Weight(mm)	695	800	850	
	高Height(mm)	1495	1740	1785	
出口管径Outlet (Inch)	G1/2	G3/4	G1	G1 1/2	
机组重量Weight(KG)	180	320	420	600	

型号Model	JMI-7.5APM	JMI-15APM	JMI-22APM	
排气量/排气压力 Capacity/Pressure (m³/min/Mpa)	1.20/0.7	2.50/0.7	3.90/0.7	
	1.10/0.8	2.30/0.8	3.60/0.8	
	0.90/1.0	2.10/1.0	3.10/1.0	
	0.70/1.3	1.60/1.3	2.70/1.3	
电动机 Motor	功率Power(KW)	7.5	15	
	马力Power(HP)	10	20	30
	电压V/频率Hz	380V/3Ph/50Hz, 特殊电压可定制, Special voltage can be customized		
	启动方式Start	变频启动 VSD Start		
噪音 Noise DB (A)	70±2	70±2	72±2	
使用环境温度(°C) Ambient Temp	-5°C ~ +45°C			
排气温度(°C) Discharge Air Temp	≤ 环境温度+15 °C ≤ Ambient temperature +15 °C			
外形尺寸 Size	长Length(mm)	1848	1848	
	宽Weight(mm)	768	808	
	高Height(mm)	1615	1715	
出口管径Outlet (Inch)	G1/2	G3/4	G1	
机组重量Weight(KG)	180	320	420	

激光切割专用---永磁变频螺杆空压机 (7.5-160KW)  
PM Screw Air Compressor for laser cutting (7.5-160KW)



割出一片新“天地”!

激光切割专用---一体式永磁变频螺杆空压机  
Integrated PM Screw Air Compressor for laser cutting

产品特点 Product Feature

- 电机功率 Motor Power :7.5-160 KW
- 排气量 Discharge delivery: 0.60-22.00 m3/min
- 排气压力 Discharge Pressure: 1.55-2.0 Mpa

型号Model	JMI-7.5APM	JMI-11APM	JMI-15APM	JMI-22APM	JMI-30APM	JMI-37APM	JMI-45APM	
排气量/排气压力 Capacity/Pressure (m³/min/Mpa)	0.60/1.55	0.90/1.6	1.20/1.6	2.00/1.6	2.50/1.6	3.50/1.6	4.30/1.6	
	---/2.0	---/2.0	1.00/2.0	1.70/2.0	2.20/2.0	3.20/2.0	3.80/2.0	
电动机 Motor	功率 (KW)	7.5	11	15	22	30	45	
	马力 (HP)	10	15	20	30	40	60	
	电压V/频率Hz	380V/3Ph/50Hz, 特殊电压可定制, Special voltage can be customized						
	启动方式Start	变频启动 VSD Start						
噪音Noise DB (A)	70±2	70±2	70±2	72±2	72±2	75±2	75±2	
使用环境温度(°C) Working Temp	-5°C ~ +45°C							
排气温度(°C) Discharge Air Temp	≤ 环境温度+15 °C ≤ Ambient temperature +15 °C							
外形尺寸 Size	长Length(mm)	1500	1800	1800	1800	1800	1990	
	宽Weight(mm)	670	750	750	850	850	980	
	高Height(mm)	1430	1770	1770	1930	1930	1970	
出口管径Outlet (Inch)	G1/2"	G3/4"	G3/4"	G1"	G1"	G2 1/2"	G2 1/2"	
机组重量Weight(KG)	355	570	590	690	720	930	980	

激光切割专用---单机永磁变频螺杆空压机 PM Screw Air Compressor for laser cutting

型号Model	JM-7.5APM	JM-11APM	JM-15APM	JM-22APM	JM-30APM	JM-37APM	JM-45APM	JM-55APM	JM-75APM	JM-90APM	JM-110APM	
排气量/排气压力 Capacity/Pressure (m³/min/Mpa)	0.60/1.55	0.90/1.6	1.20/1.6	2.00/1.6	2.50/1.6	3.40/1.6	4.30/1.6	5.90/1.6	8.10/1.6	9.50/1.6	13.00/1.6	
	---/2.0	---/2.0	1.00/2.0	1.70/2.0	2.20/2.0	3.20/2.0	3.80/2.0	4.20/2.0	6.50/2.0	8.50/2.0	9.80/2.0	
电动机 Motor	功率 (KW)	7.5	11	15	22	30	37	45	55	75	110	
	马力 (HP)	10	15	20	30	40	50	60	75	100	150	
	电压V/频率Hz	380V/3Ph/50Hz, 特殊电压可定制, Special voltage can be customized										
	启动方式Start	变频启动 VSD Start										
噪音Noise DB (A)	70±2	70±2	70±2	72±2	72±2	72±2	72±2	72±2	75±2	75±2	75±2	
使用环境温度(°C) Working Temp	-5°C ~ +45°C											
排气温度(°C) Discharge Air Temp	≤ 环境温度+15 °C ≤ Ambient temperature +15 °C											
外形尺寸 Size	长Length(mm)	800	1000	1000	1070	1070	1200	1200	1700	1700	1700	
	宽Weight(mm)	650	750	750	850	850	1000	1000	1210	1210	1210	
	高Height(mm)	860	1000	1000	1140	1140	1390	1390	1550	1550	1550	
出口管径Outlet (Inch)	G1/2"	G3/4"	G3/4"	G1"	G1"	G1 1/2"	G1 1/2"	G2 1/2"	G2 1/2"	G2 1/2"	DN65	
机组重量Weight(KG)	180	300	320	420	450	600	650	900	1050	1200	2500	

激光切割专用---单机双级压缩永磁变频螺杆空压机 Double stage PM Screw Air Compressor for laser cutting

型号Model	JM-37APMII	JM-45APMII	JM-55APMII	JM-75APMII	JM-90APMII	JM-110APMII	JM-132APMII	JM-160APMII	
排气量/排气压力 Capacity/Pressure (m³/min/Mpa)	3.60/1.6	5.30/1.6	6.50/1.6	9.00/1.6	11.20/1.6	15.00/1.6	18.50/1.6	22.00/1.6	
	---/2.0	---/2.0	---/2.0	---/2.0	---/2.0	---/2.0	---/2.0	---/2.0	
电动机 Motor	功率 (KW)	37	45	55	75	90	110	132	
	马力 (HP)	50	60	75	100	120	150	180	
	电压V/频率Hz	380V/3Ph/50Hz, 特殊电压可定制, Special voltage can be customized							
	启动方式Start	变频启动 VSD Start							
噪音Noise DB (A)	72±2	72±2	72±2	75±2	75±2	75±2	80±2	80±2	
使用环境温度(°C) Working Temp	-5°C ~ +45°C								
排气温度(°C) Discharge Air Temp	≤ 环境温度+15 °C ≤ Ambient temperature +15 °C								
外形尺寸 Size	长Length(mm)	1400	2100	2100	2100	2100	2600	3250	
	宽Weight(mm)	1100	1440	1440	1440	1440	1900	2100	
	高Height(mm)	1450	1650	1650	1650	1650	1890	2200	
出口管径Outlet (Inch)	G1 1/2"	G2 1/2"	G2 1/2"	G2 1/2"	G2 1/2"	G2 1/2"	DN50	DN80	
机组重量Weight(KG)	700	1600	1650	1650	1700	2700	2900	4000	



# 卓颖水润滑无油螺杆压缩机技术优势

## JOY MACHINERY water lubricated oil-free screw air compressors

### TECHNICAL ADVANTAGE

3.更少的维护耗材（空滤，水过滤），维护简便，  
无需专业人员操作，更低的使用成本  
Less maintenance consumables (air filter, water filter), easy maintenance,  
no need for professional personnel to operate, lower usage costs

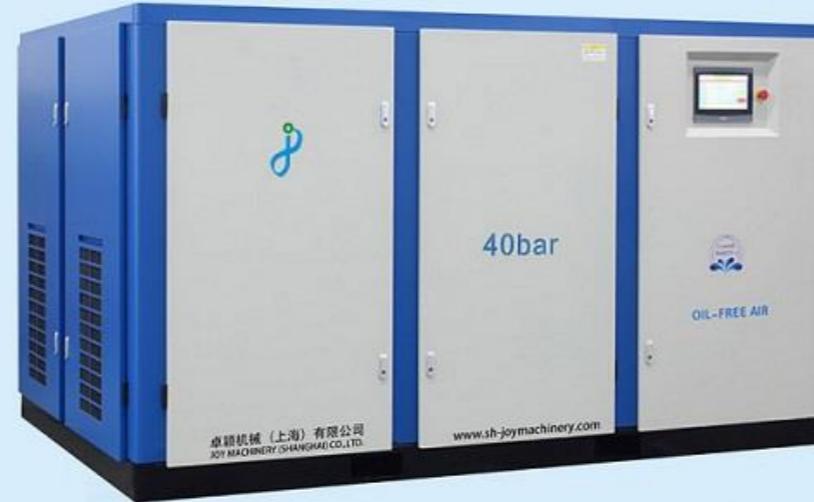
2.紧凑型设计，没有繁杂的管路和线路，故障点更少，系统更稳定  
Compact design, no complicated pipelines and wires, fewer fault points, and more stable system

1.采用新一代无油螺杆主机，压缩机主机及管路系统采用不锈钢合金，  
实现了从铜主机到不锈钢主机的技术超越  
Adopting a new generation oil-free screw air end, air end and pipeline system  
are made of stainless steel alloy, Achieved technological advancement  
from copper air end to stainless steel air end

13.高寒、高原地带机型可定做，可选配智能辅热系统  
Models for high-altitude and high-altitude areas can be customized,  
with optional intelligent auxiliary heating systems

12.可实现定期自动换水和自动系统清洗功能，压缩机内部更加整洁、卫生  
It can achieve regular automatic water change and automatic system cleaning functions,  
making the interior of the compressor cleaner and more hygienic

11.大转子、低转速（3000 RPM以内），没有齿轮箱，寿命长，能效高  
Large rotor, low speed (within 3000 RPM), no gearbox, long lifespan, high energy efficiency



4.压缩机系统绝对无油，没有任何油污风险，是压缩空气无油的保证  
The compressor system is absolutely oil-free with no risk of oil pollution, ensuring that the compressed air is oil-free

5.等温压缩，容积效率更高。相比干式无油双级压缩空压机，  
平均节能在10%以上。相比其一级压缩节能达20%以上，运行温度小于50℃。  
Isothermal compression results in higher volumetric efficiency.  
Compared to dry oil-free two-stage compression air compressors,  
the average energy savings are over 10%. Compared to its first stage compression,  
it saves more than 20% energy and operates at temperatures below 50 °C.

6.更宽的压力范围：2 bar~40 bar  
Wider pressure range: 2 bar~40 bar

7.全数控智能精密加工，产品一致性高。确保主机运行平稳，  
噪音低，更小震动，使用寿命长  
Fully CNC intelligent precision machining, high product consistency.  
Ensure smooth operation, low noise, minimal vibration,  
and long service life of the host

8.操作简单方便。采用PLC智能控制，具有自动故障检测，故障预警、  
保养提醒、故障提醒，可实现24小时无人值守，可实现远程控制功能  
Easy and convenient operation. Adopting PLC intelligent control, automatic fault detection,  
fault warning, maintenance and fault reminder, it can achieve 24-hour unmanned operation  
and remote control function

9.压缩空气经过润滑水的清洗，更加洁净，可以直接用于呼吸使用，饱和压缩空气的露点更低，  
压缩空气的含水量比干式无油螺杆机平均低25%以上  
Compressed air after being cleaned with lubricating water is cleaner and can be directly used for breathing.  
The dew point of saturated compressed air is lower, and the water content of compressed air is on average 25% lower  
than that of dry oil-free screw machines



## 无油水润滑螺杆空压机 (5.5-460KW)

### Oil-free Water Lubricated Screw Air Compressor (5.5-460KW)

我们生产的无油空压机符合国际标准压缩空气等级 ISO8573-1 CLASS 0 (2010)。

使用我们卓颖无油空压机, 可免除您在生产中的许多危险隐患: 没有油液的污染风险, 不会有损于您的生产, 不会由此产生不安全的产品, 无停机损失, 不会损害您的良好声誉。

使用我们的无油空气解决方案, 保护环境和遵守国际规则, 最大限度地减少泄漏和能源的浪费, 并消除凝结水。

Our oil-free air compressors are conformed to the latest industry standard of air purity: ISO 8573-1 CLASS 0 (2010).

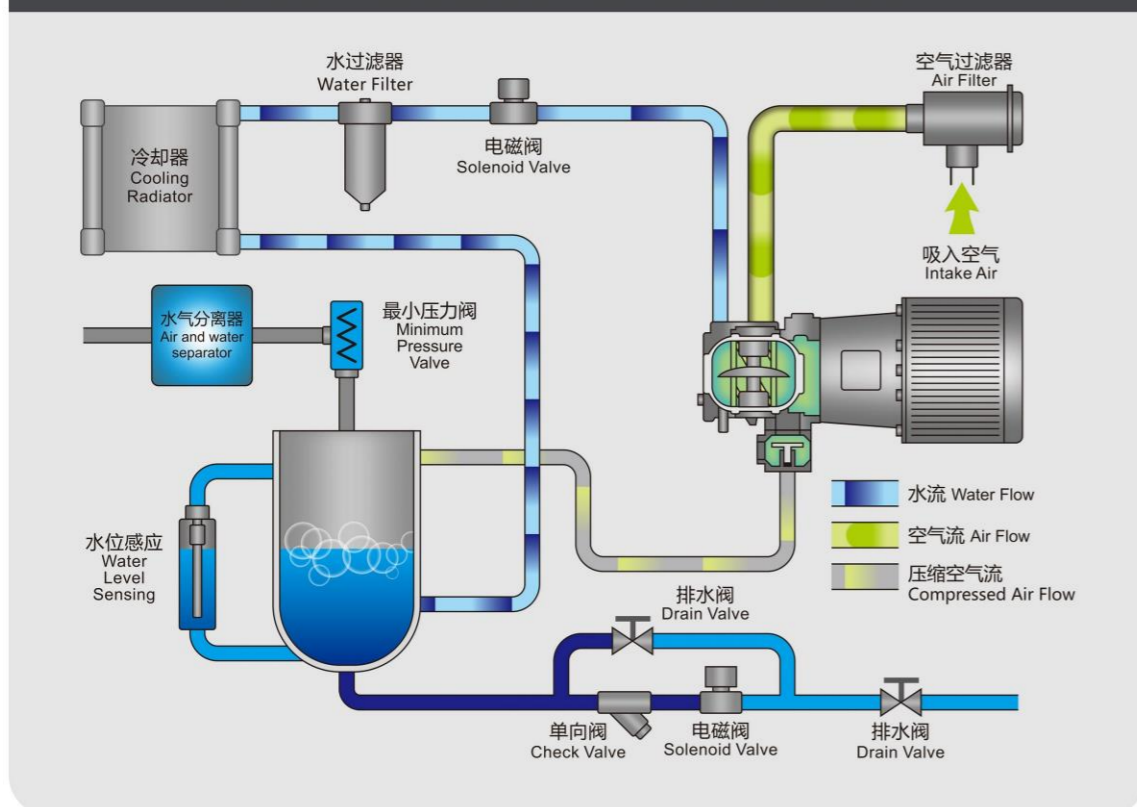
With JOY MACHINERY, you can eliminate so many risks: no risk of contamination of oil, of damaged or unsafe products, of losses from operational downtime or of jeopardizing your company's well-earned reputation. Safeguard the environment and comply with international regulations with our oil-free air solutions, minimizing leaks and energy waste.



1. 100%无油  
100% Oil-free
2. 低噪音, 无振动  
Low noise without vibration
3. 可选配变频系统  
Available for VSD control
4. 运行、维护成本低(耗材少: 水, 水滤芯, 空滤)  
Extremely low operation and maintenance costs (only covering water, water filter element and air filter element)

## 压缩机组系统流程图

### SYSTEM FLOW DIAGRAM OF COMPRESSOR UNIT



简单高效的机构, 让系统的稳定与节能成为可能。

Simple and efficient structure, so the stability and energy saving of the system is possible.

## 优异的性能, 源自全球顶尖的产品配置

### Excellent performance origins from the world's top configuration

The central image shows the 40bar compressor unit. Surrounding it are callouts to various components:

- 自主开发的智能化节能控制系统**  
Intelligent energy saving control system developed independently
- 丹麦Danfoss电磁阀**  
Denmark Danfoss solenoid valve
- 顶级西门子施耐德控制元器件**  
Top SIEMENS Schneider controls components
- 高性能电气元件**  
High-performance electrical components
- 高精度过滤器**  
High precision filter
- 消毒、杀菌、除水垢**  
Disinfection, sterilization and descaling
- 焊板式换热器**  
Welded plate heat exchanger
- 节能、省电**  
Energy saving and power saving
- 高效、高性能优异电机**  
High efficiency and high performance motor
- 德国Schaeffler轴承/瑞典SKF轴承**  
Germany Schaeffler bearing/swedish SKF bearing
- 丹麦Danfoss 冷却器**  
Denmark Danfoss cooler

### 工频水润滑无油螺杆空压机(5.5-55KW)

### Fixed Frequency Water Lubricated Oil-free Screw Air Compressor (5.5-55KW)



#### 产品特点 Product Feature

- 电机功率 Motor Power :5.5-55 KW
- 排气量 Discharge delivery: 0.65-10.30 m3/min
- 排气压力 Discharge Pressure: 0.8-1.25 Mpa

### 永磁变频水润滑无油螺杆空压机 (5.5-250KW)

### Permanent Magnet Water Lubricated Oil-free Screw Air Compressor (5.5-250KW)



#### 产品特点 Product Feature

- 电机功率 Motor Power :5.5-250 KW
- 排气量 Discharge delivery: 0.20-45.00 m3/min
- 排气压力 Discharge Pressure: 0.8-1.25 Mpa

#### 规格参数表 Technical Parameters

型号 Model	空气处理量 Air Capacity	排气压力 Pressure	电机功率 Power		噪音 Noise	冷却水口径 Cooling water outlet	冷却水口径 Cooling water	润滑水量 Lubricated water	外形尺寸 Dimension	出口 管径 Outlet	重量 Weight
	m3/min	Mpa	KW	HP	DB	Ton/Hour	L	长*宽*高 L*W*H	KG		
JMW-5.5A	0.78	0.8	5.5	7.5	57±2	3/4"	1.5	10	800*800*1200	3/4"	430
	0.65	1.0									
JMW-7.5A	1.17	0.8	7.5	10	57±2	3/4"	2.0	10	800*800*1200	3/4"	470
	1.05	1.0									
	0.81	1.25									
JMW-11A	1.72	0.8	11	15	60±2	1"	2.5	26	1200*855*1335	3/4"	580
	1.42	1.0									
	1.25	1.25									
JMW-15A	2.43	0.8	15	20	60±2	1"	3.5	26	1200*855*1335	14"	620
	2.17	1.0									
	1.80	1.25									
JMW-18.5A	3.13	0.8	18.5	25	63±2	1"	4.0	30	1400*1010*1340	1"	680
	2.82	1.0									
	2.05	1.25									
JMW-22A	3.70	0.8	22	30	63±2	1"	5.0	30	1400*1010*1340	1"	730
	3.21	1.0									
	2.78	1.25									
JMW-30A	5.20	0.8	30	40	66±2	1 1/2"	7.0	40	1650*1180*1505(A) 1500*1080*1300(W)	1 1/2"	1100
	4.43	1.0									
	3.63	1.25									
JMW-37A	6.50	0.8	37	50	66±2	1 1/2"	9.0	40	1650*1180*1505(A) 1500*1080*1505(W)	1 1/2"	1150
	5.33	1.0									
	4.77	1.25									
JMW-45A	8.30	0.8	45	60	68±2	1 1/2"	10.0	90	2050*1300*1758(A) 1800*1360*1670(W)	2"	1390
	6.30	1.0									
	5.56	1.25									
JMW-55A	10.30	0.8	55	75	69±2	1 1/2"	12.0	100	2150*1360*1758(A) 1800*1360*1670(W)	2"	1470
	8.55	1.0									
	7.67	1.25									

#### 规格参数表 Technical Parameters

型号 Model	空气处理量 Air Capacity	排气压力 Pressure	电机功率 Power		噪音 Noise	冷却水口径 Cooling water outlet	冷却水口径 Cooling water	润滑水量 Lubricated water	外形尺寸 Dimension	出口 管径 Outlet	重量 Weight
	m3/min	Mpa	KW	HP	DB	Ton/Hour	L	长*宽*高 L*W*H mm	KG		
JMW-5.5APM	0.30-0.78	0.8	5.5	7.5	57±2	3/4"	1.5	10	800*800*1200	3/4"	460
	0.20-0.65	1.0									
JMW-7.5APM	0.35-1.17	0.8	7.5	10	57±2	3/4"	2.0	10	800*800*1200	3/4"	510
	0.30-1.05	1.0									
	0.24-0.81	1.25									
JMW-11APM	0.51-1.72	0.8	11	15	60±2	1"	2.5	26	1200*855*1335	3/4"	620
	0.45-1.42	1.0									
	0.35-1.25	1.25									
JMW-15APM	0.75-2.43	0.8	15	20	60±2	1"	3.5	26	1200*855*1335	1"	670
	0.65-2.17	1.0									
	0.60-1.80	1.25									
JMW-18.5APM	0.90-3.13	0.8	18.5	25	62±2	1"	4.0	30	1400*1010*1340	1"	730
	0.90-2.82	1.0									
	0.60-2.05	1.25									
JMW-22APM	1.10-3.70	0.8	22	30	62±2	1"	5.0	30	1400*1010*1340	1"	780
	0.97-3.21	1.0									
	0.85-2.78	1.25									
JMW-30APM	1.55-5.20	0.8	30	40	65±2	1 1/2"	7.0	40	1650*1180*1505(A) 1500*1080*1300(W)	1 1/2"	1150
	1.23-4.43	1.0									
	1.10-3.63	1.25									
JMW-37APM	1.91-6.50	0.8	37	50	65±2	1 1/2"	9.0	40	1650*1180*1505(A) 1500*1080*1300(W)	1 1/2"	1200
	1.60-5.33	1.0									
	1.42-4.77	1.25									
JMW-45APM	2.50-8.30	0.8	45	60	68±2	1 1/2"	10.0	90	1800*1360*1670	2"	1490
	1.91-6.30	1.0									
	1.705-5.6	1.25									
JMW-55APM	3.00-10.30	0.8	55	75	70±2	1 1/2"	12.0	100	1800*1360*1670	2"	1570
	2.60-8.55	1.0									
	2.30-7.67	1.25									
JMW-75APM	3.95-13.00	0.8	75	100	70±2	1 1/2"	18.0	100	1800*1360*1670	2"	1750
	3.40-11.50	1.0									
	3.00-9.70	1.25									
JMW-90APM	5.00-16.60	0.8	90	120	70±2	1 1/2"	20.0	120	2200*1550*1800	2 1/2"	2450
	4.30-14.66	1.0									
	3.72-12.60	1.25									
JMW-110APM	6.00-20.20	0.8	110	150	75±2	2"	24.0	120	2200*1550*1800	2 1/2"	2580
	5.00-16.66	1.0									
	4.66-15.56	1.25									
JMW-132APM	6.75-22.52	0.8	132	180	75±2	2"	30.0	120	2200*1550*1800	2 1/2"	2700
	6.00-19.97	1.0									
	5.07-16.90	1.25									
JMW-160APM	8.50-28.11	0.8	160	220	80±2	3"	35.0	160	3000*1800*2100	3"	3900
	7.60-25.45	1.0									
	6.70-22.52	1.25									
JMW-185APM	10.00-33.97	0.8	185	250	80±2	3"	38.0	160	3000*1800*2100	3"	4050
	8.72-29.00	1.0									
	7.75-25.21	1.25									
JMW-200APM	11.20-36.75	0.8	200	270	80±2	4"	42.0	200	3100*1850*2100	4"	4200
	9.68-32.78	1.0									
	9.20-29.25	1.25									
JMW-220APM	12.20-39.67	0.8	220	300	80±2	4"	47.0	200	3100*1850*2100	4"	4400
	11.20-36.75	1.0									
	9.00-29.63	1.25									
JMW-250APM	13.50-45.00	0.8	250	340	80±2	4"	53.0	200	3100*1850*2100	4"	4800
	12.30-39.67	1.0									
	10.20-33.97	1.25									

### 低压无油螺杆

#### Low Pressure Oil-free Screw Air Compressor (30-185KW)

规格参数表 Technical Parameters											
型号 Model	空气处理量 Air Capacity	排气压力 Pressure	电机功率 Power		噪音 Noise	冷却水口径 Cooling water outlet	冷却水口径 Cooling water	润滑水量 Lubricated water	外形尺寸 Dimension	出口管径 Outlet	重量 Weight
	m <sup>3</sup> /min	Mpa	KW	HP	DB	Ton/Hour	L	长*宽*高 L*W*H		KG	
JMW-30A	6.70	0.4	30	40	65±2	1 1/2"	7	50	1650*1180*1505 (A) 1500*1080*1300 (W)	2"	1200
JMW-37A	8.60	0.4	37	50	65±2	1 1/2"	9	60	1650*1180*1505 (A) 1500*1080*1300 (W)	2 1/2"	1300
JMW-45W	10.50	0.4	45	60	68±2	1 1/2"	10	120	1800*1360*1670	2 1/2"	1500
JMW-55W	13.50	0.4	55	75	68±2	1 1/2"	12	160	1800*1360*1670	2 1/2"	1670
JMW-75W	19.90	0.4	75	100	70±2	1 1/2"	18	160	1800*1360*1670	3"	1800
JMW-90W	23.00	0.4	90	120	72±2	1 1/2"	20	180	2200*1550*1800	3"	2550
JMW-110W	28.20	0.4	110	150	75±2	2"	24	180	2200*1550*1800	4"	2600
JMW-132W	30.00	0.4	132	180	75±2	2"	30	180	2200*1550*1800	4"	2800
JMW-160W	36.00	0.4	160	220	78±2	3"	35	230	3000*1800*2100	5"	4000
JMW-185W	42.00	0.4	185	250	78±2	3"	38	230	3000*1800*2100	5"	4350

### 中压无油螺杆空压机

#### Middle Pressure Oil-free Screw Air Compressor (37-460KW)

规格参数表 Technical Parameters											
型号 Model	空气处理量 Air Capacity	排气压力 Pressure	电机功率 Power		噪音 Noise	冷却水口径 Cooling water outlet	冷却水口径 Cooling water	润滑水量 Lubricated water	外形尺寸 Dimension	出口管径 Outlet	重量 Weight
	m <sup>3</sup> /min	Mpa	KW	HP	DB	Ton/Hour	L	长*宽*高 L*W*H		KG	
JMW-37W	3.50	4.0	37	50	65±2	1"	10	80	1800*1360*1710	1"	1200
JMW-65W	6.00	4.0	65	90	70±2	1 1/2"	18	120	1800*1360*1710	1"	1800
JMW-110W	10.00	4.0	110	150	70±2	2"	28	160	3000*1560*1680	1 1/2"	2260
JMW-132W	12.00	4.0	132	175	72±2	2"	35	170	3000*1800*2100	1 1/2"	2500
JMW-165W	15.00	4.0	165	220	75±2	2 1/2"	40	190	3000*1800*2100	2"	2980
JMW-220W	20.00	4.0	220	300	75±2	3"	50	200	3000*2100*2200	2"	3200
JMW-275W	25.00	4.0	275	375	78±2	3"	56	250	3600*2100*2200	2 1/2"	4600
JMW-460W	42.00	4.0	460	615	80±2	4"	90	360	4200*3600*2200	3"	5800

### 特种工艺压缩机

#### Oil-free Screw Air Compressor for Special Purpose



特种、工艺气体压缩机特点:  
最新一代喷水无油螺杆机;  
接近等温压缩所具有的低温特性(主机温度小于60℃);  
全不锈钢主机(主机螺杆、主机壳体都是不锈钢材质)耐腐蚀特性;  
高效全密封系统(采用进口的机械密封及迷宫密封)不泄露的特性;  
主机内压缩腔运行不存在金属与金属之间的接触;  
采用纯净水密封、润滑、冷却,能更好的适应各种气体压缩的要求,尤其是需要防爆的要求场合;  
拥有自主知识产权,可根据客户要求订制压缩机,已成功开发:汽油气压缩机、沼气压缩机、氮气压缩机、氧气压缩机等特殊气体压缩机。

### Oil-free screw air compressor for special purpose

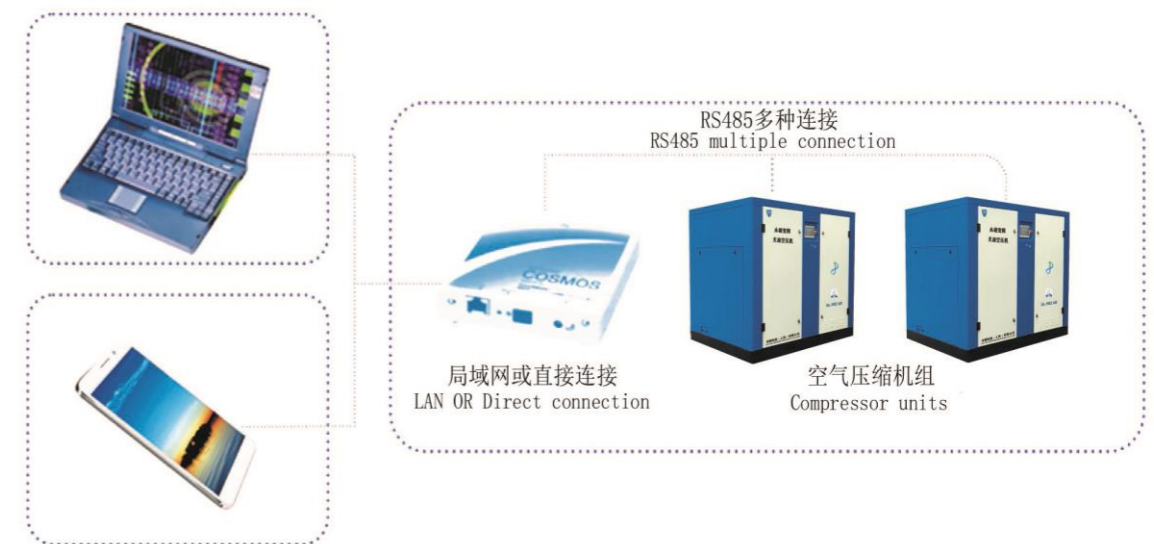
Characteristics of the latest generation of water lubricated oil-free screw air compressor  
Low temperature characteristics of close to isothermal compression (the temperature of air end is lower than 60℃);  
Full stainless steel air end (air end screw, air end casing are both stainless steel material) corrosion resistance characteristics;  
High efficiency full seal system (adopting imported mechanical seal, and labyrinth seal) without potential leakage;  
There is no direct contact between metals when the compressor air end runs;  
Adopting pure water to seal, lubricate, cool air end, which can adapt to the requirements of various gas compressors, especially for the requirements of explosive-proof gas compressor;  
With our own intellectual property rights, all kinds of gas compressors can be made according to the requirements of our customers;  
Totally stainless steel air end with independent patents;  
Achievements: Gasoline gas compressors, methane compressors, nitrogen compressors, oxygen compressors and other special gas compressors have been successfully developed and applied.

#### 无油水润滑螺杆空压机安装示意图(水冷式)

#### Oil free water lubricated screw air compressor installation scheme (water cooled)



### 远程控制系统 Remote control system





## 干式无油螺杆空压机(5.5-250KW) Dry Oil-free Screw Air Compressor (5.5-250KW)

### 主要部件 Main components



#### 主机可选: GHH 或者国内

压缩腔与油腔完全分离, 两者不接触。

二级转子采用不锈钢材质, 更可靠。

在主机的转子和压缩腔内壁涂了业内一流的超级涂层 (UITRACOAT)。能有效防止特氟隆等一般涂层容易发生的软化、脱落等现象。具有优秀的防腐和减少啮合间隙的作用。

#### Optional: Industry leading GHH oil-free air end / domestic air end

The air compression chamber and the oil chamber are completely separated and do not come into contact with each other.

The rotors are made of stainless steel material, which is more reliable.

The rotor and compression chamber walls of the air end is coated with industry-leading super coating (UITRACOAT). It can effectively prevent from softening, peeling and other phenomena that are prone to occur when using general coatings such as Teflon. excellent anti-corrosion properties and reduces meshing gaps.



#### 永磁变频电控系统

大尺寸彩色液晶触摸屏, 拥有良好人机交流界面; 定制矢量变频器, 与电机完美匹配; 专用程序, 完全监控机器的各项参数, 自动控制机器状态, 无需专人看管; 独立风道设计, 适用各种工况。

#### Permanent magnet variable frequency control system

Large size color LCD touch screen with excellent human-machine communication interface;

Customized vector frequency converter, perfectly matched with the motor;

A dedicated program that fully monitors the various parameters of the machine, automatically controls the machine status, and does not require dedicated supervision;

Independent air duct design, suitable for various working conditions.



#### 独立进风系统

独立进风, 保证进气温度等同于环境温度。选用大余量空滤, 过滤效果更好, 进气压损更低, 节能高效。保养更换更加方便。

#### Independent air intake system

Independent air intake ensures that the intake temperature is equal to the ambient temperature.

Choosing a large surplus air filter results in better filtration efficiency, lower intake pressure loss, and energy efficiency.

Maintenance and replacement are more convenient.

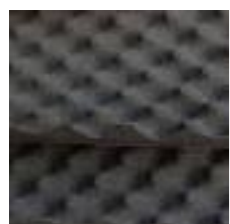


#### 降噪钣金设计

多重降噪设计, 根据噪声学进行计算, 内部贴专用阻燃消音棉, 降低机组噪音, 提供更加安静的使用环境。

#### Noise reduction sheet metal design

Multiple noise reduction design, calculated based on noise theory, with dedicated flame-retardant sound-absorbing cotton pasted inside to reduce unit noise and provide a quieter usage environment.



#### 静音离心风机

干式螺杆空压机采用最新型离心风机, 冷却风量大, 噪音低, 风压平稳, 均匀, 使冷却器散热面积得到充分利用, 并大幅降低空压机噪音。

#### Silent centrifugal fan

The dry oil-free screw air compressor adopts the latest centrifugal fan with large cooling air volume, low noise, stable and uniform air pressure, which fully utilizes the cooling area of the cooler and significantly reduces the noise level.



#### 高效水冷却器

管巢为新型梅花型铜管, 较常规的水冷换热器而言, 优点如下:

冷却水走壳程, 经过多组折流部件, 其紊流程度提高, 附着管壁的污垢形成概率减小, 降低用户的维护成本;

气体走管程且翅片在管内沿轴向延伸, 使用安全可靠, 翅片不易脱落;

管巢可独立拆卸, 方便用户维护保养;

压缩空气走管程, 水走壳程, 降低压缩空气所产生的噪音。

#### Efficient water cooler

The tube nest is a new type of plum blossom shaped copper tube, which has the following advantages over conventional water-cooled heat exchangers:

The cooling water flows through the shell side and passes through multiple sets of baffle components, which increases the turbulence level and reduces the probability of dirt formation on the pipe wall, thereby reducing maintenance costs for users;

The gas flows through the tube and the fins extend axially inside the tube, making it safe and reliable to use, and the fins are not easily detached;

The tube nest can be independently disassembled, making it convenient for users to maintain and upkeep;

Compressed air flows through the pipe and water flows through the shell to reduce the noise generated by compressed air.



#### 降噪文丘里管

空压机一级主机、二级主机全部采用最新研发的文丘里管式消音器外, 还有阻抗一体式消音器, 能极大的消除压缩机管道所发出的噪音。

#### Noise reducing Venturi tube

The first and second stage engines of the air compressor are equipped with the latest developed Venturi tube muffler, as well as an impedance integrated muffler, which can greatly eliminate the noise emitted by the compressor pipeline.



#### 可靠的进气系统

高效进气阀, 工作更加稳定可靠, 避免了对于气动元件的定期替换, 降低了不必要的停机时间和维护保养费用。

#### Reliable intake system

Efficient intake valve ensures more stable and reliable operation, avoiding regular replacement of pneumatic components and reducing unnecessary downtime and maintenance costs.

## 工频干式无油螺杆空压机(37-315KW) Fixed Frequency Dry Oil-free Screw air compressor (37-315KW)

采用德国技术无油主机(国产主机可选), 是一款通过德国 TUV CLASS 0 无油认证的高环保、  
高效率的干式无油螺杆压缩机。

Adopting German technology (domestic airend optional), it is a highly environmentally friendly and energy-efficient  
dry oil-free screw compressor certified by TUV CLASS 0.



德国进口主机(国产主机可选)  
Imported air end from German  
China air end



全不锈钢设计  
Totally stainless steel design



德国莱茵 0 级无油认证  
TUV Rheinland Level 0 Oil Free  
Certification



高效气水分离  
Efficient gas water separation



永磁同步电机效率达到 IE5 级别  
YE5 high-efficiency motor



无气耗油雾分离  
Air consumption free oil mist separation



低压损大空滤设计  
Low pressure loss, large air filter design



静音离心风机设计 Design of  
Silent Centrifugal Fan



### 产品特点 Product Feature

- 电机功率 Motor Power :37-315 KW
- 排气量 Discharge delivery: 5.60-52.50 m3/min
- 排气压力 Discharge Pressure: 0.7-1.0 Mpa

### 规格参数表 Technical Parameters

型号Model	JMWD-37A	JMWD-45A	JMWD-55A	JMWD-75A	JMWD-90A	JMWD-110A	JMWD-132A	
排气量/排气压力 Capacity/Pressure (m³/min/Mpa)	'---/0.7	7.80/0.7	9.80/0.7	13.00/0.7	16.00/0.7	20.60/0.7	24.80/0.7	
	5.60/0.8	6.80/0.8	9.00/0.8	12.20/0.8	13.80/0.8	19.50/0.8	23.00/0.8	
	'---/1.0	6.40/1.0	7.80/1.0	11.20/1.0	13.10/1.0	18.80/1.0	19.50/1.0	
	---/1.3	---/1.3	---/1.3	---/1.3	---/1.3	---/1.3	---/1.3	
电动机 Motor	功率Power(KW)	37	45	55	75	90	132	
	马力Power(HP)	50	60	75	100	120	175	
	电压V/频率Hz	380V/3Ph/50Hz,特殊电压可定制, Special voltage can be customized						
	启动方式Start	Y-Δ启动 Y-Δ Start						
噪音 Noise DB (A)	72±2	72±2	72±2	75±2	75±2	75±2	80±2	
使用环境温度(℃) Ambient Temp	-5℃ ~ +45℃							
排气温度(℃) Discharge Air Temp	≤ 环境温度+15℃ ≤ Ambient temperature +15℃							
外形尺寸 Size	长Length(mm)	2000	2200	2000	2200	2000	2200	
	宽Weight(mm)	1300	1500	1300	1500	1400	1500	
	高Height(mm)	1820	1720	1820	1720	2000	1720	
出口管径Outlet (Inch)	G1 1/2"	G1 1/2"	G1 1/2"	DN50	DN50	DN65	DN65	
机组重量Weight(KG)	1800	1950	1800	1850	1900	1950	2000	
冷却方式 Cooled way	风冷 Air	水冷 Water	风冷 Air	水冷 Water	风冷 Air	水冷 Water	风冷 Air	

型号Model	JMWD-160A	JMWD-185A	JMWD-200A	JMWD-220A	JMWD-250A	JMWD-280A	JMWD-315A	
排气量/排气压力 Capacity/Pressure (m³/min/Mpa)	28.50/0.7	32.80/0.7	36.80/0.7	41.50/0.7	46.00/0.7	48.60/0.7	52.50/0.7	
	26.30/0.8	28.90/0.8	34.60/0.8	37.30/0.8	42.80/0.8	47.50/0.8	50.60/0.8	
	23.80/1.0	27.50/1.0	30.60/1.0	33.00/1.0	38.20/1.0	45.00/1.0	48.50/1.0	
	---/1.3	---/1.3	---/1.3	---/1.3	---/1.3	---/1.3	---/1.3	
电动机 Motor	功率Power(KW)	160	185	200	220	250	315	
	马力Power(HP)	215	250	270	300	350	420	
	电压V/频率Hz	380V/3Ph/50Hz,特殊电压可定制, Special voltage can be customized						
	启动方式Start	Y-Δ启动 Y-Δ Start						
噪音 Noise DB (A)	80±2	80±2	82±2	82±2	82±2	82±2	82±2	
使用环境温度(℃) Ambient Temp	-5℃ ~ +45℃							
排气温度(℃) Discharge Air Temp	≤ 环境温度+15℃ ≤ Ambient temperature +15℃							
外形尺寸 Size	长Length(mm)	3000	2800	3000	2800	4500	3100	
	宽Weight(mm)	1990	1900	1990	1900	2000	2200	
	高Height(mm)	2180	1990	2180	1990	2150	2105	
出口管径Outlet (Inch)	DN65	DN65	DN100	DN100	DN100	DN100	DN100	
机组重量Weight(KG)	3300	3400	3400	3500	5570	5000	5600	
冷却方式 Cooled way	风冷 Air	水冷 Water	风冷 Air	水冷 Water	风冷 Air	水冷 Water	风冷 Air	



## 变频干式无油螺杆空压机(37-315KW) PM Dry Oil-free Screw air compressor (37-315KW)

采用德国技术无油主机(国产主机可选), 是一款通过德国 TUV CLASS 0 无油认证的高环保、  
高效率的干式无油螺杆压缩机。

Adopting German technology (domestic airend optional), it is a highly environmentally friendly and energy-efficient  
dry oil-free screw compressor certified by TUV CLASS 0.



德国进口主机(国产主机可选)  
Imported air end from German  
China air end



全不锈钢设计  
Totally stainless steel design



德国莱茵 0 级无油认证  
TUV Rheinland Level 0 Oil Free  
Certification



高效气水分离  
Efficient gas water separation



永磁同步电机效率达到 IE5 级别  
YE5 high-efficiency motor



无气耗油雾分离  
Air consumption free oil mist separation



低压损大空滤设计  
Low pressure loss, large air filter design



静音离心风机设计 Design of  
Silent Centrifugal Fan



### 产品特点 Product Feature

- 电机功率 Motor Power :37-315 KW
- 排气量 Discharge delivery: 5.60-52.50 m3/min
- 排气压力 Discharge Pressure: 0.7-1.0 Mpa

规格参数表 Technical Parameters		卓颖机械(上海)有限公司 JOY MACHINERY (SHANGHAI) CO.,LTD.													
型号Model		JMWD-37APM	JMWD-45APM	JMWD-55APM	JMWD-75APM	JMWD-90APM	JMWD-110APM	JMWD-132APM							
排气量/排气压力 Capacity/Pressure (m3/min/Mpa)	'---/0.7	4.50-7.80/0.7	5.70-9.80/0.7	7.60-13.00/0.7	9.60-16.00/0.7	12.10-20.60/0.7	14.70-24.80/0.7								
	3.60-5.60/0.8	4.00-6.80/0.8	5.20-9.00/0.8	7.20-12.20/0.8	8.10-13.80/0.8	11.60-19.50/0.8	13.60-23.00/0.8								
	'---/1.0	3.70-6.40/1.0	4.40-7.80/1.0	6.60-11.20/1.0	7.60-13.10/1.0	11.10-18.80/1.0	11.50-19.50/1.0								
	--/1.3	--/1.3	--/1.3	--/1.3	--/1.3	--/1.3	--/1.3								
电动机 Motor	功率(KW)	37	45	55	75	90	110	132							
	马力(HP)	50	60	75	100	120	150	175							
	电压V/频率Hz	380V/3Ph/50Hz,特殊电压可定制, Special voltage can be customized													
	启动方式Start	变频启动 VSD Start													
噪音Noise DB (A)		70±2	70±2	70±2	75±2	75±2	75±2	80±2							
使用环境温度(°C) Working Temp		-5°C ~ +45°C													
排气温度(°C) Discharge Air Temp		≤ 环境温度+15°C ≤ Ambient temperature +15°C													
外形尺寸 Size	长Length(mm)	2000	2200	2000	2200	2000	2200	2200	2200	2200	2200	3000	2800	3000	2800
	宽Weight(mm)	1300	1500	1300	1500	1300	1500	1400	1500	1400	1500	1990	1900	1990	1900
	高Height(mm)	1820	1720	1820	1720	1820	1720	2000	1720	2000	1720	2180	1990	2180	1990
出口管径Outlet (Inch)		G1 1/2"		G1 1/2"		G1 1/2"		DN50		DN50		DN65		DN65	
机组重量Weight(KG)		1800	1950	1800	1850	1900	1950	2000	2050	2100	2150	3100	3150	3200	3250
冷却方式 Cooled way		风冷 Air	水冷 Water	风冷 Air	水冷 Water	风冷 Air	水冷 Water	风冷 Air	水冷 Water	风冷 Air	水冷 Water	风冷 Air	水冷 Water	风冷 Air	水冷 Water

型号Model		JMWD-160APM	JMWD-185APM	JMWD-200APM	JMWD-220APM	JMWD-250APM	JMWD-280APM	JMWD-315APM							
排气量/排气压力 Capacity/Pressure (m3/min/Mpa)	16.90-28.50/0.7	19.50-32.80/0.7	21.80-36.80/0.7	24.90-41.50/0.7	27.30-46.00/0.7	31.60-48.60/0.7	34.10-52.50/0.7								
	15.60-26.30/0.8	17.10-28.90/0.8	20.40-34.60/0.8	22.40-37.30/0.8	25.30-42.80/0.8	30.90-47.50/0.8	32.90-50.60/0.8								
	14.10-23.80/1.0	16.30-27.50/1.0	18.10-30.60/1.0	19.80-33.00/1.0	22.70-38.20/1.0	29.30-45.00/1.0	31.50-48.50/1.0								
	--/1.3	--/1.3	--/1.3	--/1.3	--/1.3	--/1.3	--/1.3								
电动机 Motor	功率(KW)	160	185	200	220	250	280	315							
	马力(HP)	215	250	270	300	350	375	420							
	电压V/频率Hz	380V/3Ph/50Hz,特殊电压可定制, Special voltage can be customized													
	启动方式Start	变频启动 VSD Start													
噪音Noise DB (A)		80±2	80±2	82±2	82±2	82±2	82±2	82±2							
使用环境温度(°C) Working Temp		-5°C ~ +45°C													
排气温度(°C) Discharge Air Temp		≤ 环境温度+15°C ≤ Ambient temperature +15°C													
外形尺寸 Size	长Length(mm)	3000	2800	3000	2800	4500	3100	4500	3100	4500	3100	4500	3100	4500	3100
	宽Weight(mm)	1990	1900	1990	1900	2000	2200	2000	2200	2000	2200	2000	2200	2000	2200
	高Height(mm)	2180	1990	2180	1990	2150	2105	2150	2105	2150	2105	2150	2105	2150	2105
出口管径Outlet (Inch)		DN65		DN65		DN100		DN100		DN100		DN100		DN100	
机组重量Weight(KG)		3300	3400	3400	3500	5570	5000	5600	5100	5800	5200	5900	5300	6000	5400
冷却方式 Cooled way		风冷 Air	水冷 Water	风冷 Air	水冷 Water	风冷 Air	水冷 Water	风冷 Air	水冷 Water	风冷 Air	水冷 Water	风冷 Air	水冷 Water	风冷 Air	水冷 Water

## 柴油移动式空压机 (45-475KW)

### Diesel Portable Screw Air Compressor (45-475KW)



#### 产品特点 Product Features

采用直连的稳定设计, 使运转稳定、可靠, 无需专人守护, 噪音低。  
独立的油气冷却系统, 使主机运转温度更低。  
电动移动式螺杆空气压缩机, 广泛应用于重工业, 比如矿山、城建、道路建设、喷砂等, 且不易得到电源的地方。

Stable design with direct connection, the operation is stable and reliable with low noise,

No need for dedicated personnel to guard.

An independent oil and gas cooling system ensures lower operating temperatures for the main engine.

Electric mobile screw air compressors are widely used in heavy industries such as mining, urban construction, road construction, sandblasting, etc., and are easily accessible to power sources.

规格参数表 Technical Parameters							
型号 Model	功率 Power(KW/HP)	排气量 Capacity(m3/min)	排气压力 Pressure (Mpa)	接口尺寸 Outlet	外形尺寸 L*W*H (mm)	净重 Weight(KG)	备注 Note
JMCY-4/8	45/60	4	0.8	G1-1/4"	2300*1760*1900	820	2轮 2 wheels
JMCY-7/8	58/78	7	0.8	G1-1/4"	2900*1800*2100	960	
JMCY-10/8	70/92	10	0.8	G1-1/2"	2900*1800*2100	1250	
JMCY-12/8	92/123	12	0.8	G1-1/2"	2900*1850*2100	1300	
JMCY-10/10	92/123	10	1	G1-1/2"	2900*1850*2100	1300	
JMCY-15/8	110/150	15	0.8	G2"	2900*1850*2100	1500	
JMCY-10/13	118/157	10	1.3	G2"	2900*1850*2100	1600	
JMCY-13/10	118/157	13	1	G2"	2900*1850*2100	1600	
JMCY-17/8	132/180	17	0.8	G2"	2900*1850*2100	1760	
JMCY-13/13	132/180	13	1.3	G2"	2900*1850*2100	1700	
JMCY-15/13	140/187	15	1.3	G2"	2900*1850*2100	1700	
JMCY-22/8	160/215	22	0.8	G2"	3400*1880*2100	1700	
JMCY-20/13	194/259	20	1.3	G2"	3400*1880*2100	1900	
JMCY-26/8	194/259	26	0.8	G2"	3400*1880*2100	1900	
JMCY-30/8	210/280	30	0.8	G2"	3400*1880*2100	2100	
JMCY-13/17-II	150/200	13	1.7	G2"	3400*1860*2100	1960	
JMCY-18/17-II	194/259	18	1.7	G2"	3400*1860*2100	2200	
JMCY-10/20-II	132/160	10	2	G2"	3200*1860*2100	1850	
JMCY-27/20-II	295/393	27	2	G2"	3700*2100*2500	2600	
JMCY-31/20-II	350/467	31	2	G2"	3700*2100*2500	3500	
JMCY-21/21-II	239/319	21	2.1	G2"	3700*2100*2400	2600	
JMCY-15/25-II	239/319	15	2.5	G2"	3700*2100*2400	2600	
JMCY-20/25-III	264/352	20	2.5	G2"	3700*2100*2400	2600	
JMCY-33/25-III	410/547	33	2.5	G2"	4200*2200*2300	3500	
JMCY-35/30-II	475/633	35	3	G2"	4200*2200*2300	3500	
JMCY-32/45-III	475/633	32	4.5	G2"	4900*2300*2200	4800	

## 电动移动式空压机 (37-220KW)

### Electrical Portable Screw Air Compressor (37-220KW)

#### 产品特点 Product Features

采用直连的稳定设计, 使运转稳定、可靠, 无需专人守护, 噪音低。  
独立的油气冷却系统, 使主机运转温度更低。  
电动移动式螺杆空气压缩机, 广泛应用于重工业, 比如矿山、城建、道路建设、喷砂等, 且易得到电源的地方。



Stable design with direct connection, the operation is stable and reliable with low noise, No need for dedicated personnel to guard.  
An independent oil and gas cooling system ensures lower operating temperatures for the main engine.  
Electric mobile screw air compressors are widely used in heavy industries such as mining, urban construction, road construction, sandblasting, etc., and are easily accessible to power sources.

规格参数表 Technical Parameters							
型号 Model	功率 Power(KW/HP)	排气量 Capacity(m3/min)	排气压力 Pressure (Mpa)	接口尺寸 Outlet	外形尺寸 L*W*H (mm)	净重 Weight(KG)	备注 Note
JMDY-6/8	37/45	6	8	2-RP3/4	3069*1570*1395	1300	2轮 2 wheels
JMDY-7.5/8	45/60	7.5	8		3069*1570*1395	1400	
JMDY-10/8	55/75	10	8	RP1 1/4 2-RP3/4	3530*1980*1887	1700	
JMDY-7.5/13		7.5	13		3530*1980*1887	1700	
JMDY-14/7	75/100	14	7		3300*1980*1831	1900	
JMDY-13/8		13	8		3530*1980*1887	2000	
JMDY-10/13		10	13		3530*1980*1887	1950	
JMDY-16/8		16	8		3530*1980*1887	2500	
JMDY-13/14.5	90/125	13	14.5		3530*1980*1887	2400	
JMDY-20/8		20	8		2-RP2 2-RP3/4	3700*1980*1940	
JMDY-17/13	17	13	3700*1980*1940			2900	
JMDY-22/8	132/180	22	8			3700*1980*1940	
JMDY-17/14.5		17	14.5	3700*1980*1940	3100		
JMDY-21/13	160/220	21	13	1-RP2 2-RP1 1/4	3670*1820*2250	3900	
JMDY-26/8		26	8		3670*1820*2250	3900	
JMDY-18/17		18	17		3670*1820*2250	3800	
JMDY-30/8	185/250	30	8		3670*1820*2250	4300	
JMDY-26/13	220/300	26	13	1-RP2 1-RP1	4200*1950*2350	4900	

## 小型电动移动螺杆机 (2.2-7.5KW)

### Miniature Electrical portable screw air compressor (2.2-7.5KW)



#### 产品特点 Product Feature

- 电机功率 Motor Power :2.2-7.5 KW
- 排气量 Discharge delivery: 0.30-10.00 m3/min
- 排气压力 Discharge Pressure: 0.8-1.25 Mpa

采用优质主机、电机, 运行稳定, 故障率低  
自带储气罐, 机身带轮子, 移动使用方便, 可替代活塞机  
Using high-quality airend and motor, stable operation, low failure rate  
Equipped with a built-in air tank and wheels on the body, it is easy to move and use, and can replace piston engines

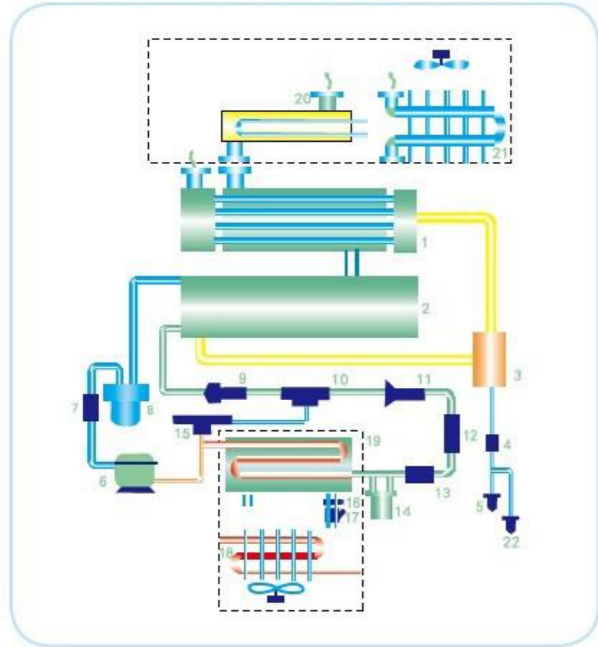
规格参数表 Technical Parameters														
型号 Model	功率 Power(KW/HP)	电压 Voltage(V/Hz)	排气量 Capacity(m3/m)	排气压力 Pressure (Mpa)	储气罐容积 Tank volume (L)	噪音 Noise level (Db)	冷却方式 Cooled way	外形尺寸 L*W*H						
JMDY-4/10D	2.2/4	220/50	0.3	0.8-1.0	90	78±2	风冷 Air cooled	940*365*940						
JMDY-4/10S		380/50												
JMDY-5.5/10D	4.5/6	220/50	0.55	0.8-1.0										
JMDY-5.5/10S		380/50												
JMDY-7.5/10S	5.5/7.5	380/50	0.7	0.8-1.0										
JMDY-10/10S		380/50							1.0	0.8-1.0				
JMDY-10/12.5S		380/50									0.8	1.1-1.25		
JMDY-10YPM/10S		380/50											1.0	0.8-1.0
JMDY-10YPM/10D		220/50												
JMDY-10YPM/12.5D	220/50	0.8	1.1-1.25											

## 压缩空气净化设备 Compressed air purification equipment

### 冷冻式冷干机 Refrigerated Air Dryer

#### 冷干机工艺流程

Process flow chat of refrigerated air dryer



- |              |                           |
|--------------|---------------------------|
| 1、空气热交换器     | Heat exchanger            |
| 2、蒸发器        | Evaporator                |
| 3、气液分离器      | Gas/liquid separator      |
| 4、排水防堵过滤器    | Jam-prevent drain filter  |
| 5、手动排污阀      | Manual draining valve     |
| 6、制冷压缩机      | Refrigerated compressor   |
| 7、吸气过滤器      | Aspirating filter         |
| 8、汽化器        | Vaporization              |
| 9、分液器        | Separator                 |
| 10、气液混合器     | Gas/liquid mixer          |
| 11、热力膨胀阀     | Thermal expansion valve   |
| 12、视镜        | View monitor              |
| 13、干燥过滤器     | Dry filter                |
| 14、储液器       | Tank                      |
| 15、热气旁通阀     | Hot gas by-pass valve     |
| 16、水量调节阀     | Water adjustable valve    |
| 17、水质过滤器     | Water filter              |
| 18、冷凝器(风冷)   | Condenser(Air-cooling)    |
| 19、冷凝器(水冷)   | Condenser(Water-cooling)  |
| 20、前置预冷器(水冷) | Per-cooler(Water-cooling) |
| 21、前置预冷器(风冷) | Per-cooler(Air-cooling)   |
| 22、自动排水器     | Auto-drainer              |

#### 使用工况 Standard Working Condition

冷却方式 Cooling Way	风冷 Air-cooled
处理量 Capacity	1.2-65 m3/min
功率 Power (KW)	0.85-13
进气温度 Inlet air temperature	≦45℃ (Standard type) ≦80℃ (High TEMP)
环境温度 Ambient temperature	≦45℃
压力露点 Pressure dew point	2-10℃
进气压力 Inlet air pressure	0.4-1.3 Mpa
压力降 Pressure drop	≦3% of the working pressure
制冷剂 Refrigerant	R22/R134A/R407C

冷冻空气干燥器降低压缩空气的温度, 迫使水分凝结。这是降低空气的露点。特别适用于无水或水资源短缺的地区。

我们的空气干燥器可以处理温度高达 80 度, 能与任何空气压缩机匹配工作。

A refrigerated air dryer lowers the temperature of the compressed air, forcing moisture to condense out. This is lowering the dew point of the air. Especially suitable for the areas free of water or short of water resources.

Our air dryer can handle temperatures up to 80℃ which will work well with any air compressor.

#### 使用工况 Standard Working Condition

冷却方式 Cooling Way	水冷 Water-cooled
处理量 Capacity	11-300 m3/min
功率 Power (KW)	2.5-60
进气温度 Inlet air temperature	≦45℃ (Standard type) ≦80℃ (High TEMP)
环境温度 Ambient temperature	≦45℃
压力露点 Pressure dew point	2-10℃
进气压力 Inlet air pressure	0.4-1.3 Mpa
压力降 Pressure drop	≦3% of the working pressure
制冷剂 Refrigerant	R22/R134A/R407C

冷冻空气干燥器降低压缩空气的温度, 迫使水分凝结。这是降低空气的露点。特别适用于水资源丰富的地区。

我们的空气干燥器可以处理温度高达 80 度, 能与任何空气压缩机匹配工作。

A refrigerated air dryer lowers the temperature of the compressed air, forcing moisture to condense out. This is lowering the dew point of the air. Especially suitable for the areas enough for water resources.

Our air dryer can handle temperatures up to 80℃ which will work well with any air compressor.

## 常温/高温风冷型冷干机

### Normal / High Temperature Air-cooling Refrigerated Air Dryer



#### 工况条件与技术参数 Working Condition and Technical Parameters

进气温度 Inlet temperature: ≦45℃ (≦80℃) 压力损失 Pressure drop: ≦0.03 Mpa  
冷却方式 Cooling method: 风冷 Air cooling 压力露点 Dew point: 2~10℃  
进气压力 Inlet pressure: 0.4~1.0Mpa 制冷剂 Refrigerant: R22

#### 规格参数表 Technical Parameters

型号 Model	JMAD-1N/HTA	JMAD-2N/HTA	JMAD-3N/HTA	JMAD-5N/HTA	JMAD-6N/HTA	JMAD-8N/HTA	JMAD-10HTA	JMAD-12HTA	JMAD-15HTA	JMAD-20HTA	JMAD-25HTA	JMAD-30HTA	JMAD-40HTA	JMAD-50HTA	JMAD-60HTA	JMAD-80HTA	JMAD-100HTA	
空气处理量 Air Capacity m³/min	1.5	2.5	3.5	5.5	6.5	8.5	11.5	13.5	16.5	22	27	35	45	55	65	85	110	
电源 Voltage/Hz	220V/1Ph/50Hz								380V/3Ph/50Hz									
压缩机(总)功率 Compressor Power	0.5	0.7	0.9	1.0	1.0	1.6	2.0	3.0	3.1	4.5	4.5	6.9	9.2	11	14	18	20	
风扇功率 Fan Power (W)	80	95	120	240	240	300	380	420	480	600	600	750	1080	2020	2020	1560	3330	
空气接管口径 Inlet/outlet Caliber	ZG1	ZG1	ZG1.5	ZG1.5	ZG1.5	ZG2	ZG2.5	ZG2.5	ZG2.5	DN80	DN80	DN100	DN100	DN125	DN125	DN150	DN150	
外形尺寸 Size	长 Length(mm)	665	750	800	923	923	995	1125	1125	1120	1300	1300	1600	1800	1900	1900	2500	2800
	宽 Width(mm)	425	420	440	500	500	585	625	625	700	750	750	820	820	900	900	1000	1000
	高 Height(mm)	560	730	800	910	910	1080	1045	1045	1230	1230	1230	1520	1560	1570	1570	1900	2100
设备重量 Weight(KG)	37	45	60	76	80	90	120	150	190	260	280	390	420	560	560	680	850	

## 常温/高温水冷型冷干机

### Normal / High Temperature Water-cooling Refrigerated Air Dryer



#### 工况条件与技术参数 Working Condition and Technical Parameters

进气温度 Inlet temperature: ≦45℃ (≦80℃) 压力损失 Pressure drop: ≦0.03 Mpa  
冷却方式 Cooling method: 水冷 Water cooling 压力露点 Dew point: 2~10℃  
进气压力 Inlet pressure: 0.4~1.0Mpa 制冷剂 Refrigerant: R22  
冷却水进口温度 Cooling water inlet temperature:

#### 规格参数表 Technical Parameters

型号 Model	JMAD-13N/HTW	JMAD-15N/HTW	JMAD-20N/HTW	JMAD-25N/HTW	JMAD-30N/HTW	JMAD-40N/HTW	JMAD-50N/HTW	JMAD-60N/HTW	JMAD-80N/HTW	JMAD-100N/HTW	JMAD-150N/HTW	JMAD-200N/HTW	JMAD-300N/HTW	
空气处理量 Air Capacity m³/min	13.5	16.5	22	25	35	45	55	65	85	110	160	210	300	
电源 V/φ/Hz	380V/3φ/50Hz													
压缩机(总)功率 Compressor Power	3.0	3.1	4.5	5.3	6.9	9.2	11.2	14	18	20	30	37	45	
冷却水循环量 Cooled water m³/h	5	6	7	9	11	15	20	22	25	30	40	50	80	
冷却水进出口口径 Cooled Water Pipe Caliber	DN20	DN25	DN25	DN32	DN32	DN45	DN45	DN45	DN50	DN50	DN65	DN80	DN100	
空气接管口径 Inlet/outlet Caliber	ZG2.5"	DN65	DN80	DN80	DN100	DN100	DN100	DN125	DN125	DN150	DN200	DN200	DN250	
外形尺寸 Size	长 Length(mm)	1125	1120	1300	1300	1600	1800	1900	1900	2500	2800	3300	3800	4000
	宽 Width(mm)	625	700	750	750	820	820	900	900	1000	1000	1750	1750	2000
	高 Height(mm)	1045	1230	1230	1230	1520	1560	1570	1570	1900	2100	2000	2000	2200
设备重量 Weight(KG)	160	210	280	300	410	450	530	590	730	900	1400	1700	2000	



### 无热再生吸附式冷干机

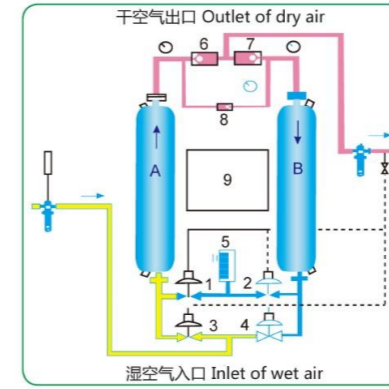
#### Heatless regenerative adsorption Air Dryer



#### 工况条件与技术参数

##### Working Condition and Technical Parameters

再生气量 Purge air:  $\leq 12\sim 15\%$   
工作压力 Working pressure:  $0.6\sim 1.0\text{Mpa}$   
进气含油量 Inlet oil content:  $\leq 0.01\text{ppm}$   
压力露点 Pressure dew point:  $-20\sim -40^\circ\text{C}$   
干燥剂 Desiccant: 活性氧化铝 Activated aluminum 或 or 分子筛 Molecular sieve  
工作周期 Working period:  $T=4\sim 20\text{ Minutes}$   
进气温度 Inlet temperature:  $0\sim 45^\circ\text{C}$



A、B 吸附塔 Absorption tower  
1、2、3、4 切换阀 Switch valve  
5、消声器 Silencer  
6、7 止回阀 Check valve  
8 节流阀 Throttle  
9 程序控制器 Program controller

规格参数表 Technical Parameters		卓颖机械(上海)有限公司 JOY MACHINERY (SHANGHAI) CO., LTD.																						
项目Item	型号Model	JMAD-1WXA	JMAD-2WXA	JMAD-3WXA	JMAD-6WXA	JMAD-8WXA	JMAD-10WXA	JMAD-12WXA	JMAD-15WXA	JMAD-20WXA	JMAD-25WXA	JMAD-30WXA	JMAD-40WXA	JMAD-50WXA	JMAD-60WXA	JMAD-80WXA	JMAD-100WXA	JMAD-120WXA	JMAD-150WXA	JMAD-200WXA	JMAD-250WXA	JMAD-300WXA	JMAD-350WXA	JMAD-400WXA
空气处理量 Air Capacity m <sup>3</sup> /min		1.5	2.5	3.8	6.8	8.5	11.5	13.5	17.0	23.0	27.0	34.0	45.0	55.0	65.0	87.0	110.0	130.0	160.0	210.0	260.0	310.0	360.0	410.0
空气接管口径 Inlet/outlet Caliber		ZG1"	ZG1"	ZG1"	ZG1 1/2"	ZG2"	ZG2"	ZG2"	DN65	DN65	DN80	DN80	DN100	DN100	DN100	DN125	DN150	DN150	DN200	DN200	DN250	DN250	DN300	DN300
外形尺寸 Size	长Length(mm)	750	750	1050	1050	1100	1100	1200	1200	1400	1400	1500	1700	1800	1900	2000	2200	2500	2600	2900	3000	3300	3700	4000
	宽Width(mm)	350	350	500	500	550	550	500	500	500	500	600	800	900	900	900	1000	1200	1500	1600	1800	2000	2100	2700
	高Height(mm)	1450	1600	1500	1850	1850	2000	2100	2300	2100	2450	2350	2400	2600	2700	2700	2800	2800	2850	2900	3000	3000	3000	3100
设备重量Weight(KG)		100	110	210	300	360	390	500	600	700	920	1050	1200	1500	1700	2200	2700	4100	4900	6400	7700	9020	11900	13100

### 微热再生吸附式冷干机

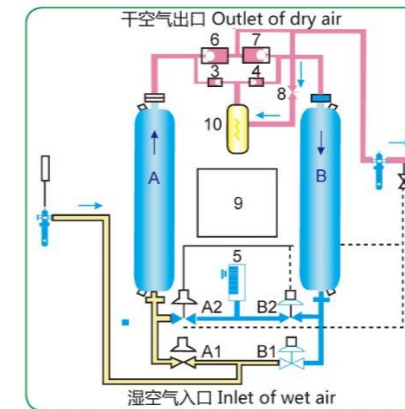
#### Heated regenerative adsorption Air Dryer



#### 工况条件与技术参数

##### Working Condition and Technical Parameters

再生气量 Purge air:  $\leq 4\sim 6\%$   
工作压力 Working pressure:  $0.6\sim 1.0\text{Mpa}$   
进气含油量 Inlet oil content:  $\leq 0.01\text{ppm}$   
压力露点 Pressure dew point:  $-20\sim -70^\circ\text{C}$   
干燥剂 Desiccant: 活性氧化铝 Activated aluminum 或 or 分子筛 Molecular sieve  
工作周期 Working period:  $T=60\sim 180\text{ Minutes}$   
进气温度 Inlet temperature:  $0\sim 45^\circ\text{C}$



A、B 吸附塔 Absorption tower  
A1、A2、B1、B2 切换阀 Switch valve  
5、消声器 Silencer  
3、4、6、7 止回阀 Check valve  
8 节流阀 Throttle  
9 程序控制器 Program controller  
10 电加热器 Heating element

规格参数表 Technical Parameters		卓颖机械(上海)有限公司 JOY MACHINERY (SHANGHAI) CO., LTD.																						
项目Item	型号Model	JMAD-1MXA	JMAD-2MXA	JMAD-3MXA	JMAD-6MXA	JMAD-8MXA	JMAD-10MXA	JMAD-12MXA	JMAD-15MXA	JMAD-20MXA	JMAD-25MXA	JMAD-30MXA	JMAD-40MXA	JMAD-50MXA	JMAD-60MXA	JMAD-80MXA	JMAD-100MXA	JMAD-120MXA	JMAD-150MXA	JMAD-200MXA	JMAD-250MXA	JMAD-300MXA	JMAD-350MXA	JMAD-400MXA
空气处理量 Air Capacity m <sup>3</sup> /min		1.5	2.5	3.8	6.8	8.5	11.5	13.5	17.0	23.0	27.0	34.0	45.0	55.0	65.0	87.0	110.0	130.0	160.0	210.0	260.0	310.0	360.0	410.0
空气接管口径 Inlet/outlet Caliber		ZG1"	ZG1"	ZG1"	ZG1 1/2"	ZG2"	ZG2"	ZG2"	DN65	DN65	DN80	DN80	DN100	DN100	DN100	DN125	DN150	DN150	DN200	DN200	DN250	DN250	DN300	DN300
加热功率 Heater power (KW)		0.5	1	1.2	2.1	3	4	4	5	6	8	10	12	15	18	27	36	42	54	72	90	113	124.8	145.8
外形尺寸 Size	长Length(mm)	750	750	1050	1050	1100	1100	1200	1200	1400	1400	1500	1700	1800	1900	2000	2200	2500	2600	2900	3000	3300	3700	4000
	宽Width(mm)	350	350	500	500	550	550	500	500	500	500	600	800	900	900	900	1000	1200	1500	1600	1800	2000	2100	2700
	高Height(mm)	1450	1600	1500	1850	1850	2000	2100	2300	2100	2450	2350	2400	2600	2700	2700	2800	2800	2850	2900	3000	3000	3000	3100
设备重量Weight(KG)		120	130	230	330	390	420	550	650	750	970	1150	1300	1600	1800	2350	2850	4300	5200	6700	8000	9270	12200	13400

### 组合式低露点冷干机 Combined Low Dew Point Air Dryer



**工况条件与技术参数 Working Condition and Technical Parameters**  
 进气压力 Inlet Pressure: 0.6~1.0 Mpa      空气进口温度 Inlet temperature: ≤45℃  
 压力露点 Dew point: -40~-70℃      再生气量 Purge air: 3~5%  
 冷却水温 Cooled water temperature: ≤32℃      压力损失 Pressure drop: ≤0.05 Mpa

规格参数表 Technical Parameters													
型号 Model 项 Item	JMAD-1AC	JMAD-3AC	JMAD-6AC	JMAD-8AC	JMAD-10AC	JMAD-12AC	JMAD-15AC	JMAD-20AC	JMAD-25AC	JMAD-30AC	JMAD-40AC	JMAD-50AC	JMAD-60AC
空气处理量 Air Capacity m³/min	1.6	3.8	6.8	8.5	11.5	13.5	17	23	27	34	45	55	67
电源V/Ph/Hz	220V/1Ph/50Hz						380V/3Ph/50Hz						
压缩机(总)功率 Compressor Power	0.6	1	2	2.5	3	3	3.5	4.2	5.3	6.7	8.3	10	13.3
风量(N.m³/h)	965	3110	6220	8470	8470	8470	8470	8470	10560	10560	15840	15840	18000
空气进出口径 Air Pipe Caliber	ZG1"	ZG1.5"	ZG1.5"	ZG2"	ZG2"	ZG2"	DN65	DN65	DN80	DN80	DN100	DN100	DN125
干燥机重量 Weight (KG)	25	56	126	155	220	238	275	395	490	600	845	1008	1170
外形尺寸 Size	长Length(mm)	1170	1250	1470	1500	1760	1760	1960	2030	2220	2340	2340	2520
	宽Width(mm)	880	885	1010	1060	1120	1180	1360	1440	1480	1640	1800	2000
	高Height(mm)	1408	1415	1789	2031	1864	1920	2204	2470	2470	2542	2961	2990
设备重Weight(KG)	305	510	775	920	1060	1190	1325	1740	2060	2375	2960	3320	3445

### 精密过滤器 Precision filter

型号 Model	空气流量 Flow Capacity		空气接管口径 Connection Caliber	外形尺寸 Dimension (mm)		滤芯 Filter	重量 Weight
	m³/min	CFM		长 Length	宽 Width		
JMAF-9/7/5/3/1-001	1.5	53	ZG1"	300	105	1	1.5
JMAF-9/7/5/3/1-002	2.6	92	ZG1"	300	105	1	1.7
JMAF-9/7/5/3/1-003	3.8	134	ZG1.5"	370	125	1	2.5
JMAF-9/7/5/3/1-006	6.8	240	ZG1.5"	500	125	1	3
JMAF-9/7/5/3/1-008	8.5	300	ZG2"	600	140	1	4.5
JMAF-9/7/5/3/1-010	11.5	406	ZG2"	600	140	1	5
JMAF-9/7/5/3/1-012	13.5	477	ZG2"	800	135	1	7.5
JMAF-9/7/5/3/1-015	17	600	DN65	1000	380	1	65
JMAF-9/7/5/3/1-020	23	812	DN80	1100	380	1	70
JMAF-9/7/5/3/1-025	27	953	DN80	1100	420	1	85
JMAF-9/7/5/3/1-030	34	1200	DN100	1100	440	2	90
JMAF-9/7/5/3/1-040	45	1589	DN100	1185	440	2	100
JMAF-9/7/5/3/1-050	55	1942	DN100	1185	517	3	105
JMAF-9/7/5/3/1-060	65	988.4	DN125	1335	517	3	120
JMAF-9/7/5/3/1-080	87	3071	DN150	1335	580	4	160
JMAF-9/7/5/3/1-100	110	3883	DN150	1410	600	5	200
JMAF-9/7/5/3/1-150	165	5825	DN200	1540	600	8	250
JMAF-9/7/5/3/1-200	210	7413	DN200	1568	750	10	300
JMAF-9/7/5/3/1-250	260	9178	DN250	1700	850	12	320
JMAF-9/7/5/3/1-300	320	11296	DN250	1700	850	14	350
JMAF-9/7/5/3/1-350	360	12708	DN300	1750	950	16	420
JMAF-9/7/5/3/1-400	410	14473	DN300	1750	950	19	435

### 精密过滤器 Precision filter

过滤等级 Filter class	过滤精度 Filter precision		残留油含量 Oil content
	μm	ppm	
9	3	5	
7	1	1	
5	0.01	0.01	
3	0.01	0.003	
1	0.01	0.001	



### 储气罐 Air Receiver (0.8-1.6 Mpa)

No.	规格 Model	设计温度 Design Temp	总高度 Total Height	内直径 Inner Diameter	空气进口 Air Inlet			空气出口 Air Outlet			支撑 Support		安全阀 Safety Valve	排污口 Drain Outlet	重量 Weight
					H2	DN	Thread	H3	DN	Thread	D	d			
1	0.3/0.8	110	1594	550	642			1242			400	20	Rp1/2	R1/2	121
2	0.3/1.0	110	1594	550	642	50	Rp1"	1242	50	Rp1"	400	20	Rp1/2	R1/2	139
3	0.3/1.3	110	1598	550	644	50	Rp1"	1244	50	Rp1"	400	20	Rp1/2	R1/2	167
4	0.3/1.6	110	1598	550	644	50	Rp1"	1244	50	Rp1"	400	20	Rp1/2	R1/2	195
5	0.6/0.8	110	1905	700	680			1550			490	24	Rp1/2	R1/2	185
6	0.6/1.0	110	1907	700	681	65	Rp1"	1551	65	Rp1"	490	24	Rp1/2	R1/2	217
7	0.6/1.3	110	1909	700	682	65	Rp1"	1552	65	Rp1"	490	24	Rp1/2	R1/2	265
8	0.6/1.6	110	1907	700	681	65	Rp1"	1551	65	Rp1"	490	24	Rp1/2	R1/2	313
9	1.0/0.8	110	2305	800	690			1920			560	24	Rp3/4	R1/2	283
10	1.0/1.0	110	2307	800	691	65	Rp1"	1921	65	Rp1"	560	24	Rp3/4	R1/2	324
11	1.0/1.3	110	2305	800	690	65	Rp1"	1920	65	Rp1"	560	24	Rp3/4	R1/2	331
12	1.0/1.6	110	2307	800	691	65	Rp1"	1921	65	Rp1"	560	24	Rp3/4	R1/2	338
13	1.5/0.8	110	2265	1000	760			1810			700	24	Rp3/4	R1/2	408
14	1.5/1.0	110	2265	1000	760	65	Rp2"	1810	65	Rp2"	700	24	Rp3/4	R1/2	473
15	1.5/1.3	110	2267	1000	761	65	Rp2"	1811	65	Rp2"	700	24	Rp3/4	R1/2	423
16	1.5/1.6	110	2566	1000	753	65	Rp2"	2118	65	Rp2"	700	24	Rp3/4	R1/2	488
17	2.0/0.8	110	2780	1000	760	80	Rp2"	2320	80	Rp2"	700	24	Rp1"	R1/2	513
18	2.0/1.0	110	2780	1000	760	80	Rp2"	2320	80	Rp2"	700	24	Rp1"	R1/2	661
19	2.0/1.3	110	2782	1000	761	80	Rp2"	2321	80	Rp2"	700	24	Rp1"	R1/2	538
20	2.0/1.6	110	2786	1000	763	80	Rp2"	2323	80	Rp2"	700	24	Rp1"	R1/2	686
21	2.5/0.8	110	3300	1000	760			2840			700	24	Rp1"	R1/2	642
22	2.5/1.0	110	3300	1000	760	80	Rp2"	2840	80	Rp2"	700	24	Rp1"	R1/2	724
23	2.5/1.3	110	3302	1000	761	80	Rp2"	2841	80	Rp2"	700	24	Rp1"	R1/2	773
24	2.5/1.6	110	2836	1000	788	80	Rp2"	2348	80	Rp2"	700	24	Rp1"	R1/2	855
25	3.0/0.8	110	2920	1200	850			2410			906	24	Rp1"	R3/4	735
26	3.0/1.0	110	2922	1200	851	80	Rp2"	2411	80	Rp2"	906	24	Rp1"	R3/4	917
27	3.0/1.3	110	2926	1200	853	80	Rp2"	2413	80	Rp2"	906	24	Rp1"	R3/4	855
28	3.0/1.6	110	2926	1200	853	80	Rp2"	2413	80	Rp2"	906	24	Rp1"	R3/4	1037
29	4.0/0.8	110	3030	1400	910			2470			1050	24	Rp1"	R3/4	949
30	4.0/1.0	110	3032	1400	911	100	Rp2"	2471	100	Rp2"	1050	24	Rp1"	R3/4	1170
31	4.0/1.3	110	3036	1400	913	100	Rp2"	2473	100	Rp2"	1050	24	Rp1"	R3/4	1019
32	4.0/1.6	110	3040	1400	915	100	Rp2"	2475	100	Rp2"	1050	24	Rp1"	R3/4	1240
33	5.0/0.8	110	3700	1400	910			2990			1050	24	Rp2	R3/4	1148
34	5.0/1.0	110	3702	1400	911	100	Rp2"	2991	100	Rp2"	1050	24	Rp2	R3/4	1419
35	5.0/1.3	110	3726	1400	913	100	Rp2"	3013	100	Rp2"	1050	24	Rp2	R3/4	1198
36	5.0/1.6	110	3730	1400	915	100	Rp2"	3015	100	Rp2"	1050	24	Rp2	R3/4	1469
37	6.0/0.8	110	4330	1400	910			3621			1050	24	Rp2	R3/4	1192
38	6.0/1.0	110	4332	1400	911	125	Rp2"	3621	125	Rp2"	1050	24	Rp2	R3/4	1320
39	6.0/1.3	110	4346	1400	913	125	Rp2"	3633	125	Rp2"	1050	24	Rp2	R3/4	1377
40	6.0/1.6	110	4350	1400	915	125	Rp2"	3635	125	Rp2"	1050	24	Rp2	R3/4	1505
41	8.0/0.8	110	3154	2000	1082			2362			1500	32	Rp2	R3/4	1598
42	8.0/1.0	110	3156	2000	1083	125	Rp2"	2363	125	Rp2"	1500	32	Rp2	R3/4	1605
43	8.0/1.3	110	3190	2000	1100	125	Rp2"	2380	125	Rp2"	1500	32	Rp2	R3/4	1960
44	8.0/1.6	110	3194	2000	1102	125	Rp2"	2382	125	Rp2"	1500	32	Rp2	R3/4	2315
45	10/0.8	110	3754	2000	1082			2962			1500	32	Rp2"	R3/4	1847
46	10/1.0	110	3756	2000	1083	150	Rp2"	2963	150	Rp2"	1500	32	Rp2"	R3/4	2262
47	10/1.3	110	3790	2000	1100	150	Rp2"	2980	150	Rp2"	1500	32	Rp2"	R3/4	2658
48	10/1.6	110	3794	2000	1102	150	Rp2"	2982	150	Rp2"	1500	32	Rp2"	R3/4	3054
49	12/0.8	110	4354	2000	1082			3562			1500	32	Rp2"	R3/4	2104
50	12/1.0	110	4356	2000	1083	150	Rp2"	3563	150	Rp2"	1500	32	Rp2"	R3/4	2577
51	12/1.3	110	4390	2000	1100	150	Rp2"	3580	150	Rp2"	1500	32	Rp2"	R3/4	3026
52	12/1.6	110	4394	2000	1102	150	Rp2"	3582	150	Rp2"	1500	32	Rp2"	R3/4	3475
53	15/0.8	110	4531	2200	1208			3618			1650	32	Rp2"	R1	2422
54	15/1.0	110	4533	2200	1209	150	Rp2"	3619	150	Rp2"	1650	32	Rp2"	R1	2971
55	15/1.3	110	4569	2200	1227	150	Rp2"	3637	150	Rp2"	1650	32	Rp2"	R1	3497
56	15/1.6	110	4573	2200	1229	150	Rp2"	3639	150	Rp2"	1650	32	Rp2"	R1	4023
57	20/0.8	110	5246	2400	1348			4168			1800	32	Rp3	R1	3680
58	20/1.0	110	5250	2400	1350	200	Rp3"	4170							

应用案例  
Application cases



空压机系统常用配置图  
Common configuration of air compressor system

