



JOY MACHINERY (SHANGHAI) CO.,LTD.

Contact
021-60832839

Website: www.shairbuild.com

Email: info@shairbuild.com

JOY MACHINERY (SHANGHAI) CO.,LTD.

ADD: No.1098, Chuansha Road, Pudong District, Shanghai, China.

Postal code: 201499

Website: www.sh-joymachinery.com

www.shairbuild.com

E-mail: info@shairbuild.com

Tel: 0086 21 60832839



2025 Version

卓颖机械 (上海) 有限公司
JOY MACHINERY (SHANGHAI) CO.,LTD.

卓颖机械
产品样册

PRODUCTS
CATALOGUE



卓颖机械 (上海) 有限公司





COMPANY PROFILE

JOY MACHINERY (SHANGHAI) CO., LTD. specializes in air compressors, committed to providing customers with stable, energy-saving, efficient and intelligent compressed air solutions, offering global users to enjoy the unique and beautiful experience of JOY MACHINERY products.

JOY MACHINERY strictly follows the ISO9001 international quality system and can provide a comprehensive range of intelligent air compressor products, including but not limited to: low-pressure, normal pressure, high-pressure screw air compressors, permanent magnet variable frequency two-stage compression air compressors, oil-free air compressors, mobile air compressors, and post-treatment equipment. The product is widely used in fields such as mechanical manufacturing, food and medicine, and petrochemicals etc. The company adheres to the corporate philosophy of "customer satisfaction is our unwavering pursuit", our products are exported to countries and regions such as Asia, Europe, America, Africa, etc., gaining a good market reputation.

JOY MACHINERY (SHANGHAI) CO., LTD. welcomes customers from all walks of life to join hands and create a better future together, with the slogan "Extraordinary quality, Leading Technology"!



CONTENTS	1
COMPANY PROFILE	2
Stationary Screw Air Compressor	3
Screw Air Compressor.....	7
Permanent Magnet (PM) Screw Air Compressor.....	8
Double Stage Compression Screw Air Compressor.....	9
Double Stage Compression PM Screw Air Compressor.....	10
Double Stage Compression PM Low Pressure Screw Air Compressor.....	11
Double Stage Compression PM Medium Pressure Screw Air Compressor.....	12
Integrated PM Screw Air Compressor.....	13
PM Screw Air Compressor for laser cutting.....	13
Water Lubricate Oil-free Screw Air Compressor	15
Fixed frequency Oil-free Screw Air Compressor.....	19
PM VSD Oil-free Screw Air Compressor.....	20
Low Pressure Oil-free Screw Air Compressor.....	21
Medium Pressure Oil-free Screw Air Compressor.....	21
Special Purpose Oil-free Screw Air Compressor.....	21
Dry Oil-free Screw Air Compressor	23
Fixed Frequency Dry Oil-free Screw Air Compressor.....	25
VSD Dry Oil-free Screw Air Compressor.....	27
Portable Screw Air Compressor	29
Diesel Portable Screw Air Compressor.....	29
Electrical Portable Screw Air Compressor.....	29
Miniature Electrical Portable Screw Air Compressor.....	30
Compressed Air Purification Equipment	31
Refrigerated Air Dryer.....	32
Adsorption Air Dryer.....	33
Combined Low Dew Point Air Dryer.....	35
Precision Filter.....	35
Air Receiver.....	36
Application cases	37
Common configuration of compressor System	38



Stationary Screw Air Compressor

Screw air compressor structure



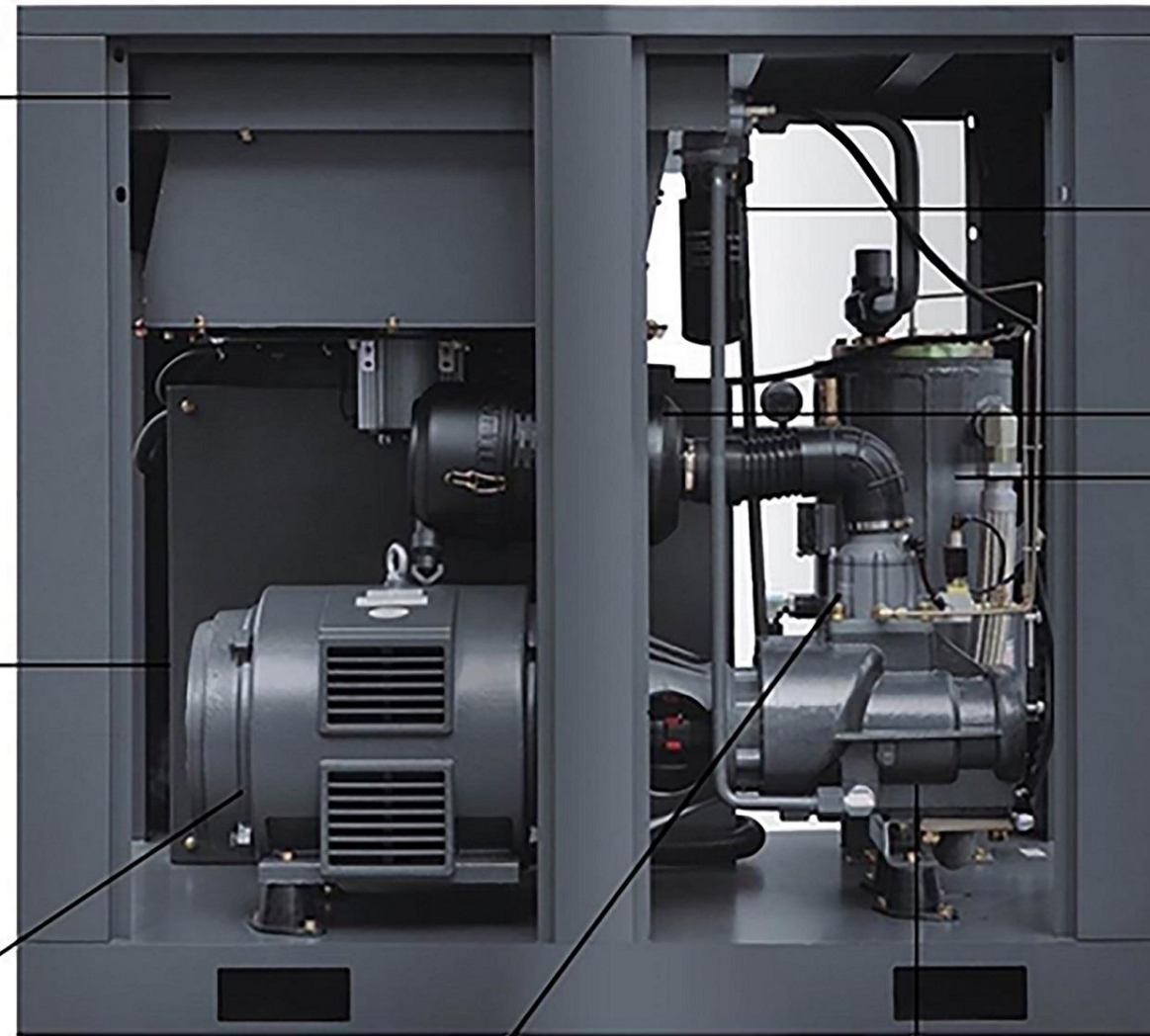
Easy-to-operate control system



Schneider electric components



Class F insulated motor, SKF heavy-duty bearing
Energy efficiency is 3-5% higher than similar product



Oil filter



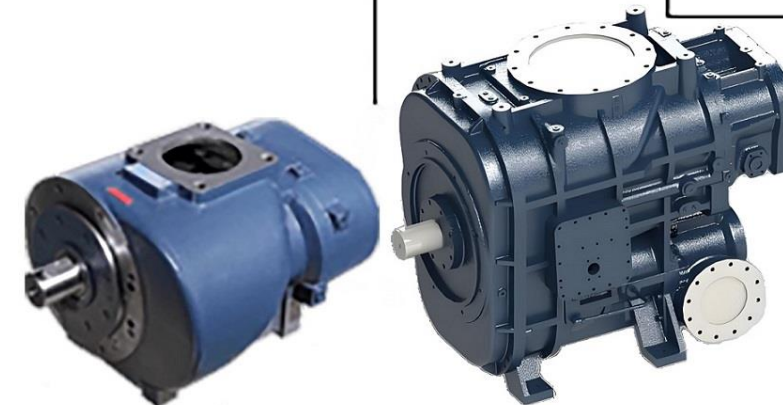
Air filter



Oil/air separator



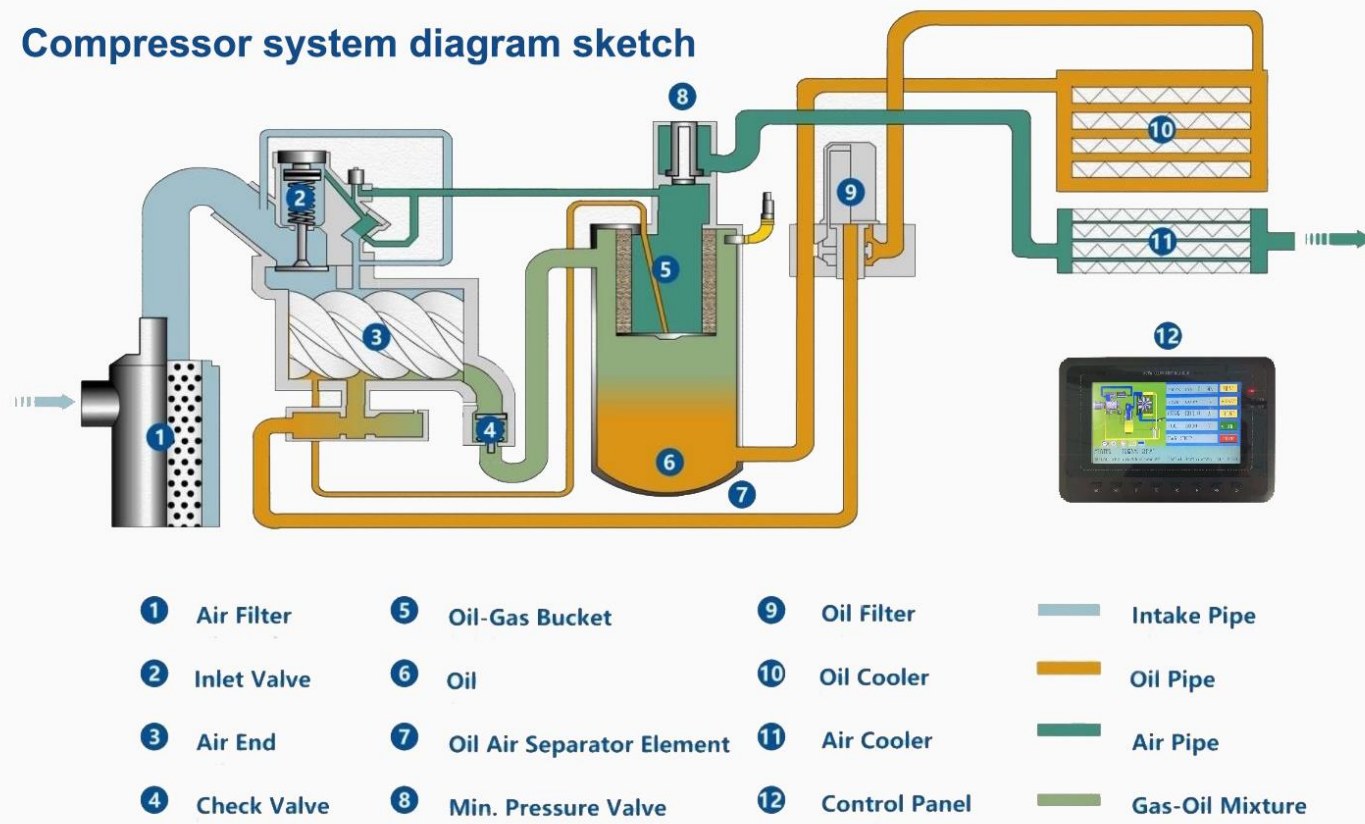
0-100% automatic adjustment
of air intake valve



High quality, high efficient air end



Compressor system diagram sketch



Main components of oil lubricated screw air compressor



Advanced double compression air end

The most energy-efficient isothermal compression with two-stage energy-saving up to 10%-30% ; Double stage compression, small compression ratio, less leakage, greatly improved bearing life.



Efficient permanent magnet synchronous motor

Made of rare earth permanent magnet materials, the big torque, small current; The working frequency range of energy-saving motors is wider and the operating noise is lower.



Special valves

Dedicated intake valve, easy to start unit with automatic adjustment, low flow rate, low intake noise; Reliable MPV, low pressure loss, precise control, no flow back.

Start-up of screw air compressor

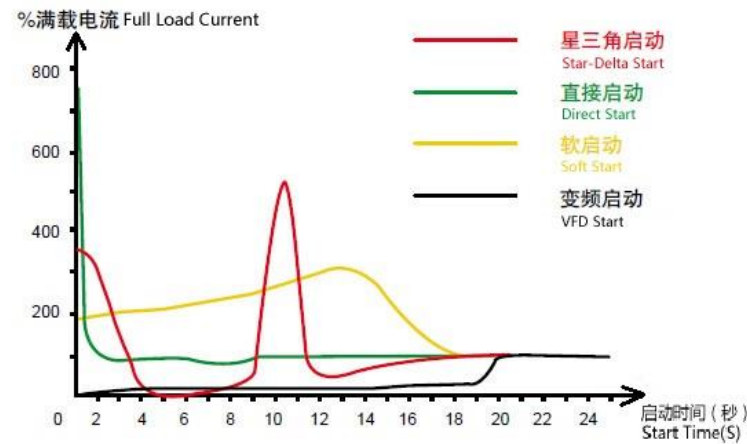


Diagram is shown in comparison with several methods of star, you can find frequency converted air compressor is slowly accelerated, which can start more smoothly, completely avoid the peak current.



Advanced and reliable electronic control system

Large size color LCD touch screen with excellent human-machine communication interface; Customized vector inverter fully monitors various parameters: voltage, three-phase imbalance, overvoltage, overtemperature, etc.;

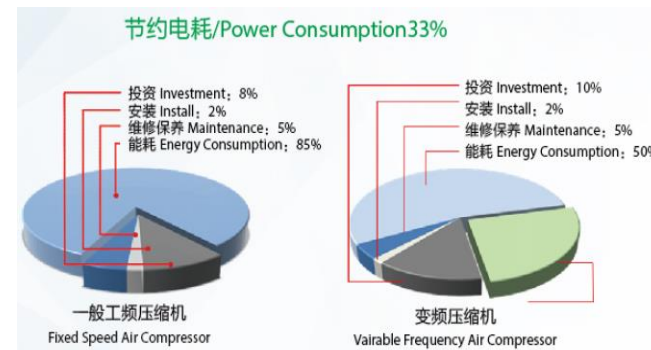
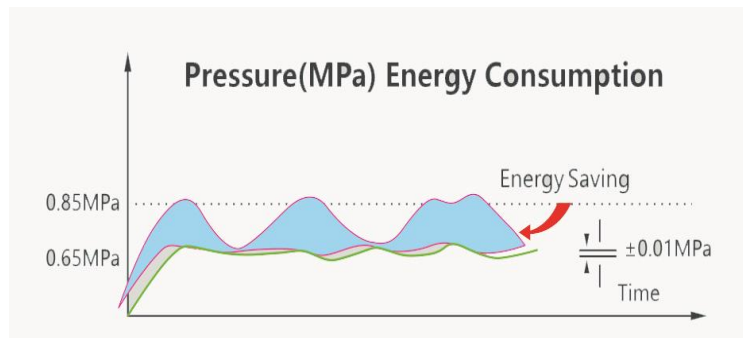


Silent centrifugal fan

Compared to axial flow fans, centrifugal fans have better cooling effects and are more energy-efficient; Higher wind pressure and lower noise;

Constant pressure, energy-saving

Cost Comparison



High quality filters

Choose a good filtering material with high filtration accuracy, good durability, and low pressure loss.



High quality and efficient couplings

The coupling is a torsional elastic coupling with failure protection function. It can effectively dampen and reduce the vibrations and impacts generated during operation.



Screw Air Compressor (7.5-355KW)



Product Feature

- Motor power: 7.5-355KW
- Air delivery: 0.70 -62.00 m³/min
- Pressure: 0.70-1.30 Mpa

规格参数表 Technical Parameters 卓颖机械(上海)有限公司 JOY MACHINERY (SHANGHAI) CO.,LTD.

Model	JM-7.5A	JM-11A	JM-15A	JM-22A	JM-30A	JM-37A	JM-45A	JM-55A	JM-75A	
Capacity/Pressure (m³/min/Mpa)	1.20/0.7	2.10/0.7	2.50/0.7	3.90/0.7	5.30/0.7	6.80/0.7	7.50/0.7	10.50/0.7	13.20/0.7	
	1.10/0.8	1.80/0.8	2.30/0.8	3.60/0.8	5.00/0.8	6.50/0.8	7.20/0.8	10.00/0.8	12.90/0.8	
	0.90/1.0	1.60/1.0	2.10/1.0	3.10/1.0	4.30/1.0	5.60/1.0	6.20/1.0	8.30/1.0	10.80/1.0	
	0.70/1.3	1.00/1.3	1.60/1.3	2.70/1.3	3.10/1.3	4.70/1.3	5.60/1.3	7.20/1.3	9.10/1.3	
Motor	Power(KW)	7.5	11	15	22	30	37	45	55	
	Power(HP)	10	15	20	30	40	50	60	75	
	Voltage/Hz	380V/3Ph/50Hz, Special voltage can be customized								
	Start	Y-Δ Start								
Noise DB (A)	70±2	70±2	70±2	72±2	72±2	72±2	72±2	72±2	75±2	
Ambient Temp(°C)	-5°C ~ +45°C									
Discharge Air Temp(°C)	≤ Ambient temperature +15 °C									
Size	Length(mm)	850	1050	1050	1300	1300	1400	1400	1750	
	Weight(mm)	645	750	750	895	895	960	960	1237	
	Height(mm)	800	1050	1050	1120	1120	1300	1300	1660	
Outlet (Inch)	Rp1/2	Rp3/4	Rp3/4	Rp1	Rp1	G1 1/2	G1 1/2	G2	G2	
Weight(KG)	200	230	260	320	460	520	750	980	1100	

Model	JM-90A	JM-110A	JM-132A	JM-160A	JM-185A	JM-220A	JM-250A	JM-315A	JM-355A	
Capacity/Pressure (m³/min/Mpa)	16.20/0.7	21.60/0.7	23.20/0.7	29.80/0.7	31.20/0.7	37.50/0.7	42.50/0.7	56.00/0.7	62.00/0.7	
	15.60/0.8	19.90/0.8	22.80/0.8	28.10/0.8	30.30/0.8	36.50/0.8	41.20/0.8	54.00/0.8	61.00/0.8	
	13.50/1.0	16.30/1.0	20.20/1.0	22.50/1.0	27.20/1.0	30.90/1.0	39.00/1.0	49.00/1.0	56.00/1.0	
	11.50/1.3	14.50/1.3	17.00/1.3	21.50/1.3	22.50/1.3	28.50/1.3	31.50/1.3	43.00/1.3	47.00/1.3	
Motor	Power(KW)	90	110	132	160	185	220	250	315	
	Power(HP)	120	150	175	220	250	300	350	480	
	Voltage/Hz	380V/3Ph/50Hz, Special voltage can be customized								
	Start	Y-Δ Start								
Noise DB (A)	75±2	75±2	80±2	80±2	81±2	81±2	81±2	81±2	84±2	
Ambient Temp(°C)	-5°C ~ +45°C									
Discharge Air Temp(°C)	≤ Ambient temperature +15 °C									
Size	Length(mm)	2000	2000	2000	2900	3200	3200	3500	4300	
	Weight(mm)	1540	1540	1540	1625	1880	1880	2280	2300	
	Height(mm)	1800	1800	1800	1800	1890	1890	2250	2430	
Outlet (Inch)	G2 1/2	G2 1/2	G1 1/2	DN80	DN80	DN80	DN100	DN125	DN150	
Weight(KG)	1700	1850	2100	2500	2630	2900	3300	7000	8000	

A represents compressor is cooled by air. W represents compressor is cooled by water.

Permanent Magnet (PM) Screw Air Compressor (7.5-250KW)



Product Feature

- Motor power: 7.5-250KW
- Air delivery: 0.70 -42.30 m³/min
- Pressure: 0.70-1.30 Mpa

规格参数表 Technical Parameters 卓颖机械(上海)有限公司 JOY MACHINERY (SHANGHAI) CO.,LTD.

Model	JM-7.5APM	JM-11APM	JM-15APM	JM-22APM	JM-30APM	JM-37APM	JM-45APM	JM-55APM	JM-75APM	
Capacity/Pressure (m³/min/Mpa)	1.20/0.7	2.10/0.7	2.50/0.7	3.90/0.7	5.30/0.7	6.80/0.7	7.50/0.7	10.50/0.7	13.20/0.7	
	1.10/0.8	1.80/0.8	2.30/0.8	3.60/0.8	5.00/0.8	6.50/0.8	7.20/0.8	10.00/0.8	12.90/0.8	
	0.90/1.0	1.60/1.0	2.10/1.0	3.10/1.0	4.30/1.0	5.60/1.0	6.20/1.0	8.30/1.0	10.80/1.0	
	0.70/1.3	1.00/1.3	1.60/1.3	2.70/1.3	3.10/1.3	4.70/1.3	5.60/1.3	7.20/1.3	9.10/1.3	
Motor	Power(KW)	7.5	11	15	22	30	37	45	55	
	Power(HP)	10	15	20	30	40	50	60	75	
	Voltage/Hz	380V/3Ph/50Hz, Special voltage can be customized								
	Start	VSD Start								
Noise DB (A)	70±2	70±2	70±2	72±2	72±2	72±2	72±2	72±2	75±2	
Ambient Temp(°C)	-5°C ~ +45°C									
Discharge Air Temp(°C)	≤ Ambient temperature +15 °C									
Size	Length(mm)	730	1000	1000	1050	1250	1250	1750	1750	
	Weight(mm)	520	660	660	825	900	900	1237	1237	
	Height(mm)	840	1050	1050	1115	1300	1300	1660	1660	
Outlet (Inch)	Rp1/2	Rp3/4	Rp3/4	Rp1	G1 1/2	G1 1/2	G2	G2	G2	
Weight(KG)	150	220	230	300	420	450	880	1050	1200	

Model	JM-90APM	JM-110APM	JM-132APM	JM-160APM	JM-185APM	JM-200APM	JM-220APM	JM-250APM	
Capacity/Pressure (m³/min/Mpa)	16.20/0.7	21.60/0.7	23.20/0.7	29.80/0.7	31.20/0.7	36.50/0.7	37.50/0.7	42.30/0.7	
	15.60/0.8	19.90/0.8	22.80/0.8	28.10/0.8	30.30/0.8	35.00/0.8	36.50/0.8	41.20/0.8	
	13.50/1.0	16.30/1.0	20.20/1.0	22.50/1.0	27.20/1.0	29.20/1.0	30.90/1.0	36.90/1.0	
	11.50/1.3	14.50/1.3	17.00/1.3	21.50/1.3	22.50/1.3	25.50/1.3	28.50/1.3	31.50/1.3	
Motor	Power(KW)	90	110	132	160	185	200	250	
	Power(HP)	120	150	175	220	250	275	350	
	Voltage/Hz	380V/3Ph/50Hz, Special voltage can be customized							
	Start	VSD Start							
Noise DB (A)	75±2	75±2	80±2	80±2	81±2	81±2	81±2	84±2	
Ambient Temp(°C)	-5°C ~ +45°C								
Discharge Air Temp(°C)	≤ Ambient temperature +15 °C								
Size	Length(mm)	2000	2000	2900	2900	3200	3800	3200	
	Weight(mm)	1540	1540	1625	1625	1880	2300	1880	
	Height(mm)	1800	1800	1800	1800	1890	2300	1890	
Outlet (Inch)	G2	G2	DN80	DN80	DN80	DN125	DN80	DN100	
Weight(KG)	1800	1900	2100	2600	2800	4800	3100	3600	



Double Stage Compression Screw Air Compressor (15-355KW)



Product Feature

- Motor power: 15-400 KW
- Air delivery: 2.70 -89.0 m³/min
- Pressure: 0.70-1.30 Mpa

规格参数表 Technical Parameters 卓颖机械(上海)有限公司 JOY MACHINERY (SHANGHAI) CO.,LTD.

Model	JM-22AII	JM-30AII	JM-37AII	JM-45AII	JM-55AII	JM-75WII	JM-90WII	JM-110WII	JM-132WII	
Capacity/Pressure (m ³ /min/Mpa)	4.30/0.7	6.40/0.7	8.00/0.7	10.50/0.7	12.80/0.7	16.80/0.7	20.60/0.7	24.30/0.7	27.70/0.7	
	4.10/0.8	5.90/0.8	7.20/0.8	9.60/0.8	12.20/0.8	15.90/0.8	19.90/0.8	23.20/0.8	26.20/0.8	
	3.50/1.0	---/1.0	6.80/1.0	9.10/1.0	11.30/1.0	13.90/1.0	17.60/1.0	20.50/1.0	23.00/1.0	
	2.70/1.3	3.90/1.3	5.40/1.3	6.80/1.3	8.00/1.3	11.50/1.3	14.00/1.3	16.50/1.3	19.00/1.3	
Motor	Power(KW)	22	30	37	45	55	75	90	110	132
	Power(HP)	30	40	50	60	75	100	120	150	180
	Voltage/Hz	380V/3Ph/50Hz, Special voltage can be customized								
	Start	Y-Δ Start								
Noise DB (A)	72±2	72±2	72±2	72±2	75±2	75±2	75±2	80±2	80±2	
Ambient Temp(°C)	-5°C ~ +45°C									
Discharge Air Temp(°C)	≤ Ambient temperature +15 °C									
Size	Length(mm)	1300	1400	1500	1750	1750	2000	2000	2900	2900
	Weight(mm)	980	1100	1100	1237	1237	1540	1540	1625	1625
	Height(mm)	1220	1450	1350	1660	1660	1800	1800	1800	1800
Outlet (Inch)	G1"	G1 1/2"	G1 1/2"	G2"	G2"	G2 1/2"	G2 1/2"	DN80	DN80	
Weight(KG)	560	800	900	1170	1560	1800	2100	2600	2900	

Model	JM-160WII	JM-185WII	JM-200WII	JM-220WII	JM-250WII	JM-280WII	JM-315WII	JM-355WII	JM-400WII	
Capacity/Pressure (m ³ /min/Mpa)	33.50/0.7	41.20/0.7	43.20/0.7	47.00/0.7	55.00/0.7	58.00/0.7	62.10/0.7	81.00/0.7	89.00/0.7	
	32.00/0.8	38.00/0.8	40.50/0.8	46.10/0.8	51.60/0.8	55.00/0.8	60.00/0.8	78.00/0.8	84.50/0.8	
	30.30/1.0	33.60/1.0	39.70/1.0	41.70/1.0	46.20/1.0	52.00/1.0	54.00/1.0	64.00/1.0	77.00/1.0	
	26.00/1.3	29.00/1.3	31.50/1.3	35.00/1.3	40.50/1.3	43.00/1.3	52.00/1.3	56.00/1.3	64.00/1.3	
Motor	Power(KW)	160	185	200	220	250	280	315	400	
	Power(HP)	215	250	270	300	350	375	420	540	
	Voltage/Hz	380V/3Ph/50Hz, Special voltage can be customized								
	Start	Y-Δ Start								
Noise DB (A)	80±2	82±2	82±2	82±2	84±2	82±2	84±2	84±2	86±2	
Ambient Temp(°C)	-5°C ~ +45°C									
Discharge Air Temp(°C)	≤ Ambient temperature +15 °C									
Size	Length(mm)	3200	3500	3500	3500	3800	3800	3800	4000	4200
	Weight(mm)	1880	2280	2280	2280	2315	2300	2315	2300	2350
	Height(mm)	1890	2250	2250	2250	2250	2200	2250	2320	2350
Outlet (Inch)	DN80	DN100	DN100	DN100	DN125	DN125	DN125	DN125	DN150	
Weight(KG)	3600	5200	5500	6200	6900	6800	6900	8000	9000	

Double Stage Compression Permanent Magnet (PM) Screw Air Compressor (15-355KW)



Product Feature

- Motor power: 15-400 KW
- Air delivery: 2.70 -89.00 m³/min
- Pressure: 0.70-1.30 Mpa

规格参数表 Technical Parameters 卓颖机械(上海)有限公司 JOY MACHINERY (SHANGHAI) CO.,LTD.

Model	JM-22APMII	JM-30APMII	JM-37APMII	JM-45APMII	JM-55APMII	JM-75WPMII	JM-90WPMII	JM-110WPMII	JM-132WPMII	
Capacity/Pressure (m ³ /min/Mpa)	4.30/0.7	6.40/0.7	8.00/0.7	10.50/0.7	12.80/0.7	16.80/0.7	20.60/0.7	24.30/0.7	27.70/0.7	
	4.10/0.8	5.90/0.8	7.20/0.8	9.60/0.8	12.20/0.8	15.90/0.8	19.90/0.8	23.20/0.8	26.20/0.8	
	3.50/1.0	---/1.0	6.80/1.0	9.10/1.0	11.30/1.0	13.90/1.0	17.60/1.0	20.50/1.0	23.00/1.0	
	2.70/1.3	3.90/1.3	5.40/1.3	6.80/1.3	8.00/1.3	11.50/1.3	14.00/1.3	16.50/1.3	19.00/1.3	
Motor	Power(KW)	22	30	37	45	55	75	90	110	132
	Power(HP)	30	40	50	60	75	100	120	150	180
	Voltage/Hz	380V/3Ph/50Hz, Special voltage can be customized								
	Start	VSD Start								
Noise DB (A)	72±2	72±2	72±2	72±2	75±2	75±2	75±2	80±2	80±2	
Ambient Temp(°C)	-5°C ~ +45°C									
Discharge Air Temp(°C)	≤ Ambient temperature +15 °C									
Size	Length(mm)	1300	1400	1500	1750	1750	2000	2000	2900	2900
	Weight(mm)	980	1100	1100	1237	1237	1540	1540	1625	1625
	Height(mm)	1220	1450	1350	1660	1660	1800	1800	1800	1800
Outlet (Inch)	G1"	G1 1/2"	G1 1/2"	G2"	G2"	G2 1/2"	G2 1/2"	DN80	DN80	
Weight(KG)	560	800	900	1170	1560	1800	2100	2600	2900	

Model	JM-160WPMII	JM-185WPMII	JM-200WPMII	JM-220WPMII	JM-250WPMII	JM-280WPMII	JM-315WPMII	JM-355WPMII	JM-400WPMII	
Capacity/Pressure (m ³ /min/Mpa)	33.50/0.7	41.20/0.7	43.20/0.7	47.00/0.7	55.00/0.7	58.00/0.7	62.10/0.7	81.00/0.7	89.00/0.7	
	32.00/0.8	38.00/0.8	40.50/0.8	46.10/0.8	51.60/0.8	55.00/0.8	60.00/0.8	78.00/0.8	84.50/0.8	
	30.30/1.0	33.60/1.0	39.70/1.0	41.70/1.0	46.20/1.0	52.00/1.0	54.00/1.0	64.00/1.0	77.00/1.0	
	26.00/1.3	29.00/1.3	31.50/1.3	35.00/1.3	40.50/1.3	43.00/1.3	52.00/1.3	56.00/1.3	64.00/1.3	
Motor	Power(KW)	160	185	200	220	250	280	315	400	
	Power(HP)	215	250	270	300	350	375	420	540	
	Voltage/Hz	380V/3Ph/50Hz, Special voltage can be customized								
	Start	VSD Start								
Noise DB (A)	80±2	82±2	82±2	82±2	84±2	82±2	84±2	84±2	86±2	
Ambient Temp(°C)	-5°C ~ +45°C									
Discharge Air Temp(°C)	≤ 环境温度+15 °C ≤ Ambient temperature +15 °C									
Size	Length(mm)	3200	3500	3500	3500	3800	3800	3800	4000	4200
	Weight(mm)	1880	2280	2280	2280	2315	2300	2315	2300	2350
	Height(mm)	1890	2250	2250	2250	2250	2200	2250	2320	2350
Outlet (Inch)	DN80	DN100	DN100	DN100	DN125	DN125	DN125	DN125	DN150	
Weight(KG)	3600	5200	5500	6200	6900	6800	6900	8000	9000	



Double Stage Compression PM Low Pressure Screw Air Compressor (15-315KW)



Product Feature

- Motor Power :11-315 KW
- Discharge delivery: 2.80-82.00 m³/min
- Discharge Pressure: 0.4-0.5 Mpa

规格参数表 Technical Parameters 卓颖机械(上海)有限公司 JOY MACHINERY (SHANGHAI) CO.,LTD.

Model	JM-11APMII	JM-15APMII	JM-22APMII	JM-30APMII	JM-37APMII	JM-45APMII	JM-55APMII	JM-75APMII	JM-90APMII	
Capacity/Pressure (m ³ /min/Mpa)	3.20/0.4	4.20/0.4	6.20/0.4	8.50/0.4	10.30/0.4	12.20/0.4	15.50/0.4	20.50/0.4	26.50/0.4	
	2.80/0.5	3.60/0.5	6.00/0.5	7.50/0.5	9.50/0.5	11.50/0.5	14.50/0.5	19.50/0.5	23.50/0.5	
Motor	Power(KW)	11	15	22	30	37	45	55	75	90
	Power(HP)	15	20	30	40	50	60	75	100	120
	Voltage/Hz	380V/3Ph/50Hz, Special voltage can be customized								
	Start	VSD Start								
Noise DB (A)	72±2	72±2	72±2	72±2	72±2	72±2	75±2	75±2	75±2	
Ambient Temp(°C)	-5°C ~ +45°C									
Discharge Air Temp(°C)	≤ Ambient temperature +15 °C									
Size	Length(mm)	1300	1300	1400	1400	2100	2100	2100	2450	2600
	Weight(mm)	980	980	1100	1100	1440	1440	1440	1700	1900
	Height(mm)	1220	1220	1450	1450	1650	1650	1650	1765	1890
Outlet (Inch)	G1"	G1"	G1 1/2"	G1 1/2"	G2 1/2"	G2 1/2"	G2 1/2"	DN65	DN80	
Weight(KG)	500	550	800	850	1600	1650	1700	2400	2800	

Model	JM-110APMII	JM-132APMII	JM-160APMII	JM-185APMII	JM-200APMII	JM-220APMII	JM-250APMII	JM-280APMII	JM-315APMII	
Capacity/Pressure (m ³ /min/Mpa)	30.00/0.4	38.00/0.4	47.00/0.4	52.00/0.4	57.00/0.4	62.00/0.4	65.00/0.4	---/0.4	---/0.4	
	27.00/0.5	35.00/0.5	42.00/0.5	45.00/0.5	53.50/0.5	55.00/0.5	61.00/0.5	70.50/0.5	82.00/0.5	
Motor	Power(KW)	110	132	160	185	200	220	250	280	315
	Power(HP)	150	175	215	250	270	300	350	375	420
	Voltage/Hz	380V/3Ph/50Hz, Special voltage can be customized								
	Start	VSD Start								
Noise DB (A)	80±2	80±2	80±2	82±2	82±2	82±2	84±2	84±2	84±2	
Ambient Temp(°C)	-5°C ~ +45°C									
Discharge Air Temp(°C)	≤ Ambient temperature +15 °C									
Size	Length(mm)	2600	3250	3250	3600	3800	4200	4200	4200	4200
	Weight(mm)	1900	2100	2100	2300	2300	2350	2350	2350	2350
	Height(mm)	1890	2200	2200	2290	2200	2350	2350	2350	2350
Outlet (Inch)	DN80	DN100	DN100	DN125	DN125	DN125	DN125	DN150	DN150	
Weight(KG)	2900	4000	4400	6000	6500	7500	8000	8500	9000	

Double Stage Compression PM Medium Pressure Screw Air Compressor (11-355KW)



Product Feature

- Motor power: 11-355 KW
- Air delivery: 0.90 -33.50 m³/min
- Pressure: 2.0-3.0 Mpa

规格参数表 Technical Parameters 卓颖机械(上海)有限公司 JOY MACHINERY (SHANGHAI) CO.,LTD.

Model	JM-11APMII	JM-15APMII	JM-22APMII	JM-30APMII	JM-37APMII	JM-45APMII	JM-55APMII	JM-75APMII	JM-90APMII	
Capacity/Pressure (m ³ /min/Mpa)	1.00/2.0	---/2.0	---/2.0	3.40/2.0	---/2.0	5.10/2.0	6.50/2.0	9.00/2.0	11.00/2.0	
	---/2.2	---/2.2	2.40/2.2	---/2.2	---/2.2	5.00/2.2	6.20/2.2	7.70/2.2	10.00/2.2	
	0.90/2.5	---/2.5	2.00/2.5	3.00/2.5	---/2.5	4.90/2.5	6.00/2.5	7.00/2.5	9.10/2.5	
	---/3.0	1.00/3.0	---/3.0	2.20/3.0	3.30/3.0	---/3.0	4.60/3.0	6.60/3.0	7.50/3.0	
Motor	Power(KW)	11	15	22	30	37	45	55	75	90
	Power(HP)	15	20	30	40	50	60	75	100	120
	Voltage/Hz	380V/3Ph/50Hz, Special voltage can be customized								
	Start	VSD Start								
Noise DB (A)	72±2	72±2	72±2	72±2	72±2	72±2	75±2	75±2	75±2	
Ambient Temp(°C)	-5°C ~ +45°C									
Discharge Air Temp(°C)	≤ Ambient temperature +15 °C									
Size	Length(mm)	1000	1000	1100	1100	1200	2100	2100	2100	2450
	Weight(mm)	750	750	850	850	1000	1440	1440	1440	1700
	Height(mm)	1070	1070	1110	1110	1350	1650	1650	1650	1760
Outlet (Inch)	G3/4"	G3/4"	G1"	G1"	G1 1/2"	G2"	G2"	G2"	DN65	
Weight(KG)	200	210	320	330	620	1400	1500	1600	2400	

Model	JM-110APMII	JM-132APMII	JM-160APMII	JM-185APMII	JM-200APMII	JM-220APMII	JM-250APMII	JM-315APMII	JM-355APMII	
Capacity/Pressure (m ³ /min/Mpa)	12.50/2.0	16.00/2.0	18.00/2.0	23.00/2.0	25.50/2.0	28.00/2.0	31.00/2.0	---/2.0	'---/2.0	
	12.00/2.2	15.00/2.2	17.40/2.2	21.50/2.2	24.50/2.2	26.00/2.2	29.00/2.2	34.00/2.2	---/2.2	
	11.50/2.5	14.20/2.5	16.00/2.5	19.00/2.5	23.00/2.5	24.00/2.5	27.00/2.5	31.00/2.5	'---/2.5	
	9.20/3.0	12.00/3.0	14.00/3.0	16.00/3.0	17.00/3.0	21.50/3.0	24.00/3.0	28.00/3.0	33.50/3.0	
Motor	Power(KW)	110	132	160	185	200	220	250	315	355
	Power(HP)	150	175	215	250	270	300	350	420	475
	Voltage/Hz	380V/3Ph/50Hz, Special voltage can be customized								
	Start	VSD Start								
Noise DB (A)	80±2	80±2	80±2	82±2	82±2	82±2	84±2	84±2	84±2	
Ambient Temp(°C)	-5°C ~ +45°C									
Discharge Air Temp(°C)	≤ Ambient temperature +15 °C									
Size	Length(mm)	2600	2600	3250	3250	3250	3800	3800	4000	4300
	Weight(mm)	1900	1900	2100	2100	2100	2300	2300	2300	2300
	Height(mm)	1890	1890	2200	2200	2200	2200	2200	2430	2430
Outlet (Inch)	DN80	DN80	DN80	DN80	DN80	DN100	DN80	DN80	DN80	
Weight(KG)	2800	3000	4300	4400	4600	6500	7000	8500	9000	



Integrated PM Screw Air Compressor (7.5-37KW)



- Product Feature**
- Motor Power :7.5-37 KW
 - Discharge delivery: 0.70-6.80 m3/min
 - Discharge Pressure: 0.7-1.3 Mpa

Motor + Air end combination

Model	JMI-7.5APM	JMI-15APM	JMI-22APM	JMI-37APM	
Capacity/Pressure (m³/min/Mpa)	1.20/0.7	2.50/0.7	3.90/0.7	6.80/0.7	
	1.10/0.8	2.30/0.8	3.60/0.8	6.50/0.8	
	0.90/1.0	2.10/1.0	3.10/1.0	5.60/1.0	
	0.70/1.3	1.60/1.3	2.70/1.3	4.70/1.3	
Motor	Power(KW)	7.5	15	22	
	Power(HP)	10	20	30	50
	Voltage/Hz	380V/3Ph/50Hz, Special voltage can be customized			
	Start	VSD Start			
Noise DB (A)	70±2	70±2	72±2	72±2	
Ambient Temp(°C)	-5°C ~ +45°C				
Discharge Air Temp(°C)	≤Ambient temperature +15 °C				
Size	Length(mm)	1650	1840	1875	
	Weight(mm)	695	800	850	
	Height(mm)	1495	1740	1785	
Outlet (Inch)	G1/2	G3/4	G1	G1 1/2	
Weight(KG)	180	320	420	600	

Motor + Air end coupling

Model	JMI-7.5APM	JMI-15APM	JMI-22APM	
Capacity/Pressure (m³/min/Mpa)	1.20/0.7	2.50/0.7	3.90/0.7	
	1.10/0.8	2.30/0.8	3.60/0.8	
	0.90/1.0	2.10/1.0	3.10/1.0	
	0.70/1.3	1.60/1.3	2.70/1.3	
Motor	Power(KW)	7.5	15	
	Power(HP)	10	20	30
	Voltage/Hz	380V/3Ph/50Hz, Special voltage can be customized		
	Start	VSD Start		
Noise DB (A)	70±2	70±2	72±2	
Ambient Temp(°C)	-5°C ~ +45°C			
Discharge Air Temp(°C)	≤Ambient temperature +15 °C			
Size	Length(mm)	1848	2070	
	Weight(mm)	768	955	
	Height(mm)	1615	1858	
Outlet (Inch)	G1/2	G3/4	G1	
Weight(KG)	180	320	420	

PM Screw Air Compressor for laser cutting (7.5-160KW)



Integrated PM Screw Air Compressor for laser cutting

Product Feature

- Motor Power :7.5-160 KW
- Discharge delivery: 0.60-22.00 m3/min
- Discharge Pressure: 1.6-2.0 Mpa

Model	JMI-7.5APM	JMI-11APM	JMI-15APM	JMI-22APM	JMI-30APM	JMI-37APM	JMI-45APM	
Capacity/Pressure (m³/min/Mpa)	0.60/1.55	0.90/1.6	1.20/1.6	2.00/1.6	2.50/1.6	3.50/1.6	4.30/1.6	
	---/2.0	---/2.0	1.00/2.0	1.70/2.0	2.20/2.0	3.20/2.0	3.80/2.0	
Motor	Power(KW)	7.5	11	15	22	30	45	
	Power(HP)	10	15	20	30	40	60	
	Voltage/Hz	380V/3Ph/50Hz, Special voltage can be customized						
	Start	VSD Start						
Noise DB (A)	70±2	70±2	70±2	72±2	72±2	75±2	75±2	
Ambient Temp(°C)	-5°C ~ +45°C							
Discharge Air Temp(°C)	≤Ambient temperature +15 °C							
Size	Length(mm)	1500	1800	1800	1800	1990	1990	
	Weight(mm)	670	750	750	850	850	980	
	Height(mm)	1430	1770	1770	1930	1930	1970	
Outlet (Inch)	G1/2"	G3/4"	G3/4"	G1"	G1"	G2 1/2"	G2 1/2"	
Weight(KG)	355	570	590	690	720	930	980	

PM Screw Air Compressor for laser cutting

Model	JM-7.5APM	JM-11APM	JM-15APM	JM-22APM	JM-30APM	JM-37APM	JM-45APM	JM-55APM	JM-75APM	JM-90APM	JM-110APM	
Capacity/Pressure (m³/min/Mpa)	0.60/1.55	0.90/1.6	1.20/1.6	2.00/1.6	2.50/1.6	3.40/1.6	4.30/1.6	5.90/1.6	8.10/1.6	9.50/1.6	13.00/1.6	
	---/2.0	---/2.0	1.00/2.0	1.70/2.0	2.20/2.0	3.20/2.0	3.80/2.0	4.20/2.0	6.50/2.0	8.50/2.0	9.80/2.0	
Motor	Power(KW)	7.5	11	15	22	30	37	45	55	75	110	
	Power(HP)	10	15	20	30	40	50	60	75	100	150	
	Voltage/Hz	380V/3Ph/50Hz, Special voltage can be customized										
	Start	VSD Start										
Noise DB (A)	70±2	70±2	70±2	72±2	72±2	72±2	72±2	72±2	75±2	75±2	75±2	
Ambient Temp(°C)	-5°C ~ +45°C											
Discharge Air Temp(°C)	≤Ambient temperature +15 °C											
Size	Length(mm)	800	1000	1000	1070	1070	1200	1200	1700	1700	2250	
	Weight(mm)	650	750	750	850	850	1000	1000	1210	1210	1510	
	Height(mm)	860	1000	1000	1140	1140	1390	1390	1550	1550	1850	
Outlet (Inch)	G1/2"	G3/4"	G3/4"	G1"	G1"	G1 1/2"	G1 1/2"	G2 1/2"	G2 1/2"	G2 1/2"	DN65	
Weight(KG)	180	300	320	420	450	600	650	900	1050	1200	2500	

Double stage PM Screw Air Compressor for laser cutting

Model	JM-37APMII	JM-45APMII	JM-55APMII	JM-75APMII	JM-90APMII	JM-110APMII	JM-132APMII	JM-160APMII	
Capacity/Pressure (m³/min/Mpa)	3.60/1.6	5.30/1.6	6.50/1.6	9.00/1.6	11.20/1.6	15.00/1.6	18.50/1.6	22.00/1.6	
	---/2.0	---/2.0	---/2.0	---/2.0	---/2.0	---/2.0	---/2.0	---/2.0	
Motor	Power(KW)	37	45	55	75	90	110	160	
	Power(HP)	50	60	75	100	120	150	220	
	Voltage/Hz	380V/3Ph/50Hz, Special voltage can be customized							
	Start	VSD Start							
Noise DB (A)	72±2	72±2	72±2	75±2	75±2	75±2	80±2	80±2	
Ambient Temp(°C)	-5°C ~ +45°C								
Discharge Air Temp(°C)	≤Ambient temperature +15 °C								
Size	Length(mm)	1400	2100	2100	2100	2100	2600	3250	
	Weight(mm)	1100	1440	1440	1440	1440	1900	2100	
	Height(mm)	1450	1650	1650	1650	1650	1890	2200	
Outlet (Inch)	G1 1/2"	G2 1/2"	G2 1/2"	G2 1/2"	G2 1/2"	G2 1/2"	DN50	DN80	
Weight(KG)	700	1600	1650	1650	1700	2700	2900	4000	



JOY MACHINERY water lubricated oil-free screw air compressors

TECHNICAL ADVANTAGE





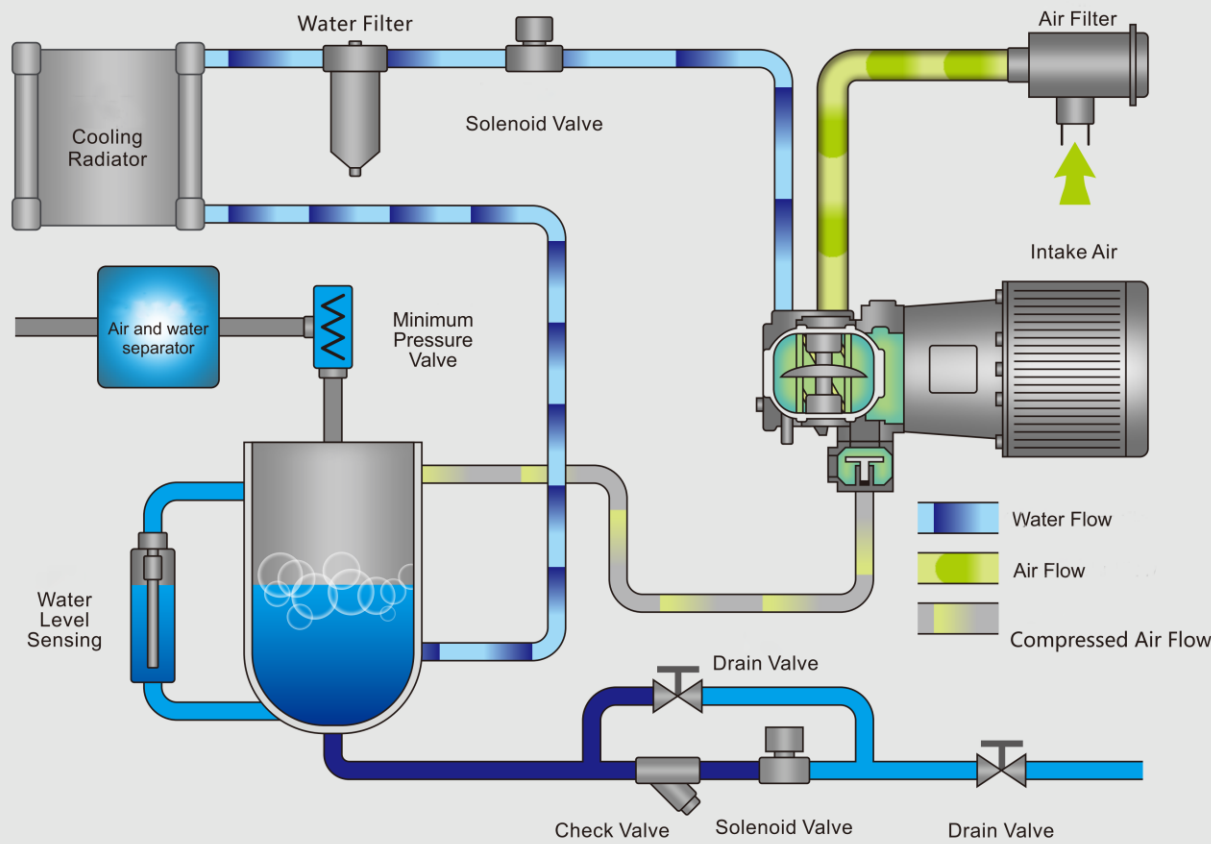
Oil-free Water Lubricated Screw Air Compressor (5.5-460KW)

Our oil-free air compressors are conformed to the latest industry standard: ISO 8573-1 CLASS 0 (2010). You can eliminate so many risks: no risk of contamination of oil, of damaged or unsafe products, of losses from operational downtime or of jeopardizing your company's well-earned reputation. Safeguard the environment and comply with international regulations with our oil-free air solutions, minimizing leaks and energy waste.



1. 100% Oil-free
2. Low noise without vibration
3. Available for VSD control
4. Extremely low operation and maintenance costs (only covering water, water filter element and air filter element)

WATER LUBRICATED AIR COMPRESSOR SYSTEM FLOW DIAGRAM OF COMPRESSOR UNIT



Excellent performance origins from the world's top configuration



Intelligent energy-saving control system developed independently



Denmark Danfoss solenoid valve



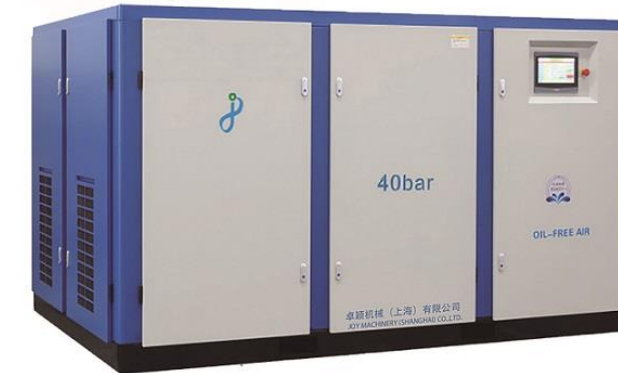
Top SIEMENS Schneider control components



High performance electrical components



High precision filter



High quality inverter



High efficient exchanger



High efficient/performance motor



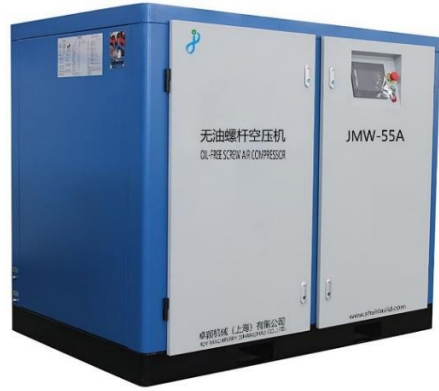
German Schaeffler bearings
Swedish SKF bearings



Remote IOT, smart cloud



Fixed Frequency Water Lubricated Oil-free Screw Air Compressor (5.5-250KW)



Product Feature

- Motor Power :5.5-55 KW
- Discharge delivery: 0.65-10.30 m3/min
- Discharge Pressure: 0.8-1.25 Mpa

Permanent Magnet Water Lubricated Oil-free Screw Air Compressor (5.5-250KW)



Product Feature

- Motor Power :5.5-250 KW
- Discharge delivery: 0.20-45.00 m3/min
- Discharge Pressure: 0.8-1.25 Mpa

TECHNICAL PARAMETERS

Model	Air Capacity	Pressure	Power		Noise	Cooling water outlet	Cooling water	Lubricated water	Dimension	Outlet	Weight
	m3/min	Mpa	KW	HP	DB	Ton/Hour	L	L*W*H	KG		
JMW-5.5A	0.78	0.8	5.5	7.5	57±2	3/4"	1.5	10	800*800*1200	3/4"	430
	0.65	1.0									
JMW-7.5A	1.17	0.8	7.5	10	57±2	3/4"	2.0	10	800*800*1200	3/4"	470
	1.05	1.0									
	0.81	1.25									
JMW-11A	1.72	0.8	11	15	60±2	1"	2.5	26	1200*855*1335	3/4"	580
	1.42	1.0									
	1.25	1.25									
JMW-15A	2.43	0.8	15	20	60±2	1"	3.5	26	1200*855*1335	14"	620
	2.17	1.0									
	1.80	1.25									
JMW-18.5A	3.13	0.8	18.5	25	63±2	1"	4.0	30	1400*1010*1340	1"	680
	2.82	1.0									
	2.05	1.25									
JMW-22A	3.70	0.8	22	30	63±2	1"	5.0	30	1400*1010*1340	1"	730
	3.21	1.0									
	2.78	1.25									
JMW-30A	5.20	0.8	30	40	66±2	1 1/2"	7.0	40	1650*1180*1505(A) 1500*1080*1300(W)	1 1/2"	1100
	4.43	1.0									
	3.63	1.25									
JMW-37A	6.50	0.8	37	50	66±2	1 1/2"	9.0	40	1650*1180*1505(A) 1500*1080*1505(W)	1 1/2"	1150
	5.33	1.0									
	4.77	1.25									
JMW-45A	8.30	0.8	45	60	68±2	1 1/2"	10.0	90	2050*1300*1758(A) 1800*1360*1670(W)	2"	1390
	6.30	1.0									
	5.56	1.25									
JMW-55A	10.30	0.8	55	75	69±2	1 1/2"	12.0	100	2150*1360*1758(A) 1800*1360*1670(W)	2"	1470
	8.55	1.0									
	7.67	1.25									

TECHNICAL PARAMETERS

Model	Air Capacity	Pressure	Power		Noise	Cooling water outlet	Cooling water	Lubricated water	Dimension	Outlet	Weight
	m³/min	Mpa	KW	HP	DB	Ton/Hour	L	L*W*H	KG		
JMW-5.5APM	0.30-0.78	0.8	5.5	7.5	57±2	3/4"	1.5	10	800*800*1200	3/4"	460
	0.20-0.65	1.0									
JMW-7.5APM	0.35-1.17	0.8	7.5	10	57±2	3/4"	2.0	10	800*800*1200	3/4"	510
	0.30-1.05	1.0									
	0.24-0.81	1.25									
JMW-11APM	0.51-1.72	0.8	11	15	60±2	1"	2.5	26	1200*855*1335	3/4"	620
	0.45-1.42	1.0									
	0.35-1.25	1.25									
JMW-15APM	0.75-2.43	0.8	15	20	60±2	1"	3.5	26	1200*855*1335	1"	670
	0.65-2.17	1.0									
	0.60-1.80	1.25									
JMW-18.5APM	0.90-2.82	1.0	###	25	62±2	1"	4.0	30	1400*1010*1340	1"	730
	0.60-2.05	1.25									
	1.10-3.70	0.8									
JMW-22APM	0.97-3.21	1.0	22	30	62±2	1"	5.0	30	1400*1010*1340	1"	780
	0.85-2.78	1.25									
	1.55-5.20	0.8									
JMW-30APM	1.23-4.43	1.0	30	40	65±2	1 1/2"	7.0	40	1650*1180*1505(A) 1500*1080*1300(W)	1 1/2"	1150
	1.10-3.63	1.25									
	1.91-6.50	0.8									
JMW-37APM	1.60-5.33	1.0	37	50	65±2	1 1/2"	9.0	40	1650*1180*1505(A) 1500*1080*1300(W)	1 1/2"	1200
	1.42-4.77	1.25									
	2.50-8.30	0.8									
JMW-45APM	1.91-6.30	1.0	45	60	68±2	1 1/2"	10.0	90	1800*1360*1670	2"	1490
	1.705.56	1.25									
	3.00-10.30	0.8									
JMW-55APM	2.60-8.55	1.0	55	75	70±2	1 1/2"	12.0	100	1800*1360*1670	2"	1570
	2.30-7.67	1.25									
	3.95-13.00	0.8									
JMW-75APM	3.40-11.50	1.0	75	100	70±2	1 1/2"	18.0	100	1800*1360*1670	2"	1750
	3.00-9.70	1.25									
	5.00-16.60	0.8									
JMW-90APM	4.30-14.66	1.0	90	120	70±2	1 1/2"	20.0	120	2200*1550*1800	2 1/2"	2450
	3.72-12.60	1.25									
	6.00-20.20	0.8									
JMW-110APM	5.00-16.66	1.0	110	150	75±2	2"	24.0	120	2200*1550*1800	2 1/2"	2580
	4.66-15.56	1.25									
	6.75-22.52	0.8									
JMW-132APM	6.00-19.97	1.0	132	180	75±2	2"	30.0	120	2200*1550*1800	2 1/2"	2700
	5.07-16.90	1.25									
	8.50-28.11	0.8									
JMW-160APM	7.60-25.45	1.0	160	220	80±2	3"	35.0	160	3000*1800*2100	3"	3900
	6.70-22.52	1.25									
	10.00-33.97	0.8									
JMW-185APM	8.72-29.00	1.0	185	250	80±2	3"	38.0	160	3000*1800*2100	3"	4050
	7.75-25.21	1.25									
	11.20-36.75	0.8									
JMW-200APM	9.68-32.78	1.0	200	270	80±2	4"	42.0	200	3100*1850*2100	4"	4200
	9.20-29.25	1.25									
	12.20-39.67	0.8									
JMW-220APM	11.20-36.75	1.0	220	300	80±2	4"	47.0	200	3100*1850*2100	4"	4400
	9.00-29.63	1.25									
	13.50-45.00	0.8									
JMW-250APM	12.30-39.67	1.0	250	340	80±2	4"	53.0	200	3100*1850*2100	4"	4800
	10.20-33.97	1.25									



Low Pressure Oil-free Screw Air Compressor (30-185KW)

Model	Air Capacity	Pressure	Power		Noise	Cooling water outlet	Cooling water	Lubricated water	Dimension	Outlet	Weight
	m3/min	Mpa	KW	HP	DB	Ton/Hour	L	L*W*H	KG		
JMW-30A	6.70	0.4	30	40	65±2	1 1/2"	7	50	1650*1180*1505(A) 1500*1080*1300(W)	2"	1200
JMW-37A	8.60	0.4	37	50	65±2	1 1/2"	9	60	1650*1180*1505(A) 1500*1080*1300(W)	2 1/2"	1300
JMW-45W	10.50	0.4	45	60	68±2	1 1/2"	10	120	1800*1360*1670	2 1/2"	1500
JMW-55W	13.50	0.4	55	75	68±2	1 1/2"	12	160	1800*1360*1670	2 1/2"	1670
JMW-75W	19.90	0.4	75	100	70±2	1 1/2"	18	160	1800*1360*1670	3"	1800
JMW-90W	23.00	0.4	90	120	72±2	1 1/2"	20	180	2200*1550*1800	3"	2550
JMW-110W	28.20	0.4	110	150	75±2	2"	24	180	2200*1550*1800	4"	2600
JMW-132W	30.00	0.4	132	180	75±2	2"	30	180	2200*1550*1800	4"	2800
JMW-160W	36.00	0.4	160	220	78±2	3"	35	230	3000*1800*2100	5"	4000
JMW-185W	42.00	0.4	185	250	78±2	3"	38	230	3000*1800*2100	5"	4350

Middle Pressure Oil-free Screw Air Compressor (37-460KW)

Model	Air Capacity	Pressure	Power		Noise	Cooling water outlet	Cooling water	Lubricated water	Dimension	Outlet	Weight
	m3/min	Mpa	KW	HP	DB	Ton/Hour	L	L*W*H	KG		
JMW-37W	3.50	4.0	37	50	65±2	1"	10	80	1800*1360*1710	1"	1200
JMW-65W	6.00	4.0	65	90	70±2	1 1/2"	18	120	1800*1360*1710	1"	1800
JMW-110W	10.00	4.0	110	150	70±2	2"	28	160	3000*1560*1680	1 1/2"	2260
JMW-132W	12.00	4.0	132	175	72±2	2"	35	170	3000*1800*2100	1 1/2"	2500
JMW-165W	15.00	4.0	165	220	75±2	2 1/2"	40	190	3000*1800*2100	2"	2980
JMW-220W	20.00	4.0	220	300	75±2	3"	50	200	3000*2100*2200	2"	3200
JMW-275W	25.00	4.0	275	375	78±2	3"	56	250	3600*2100*2200	2 1/2"	4600
JMW-460W	42.00	4.0	460	615	80±2	4"	90	360	4200*3600*2200	3"	5800

Oil-free Screw Air Compressor for Special Purpose



Characteristics of the latest generation of water lubricated oil-free screw air compressor

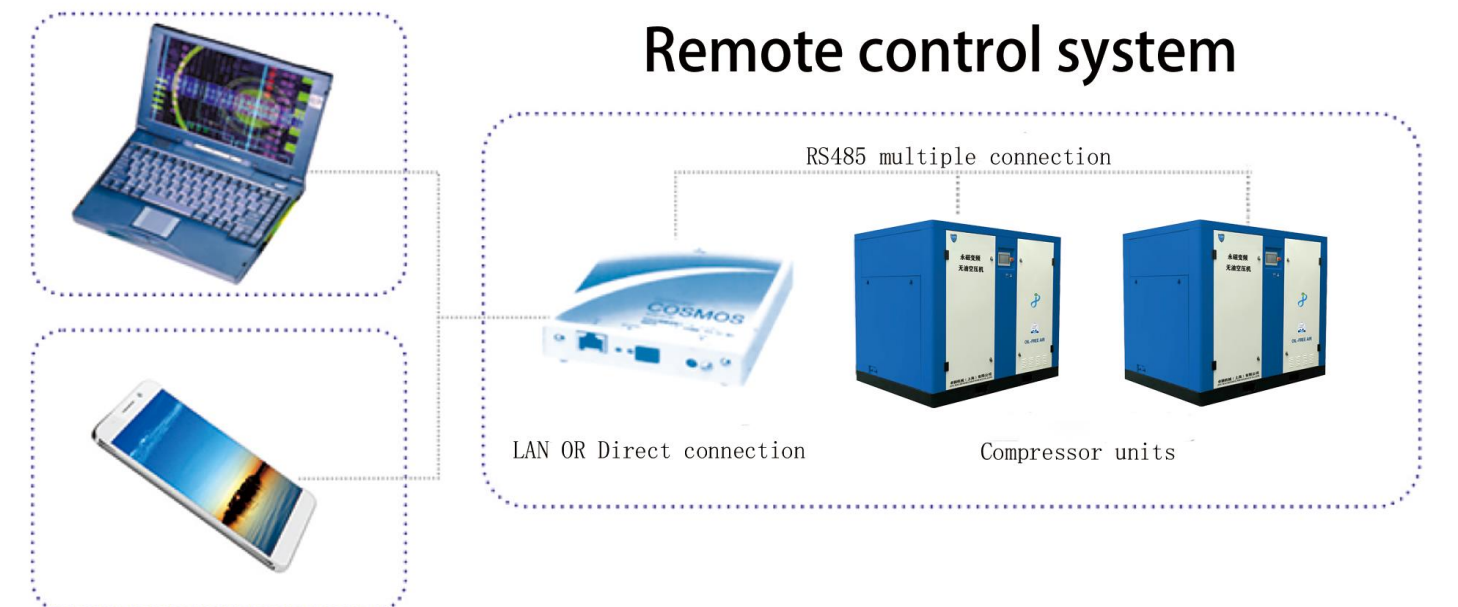
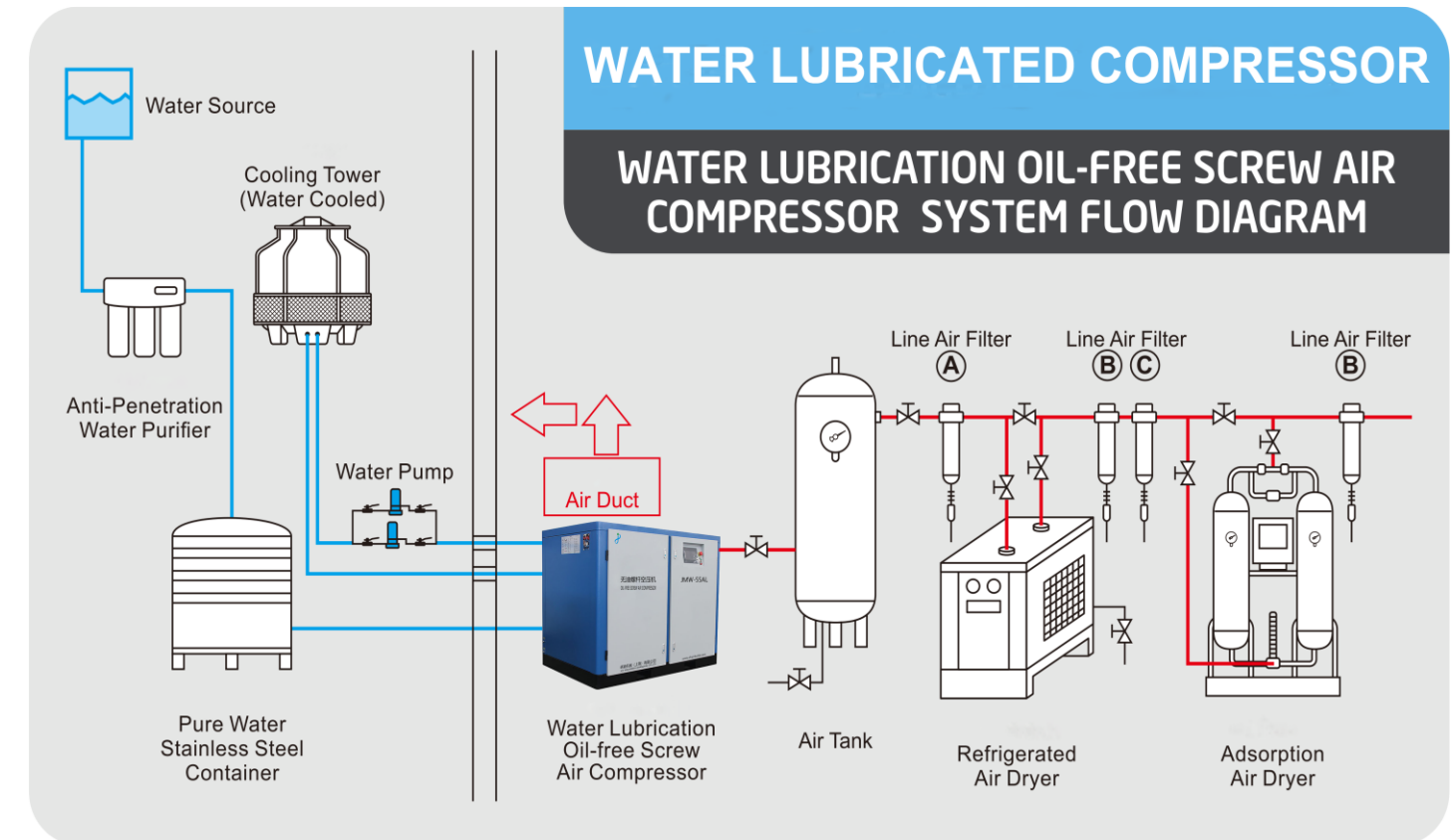
- Low temperature characteristics of close to isothermal compression (the temperature of air end is lower than 60°C);
- Full stainless steel air end (air end screw, air end casing are both stainless steel material) corrosion resistance characteristics;
- High efficiency full seal system (adopting imported mechanical seal, and labyrinth seal) without potential leakage;
- There is no direct contact between metals when the compressor air end runs;

Adopting pure water to seal, lubricate, cool air end, which can adapt to the requirements of various gas compressors, especially for the requirements of explosive-proof gas compressor;

With our own intellectual property rights, all kinds of gas compressors can be made according to the requirements of our customers;

Totally stainless steel air end with independent patents;

Achievements: Gasoline gas compressors, methane compressors, nitrogen compressors, oxygen compressors and other special gas compressors have been successfully developed and applied.





Dry Oil-free Screw Air Compressor (5.5-250KW)

Main components



Optional: Industry leading GHH oil-free air end / domestic air end

The air compression chamber and the oil chamber are completely separated and do not come into contact with each other.

The rotors are made of stainless steel material, which is more reliable.

The rotor and compression chamber walls of the air end is coated with industry-leading super coating (UITRACOAT). It can effectively prevent from softening, peeling and other phenomena that are prone to occur when using general coatings such as Teflon. excellent anti-corrosion properties and reduces meshing gaps.



Permanent magnet variable frequency control system

Large size color LCD touch screen with excellent human-machine communication interface;

Customized vector frequency converter, perfectly matched with the motor;

A dedicated program that fully monitors the various parameters of the machine, automatically controls the machine status, and does not require dedicated supervision;

Independent air duct design, suitable for various working conditions.



Independent air intake system

Independent air intake ensures that the intake temperature is equal to the ambient temperature.

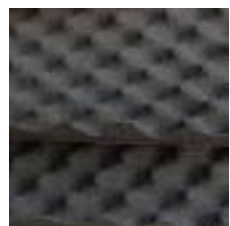
Choosing a large surplus air filter results in better filtration efficiency, lower intake pressure loss, and energy efficiency.

Maintenance and replacement are more convenient.



Noise reduction sheet metal design

Multiple noise reduction design, calculated based on noise theory, with dedicated flame-retardant sound-absorbing cotton pasted inside to reduce unit noise and provide a quieter usage environment.



Silent centrifugal fan

The dry oil-free screw air compressor adopts the latest centrifugal fan with large cooling air volume, low noise, stable and uniform air pressure, which fully utilizes the cooling area of the cooler and significantly reduces the noise level.



Efficient water cooler

The tube nest is a new type of plum blossom shaped copper tube, which has the following advantages over conventional water-cooled heat exchangers:

The cooling water flows through the shell side and passes through multiple sets of baffle components, which increases the turbulence level and reduces the probability of dirt formation on the pipe wall, thereby reducing maintenance costs for users;

The gas flows through the tube and the fins extend axially inside the tube, making it safe and reliable to use, and the fins are not easily detached;

The tube nest can be independently disassembled, making it convenient for users to maintain and upkeep;

Compressed air flows through the pipe and water flows through the shell to reduce the noise generated by compressed air.



Noise reducing Venturi tube

The first and second stage engines of the air compressor are equipped with the latest developed Venturi tube muffler, as well as an impedance integrated muffler, which can greatly eliminate the noise emitted by the compressor pipeline.



Reliable intake system

Efficient intake valve ensures more stable and reliable operation, avoiding regular replacement of pneumatic components and reducing unnecessary downtime and maintenance costs.



Fixed Frequency Dry Oil-free Screw air compressor (37-315KW)

Adopting German technology (domestic airend optional), it is a highly environmentally friendly and energy-efficient dry oil-free screw compressor certified by TUV CLASS 0.



Imported air end from German China air end



Totally stainless steel design



TUV Rheinland Level 0 Oil Free Certification



Efficient gas water separation



YE5 high-efficiency motor



Air consumption free oil mist separation



Low pressure loss, large air filter design



Design of Silent Centrifugal Fan



Product Feature

- Motor Power :37-315 KW
- Discharge delivery: 5.60-52.50 m3/min
- Discharge Pressure: 0.7-1.0 Mpa

TECHNICAL PARAMETERS

Model	JMWD-37A	JMWD-45A	JMWD-55A	JMWD-75A	JMWD-90A	JMWD-110A	JMWD-132A								
Capacity/Pressure (m3/min/Mpa)	---/0.7	7.80/0.7	9.80/0.7	13.00/0.7	16.00/0.7	20.60/0.7	24.80/0.7								
	5.60/0.8	6.80/0.8	9.00/0.8	12.20/0.8	13.80/0.8	19.50/0.8	23.00/0.8								
	---/1.0	6.40/1.0	7.80/1.0	11.20/1.0	13.10/1.0	18.80/1.0	19.50/1.0								
	---/1.3	---/1.3	---/1.3	---/1.3	---/1.3	---/1.3	---/1.3								
Motor	Power (KW)	37	45	55	75	90	132								
	Power (HP)	50	60	75	100	120	175								
	Voltage/Hz	380V/3Ph/50Hz, Special voltage can be customized													
	Start	Y-Δ Start													
Noise DB (A)	72±2	72±2	72±2	75±2	75±2	75±2	80±2								
Working Temp(°C)	-5°C ~ +45°C														
Discharge Air Temp(°C)	≤ Ambient temperature +15 °C														
Size	Length(mm)	2000	2200	2000	2200	2000	2200	2200	2200	2200	2200	3000	2800	3000	2800
	Weight(mm)	1300	1500	1300	1500	1300	1500	1400	1500	1400	1500	1990	1900	1990	1900
	Height(mm)	1820	1720	1820	1720	1820	1720	2000	1720	2000	1720	2180	1990	2180	1990
Outlet (Inch)	G1 1/2"		G1 1/2"		G1 1/2"		DN50		DN50		DN65		DN65		
Weight(KG)	1800	1950	1800	1850	1900	1950	2000	2050	2100	2150	3100	3150	3200	3250	
Cooled way	Air	Water	Air	Water	Air	Water	Air	Water	Air	Water	Air	Water	Air	Water	

Model	JMWD-160A	JMWD-185A	JMWD-200A	JMWD-220A	JMWD-250A	JMWD-280A	JMWD-315A								
Capacity/Pressure (m3/min/Mpa)	28.50/0.7	32.80/0.7	36.80/0.7	41.50/0.7	46.00/0.7	48.60/0.7	52.50/0.7								
	26.30/0.8	28.90/0.8	34.60/0.8	37.30/0.8	42.80/0.8	47.50/0.8	50.60/0.8								
	23.80/1.0	27.50/1.0	30.60/1.0	33.00/1.0	38.20/1.0	45.00/1.0	48.50/1.0								
	---/1.3	---/1.3	---/1.3	---/1.3	---/1.3	---/1.3	---/1.3								
Motor	Power (KW)	160	185	200	220	250	315								
	Power (HP)	215	250	270	300	350	420								
	Voltage/Hz	380V/3Ph/50Hz, Special voltage can be customized													
	Start	Y-Δ Start													
Noise DB (A)	80±2	80±2	82±2	82±2	82±2	82±2	82±2								
Working Temp(°C)	-5°C ~ +45°C														
Discharge Air Temp(°C)	≤ Ambient temperature +15 °C														
Size	Length(mm)	3000	2800	3000	2800	4500	3100	4500	3100	4500	3100	4500	3100	4500	3100
	Weight(mm)	1990	1900	1990	1900	2000	2200	2000	2200	2000	2200	2000	2200	2000	2200
	Height(mm)	2180	1990	2180	1990	2150	2105	2150	2105	2150	2105	2150	2105	2150	2105
Outlet (Inch)	DN65		DN65		DN100		DN100		DN100		DN100		DN100		
Weight(KG)	3300	3400	3400	3500	5570	5000	5600	5100	5800	5200	5900	5300	6000	5400	
Cooled way	Air	Water	Air	Water	Air	Water	Air	Water	Air	Water	Air	Water	Air	Water	



PM Dry Oil-free Screw air compressor (37-315KW)

Adopting German technology (domestic airend optional), it is a highly environmentally friendly and energy-efficient dry oil-free screw compressor certified by TUV CLASS 0.



Imported air end from German
China air end



Totally stainless steel design



TUV Rheinland Level 0 Oil Free
Certification



Efficient gas water separation



YE5 high-efficiency motor



Air consumption free oil mist separation



Low pressure loss, large air filter design



Design of Silent Centrifugal Fan



Product Feature

- Motor Power :37-315 KW
- Discharge delivery: 5.60-52.50 m3/min
- Discharge Pressure: 0.7-1.0 Mpa

TECHNICAL PARAMETERS														JOY MACHINERY (SHANGHAI) CO.,LTD.			
Model	JMWD-37APM	JMWD-45APM	JMWD-55APM	JMWD-75APM	JMWD-90APM	JMWD-110APM	JMWD-132APM										
Capacity/Pressure (m3/min/Mpa)	0.7	4.50-7.80/0.7	5.70-9.80/0.7	7.60-13.00/0.7	9.60-16.00/0.7	12.10-20.60/0.7	14.70-24.80/0.7										
	0.8	3.60-5.60/0.8	4.00-6.80/0.8	5.20-9.00/0.8	7.20-12.20/0.8	8.10-13.80/0.8	11.60-19.50/0.8	13.60-23.00/0.8									
	1.0	3.70-6.40/1.0	4.40-7.80/1.0	6.60-11.20/1.0	7.60-13.10/1.0	11.10-18.80/1.0	11.50-19.50/1.0										
	1.3	---	---	---	---	---	---										
Motor	Power (KW)	37	45	55	75	90	110	132									
	Power (HP)	50	60	75	100	120	150	175									
	Voltage/Hz	380V/3Ph/50Hz, Special voltage can be customized															
	Start	VSD Start															
Noise DB (A)	70±2	70±2	70±2	75±2	75±2	75±2	80±2										
Working Temp(°C)	-5°C ~ +45°C																
Discharge Air Temp(°C)	≤ Ambient temperature +15 °C																
Size	Length(mm)	2000	2200	2000	2200	2000	2200	2000	2200	2000	2200	3000	2800	3000	2800		
	Weight(mm)	1300	1500	1300	1500	1300	1500	1400	1500	1400	1500	1990	1900	1990	1900		
	Height(mm)	1820	1720	1820	1720	1820	1720	2000	1720	2000	1720	2180	1990	2180	1990		
Outlet (Inch)	G1 1/2"		G1 1/2"		G1 1/2"		DN50		DN50		DN65		DN65				
Weight(KG)	1800	1950	1800	1850	1900	1950	2000	2050	2100	2150	3100	3150	3200	3250			
Cooled way	Air	Water	Air	Water	Air	Water	Air	Water	Air	Water	Air	Water	Air	Water			

Model	JMWD-160APM	JMWD-185APM	JMWD-200APM	JMWD-220APM	JMWD-250APM	JMWD-280APM	JMWD-315APM								
Capacity/Pressure (m3/min/Mpa)	0.7	16.90-28.50/0.7	19.50-32.80/0.7	21.80-36.80/0.7	24.90-41.50/0.7	27.30-46.00/0.7	31.60-48.60/0.7	34.10-52.50/0.7							
	0.8	15.60-26.30/0.8	17.10-28.90/0.8	20.40-34.60/0.8	22.40-37.30/0.8	25.30-42.80/0.8	30.90-47.50/0.8	32.90-50.60/0.8							
	1.0	14.10-23.80/1.0	16.30-27.50/1.0	18.10-30.60/1.0	19.80-33.00/1.0	22.70-38.20/1.0	29.30-45.00/1.0	31.50-48.50/1.0							
	1.3	---	---	---	---	---	---	---							
Motor	Power (KW)	160	185	200	220	250	280	315							
	Power (HP)	215	250	270	300	350	375	420							
	Voltage/Hz	380V/3Ph/50Hz, Special voltage can be customized													
	Start	VSD Start													
Noise DB (A)	80±2	80±2	82±2	82±2	82±2	82±2	82±2								
Working Temp(°C)	-5°C ~ +45°C														
Discharge Air Temp(°C)	≤ Ambient temperature +15 °C														
Size	Length(mm)	3000	2800	3000	2800	4500	3100	4500	3100	4500	3100	4500	3100	4500	3100
	Weight(mm)	1990	1900	1990	1900	2000	2200	2000	2200	2000	2200	2000	2200	2000	2200
	Height(mm)	2180	1990	2180	1990	2150	2105	2150	2105	2150	2105	2150	2105	2150	2105
Outlet (Inch)	DN65		DN65		DN100		DN100		DN100		DN100		DN100		
Weight(KG)	3300	3400	3400	3500	5570	5000	5600	5100	5800	5200	5900	5300	6000	5400	
Cooled way	Air	Water	Air	Water	Air	Water	Air	Water	Air	Water	Air	Water	Air	Water	



Diesel Portable Screw Air Compressor (45-475KW)



Product Features

Stable design with direct connection, the operation is stable and reliable with low noise,

No need for dedicated personnel to guard.

An independent oil and gas cooling system ensures lower operating temperatures for the main engine.

Electric mobile screw air compressors are widely used in heavy industries such as mining, urban construction, road construction, sandblasting, etc., and are easily accessible to power sources.

TECHNICAL PARAMETERS

Model	Power(KW/HP)	Capacity(m3/min)	Pressure (Mpa)	Outlet	L*W*H (mm)	Weight(KG)	Note
JMCY-4/8	45/60	4	0.8	G1-1/4"	2300*1760*1900	820	2 wheels
JMCY-7/8	58/78	7	0.8	G1-1/4"	2900*1800*2100	960	
JMCY-10/8	70/92	10	0.8	G1-1/2"	2900*1800*2100	1250	
JMCY-12/8	92/123	12	0.8	G1-1/2"	2900*1850*2100	1300	
JMCY-10/10	92/123	10	1	G1-1/2"	2900*1850*2100	1300	
JMCY-15/8	110/150	15	0.8	G2"	2900*1850*2100	1500	
JMCY-10/13	118/157	10	1.3	G2"	2900*1850*2100	1600	
JMCY-13/10	118/157	13	1	G2"	2900*1850*2100	1600	
JMCY-17/8	132/180	17	0.8	G2"	2900*1850*2100	1760	
JMCY-13/13	132/180	13	1.3	G2"	2900*1850*2100	1700	
JMCY-15/13	140/187	15	1.3	G2"	2900*1850*2100	1700	
JMCY-22/8	160/215	22	0.8	G2"	3400*1880*2100	1700	
JMCY-20/13	194/259	20	1.3	G2"	3400*1880*2100	1900	
JMCY-26/8	194/259	26	0.8	G2"	3400*1880*2100	1900	
JMCY-30/8	210/280	30	0.8	G2"	3400*1880*2100	2100	
JMCY-13/17-II	150/200	13	1.7	G2"	3400*1860*2100	1960	
JMCY-18/17-II	194/259	18	1.7	G2"	3400*1860*2100	2200	
JMCY-10/20-II	132/160	10	2	G2"	3200*1860*2100	1850	
JMCY-27/20-II	295/393	27	2	G2"	3700*2100*2500	2600	
JMCY-31/20-II	350/467	31	2	G2"	3700*2100*2500	3500	
JMCY-21/21-II	239/319	21	2.1	G2"	3700*2100*2400	2600	
JMCY-15/25-II	239/319	15	2.5	G2"	3700*2100*2400	2600	
JMCY-20/25-III	264/352	20	2.5	G2"	3700*2100*2400	2600	
JMCY-33/25-III	410/547	33	2.5	G2"	4200*2200*2300	3500	
JMCY-35/30-II	475/633	35	3	G2"	4200*2200*2300	3500	
JMCY-32/45-III	475/633	32	4.5	G2"	4900*2300*2200	4800	

Electrical Portable Screw Air Compressor (37-220KW)

Product Features

Stable design with direct connection, the operation is stable and reliable with low noise, No need for dedicated personnel to guard.

An independent oil and gas cooling system ensures lower operating temperatures for the main engine.



Electric mobile screw air compressors are widely used in heavy industries such as mining, urban construction, road construction, sandblasting, etc., and are easily accessible to power sources.

TECHNICAL PARAMETERS

Model	Power(KW/HP)	Capacity(m3/min)	Pressure (Mpa)	Outlet	L*W*H (mm)	Weight(KG)	Note
JMDY-6/8	37/45	6	8	2-RP3/4	3069*1570*1395	1300	2 wheels
JMDY-7.5/8	45/60	7.5	8		3069*1570*1395	1400	
JMDY-10/8	55/75	10	8	RP1 1/4 2-RP3/4	3530*1980*1887	1700	
JMDY-7.5/13		7.5	13		3530*1980*1887	1700	
JMDY-14/7	75/100	14	7		3300*1980*1831	1900	
JMDY-13/8		13	8		3530*1980*1887	2000	
JMDY-10/13		10	13		3530*1980*1887	1950	
JMDY-16/8		16	8		3530*1980*1887	2500	
JMDY-13/14.5	90/125	13	14.5	3530*1980*1887	2400		
JMDY-20/8	110/150	20	8	2-RP2 2-RP3/4	3700*1980*1940	3000	
JMDY-17/13		17	13		3700*1980*1940	2900	
JMDY-22/8	132/180	22	8		3700*1980*1940	3200	
JMDY-17/14.5		17	14.5	3700*1980*1940	3100		
JMDY-21/13	160/220	21	13	1-RP2 2-RP1 1/4	3670*1820*2250	3900	
JMDY-26/8		26	8		3670*1820*2250	3900	
JMDY-18/17		18	17		3670*1820*2250	3800	
JMDY-30/8	185/250	30	8	3670*1820*2250	4300		
JMDY-26/13	220/300	26	13	1-RP2 1-RP1	4200*1950*2350	4900	

Miniature Electrical portable screw air compressor (2.2-7.5KW)



Product Feature

- Motor Power :2.2-7.5 KW
- Discharge delivery: 0.30-10.00 m3/min
- Discharge Pressure: 0.8-1.25 Mpa

Using high-quality airend and motor, stable operation, low failure rate
Equipped with a built-in air tank and wheels on the body, it is easy to move and use, and can replace piston engines

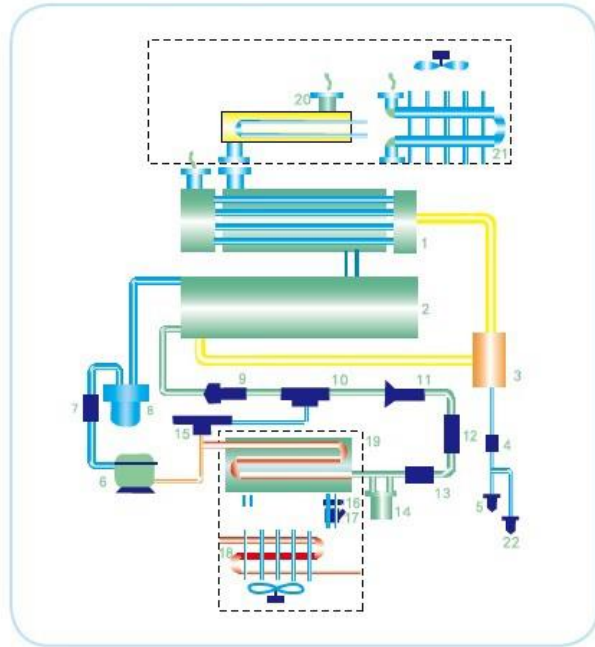
TECHNICAL PARAMETERS

Model	Power (KW/HP)	Voltage (V/Hz)	Capacity (m³/min)	Pressure (Mpa)	Tank volume (L)	Noise level (DB)	Cooled way	L*W*H (mm)		
JMDY-4/10D	2.2/4	220/50	0.3	0.8-1.0	90	78±2	Air cooled	940*365*940		
JMDY-4/10S		380/50	0.3	0.8-1.0						
JMDY-5.5/10D	4.5/6	220/50	0.55	0.8-1.0	120			78±2	Air cooled	1060*420*1020
JMDY-5.5/10S		380/50	0.55	0.8-1.0						
JMDY-7.5/10S	5.5/7.5	380/50	0.7	0.8-1.0						
JMDY-10/10S	7.5/10	380/50	1.0	0.8-1.0						
JMDY-10/12.5S		380/50	0.8	1.1-1.25						
JMDY-10YPM/10S		380/50	1.0	0.8-1.0						
JMDY-10YPM/10D		220/50	1.0	0.8-1.0						
JMDY-10YPM/12.5D		220/50	0.8	1.1-1.25						



Compressed air purification equipment Refrigerated Air Dryer

Process flow chat of refrigerated air dryer



- 1、 Heat exchanger
- 2、 Evaporator
- 3、 Gas/liquid separator
- 4、 Jam-prevent drain filter
- 5、 Manual draining valve
- 6、 Refrigerated compressor
- 7、 Aspirating filter
- 8、 Vaporization
- 9、 Separator
- 10、 Gas/liquid mixer
- 11、 Thermal expansion valve
- 12、 View monitor
- 13、 Dry filter
- 14、 Tank
- 15、 Hot gas by-pass valve
- 16、 Water adjustable valve
- 17、 Water filter
- 18、 Condenser(Air-cooling)
- 19、 Condenser(Water-cooling)
- 20、 Per-cooler(Water-cooling)
- 21、 Per-cooler(Air-cooling)
- 22、 Auto-drainer

Standard Working Condition

Cooling Way	风冷 Air-cooled
Capacity	1.2-65 m3/min
Power (KW)	0.85-13
Inlet air temperature	≅ 45°C (Standard type) ≅ 80°C (High TEMP)
Ambient temperature	≅ 45°C
Pressure dew point	2-10°C
Inlet air pressure	0.4-1.3 Mpa
Pressure drop	≅ 3% of the working pressure
Refrigerant	R22/R134A/R407C

Standard Working Condition

Cooling Way	Water-cooled
Capacity	11-300 m3/min
功率 Power (KW)	2.5-60
Inlet air temperature	≅ 45°C (Standard type) ≅ 80°C (High TEMP)
Ambient temperature	≅ 45°C
Pressure dew point	2-10°C
Inlet air pressure	0.4-1.3 Mpa
Pressure drop	≅ 3% of the working pressure
Refrigerant	R22/R134A/R407C
Cooling water Inlet pressure	0.2-0.4 Mpa

A refrigerated air dryer lowers the temperature of the compressed air, forcing moisture to condense out. This is lowering the dew point of the air. Especially suitable for the areas free of water or short of water resources.

Our air dryer can handle temperatures up to 80°C which will work well with any air compressor.

A refrigerated air dryer lowers the temperature of the compressed air, forcing moisture to condense out. This is lowering the dew point of the air. Especially suitable for the areas enough for water resources.

Our air dryer can handle temperatures up to 80°C which will work well with any air compressor.

Normal / High Temperature Air-cooling Refrigerated Air Dryer



Working Condition and Technical Parameters

Inlet temperature: ≅ 45°C (≅ 80°C) Pressure drop: ≅ 0.03 Mpa
Cooling method: 风冷 Air cooling Dew point: 2~10°C
Inlet pressure: 0.4~1.0 Mpa Refrigerant: R22

TECHNICAL PARAMETERS

Model	JMAD-1N/HTA	JMAD-2N/HTA	JMAD-3N/HTA	JMAD-5N/HTA	JMAD-6N/HTA	JMAD-8N/HTA	JMAD-10N/HTA	JMAD-12N/HTA	JMAD-15N/HTA	JMAD-20N/HTA	JMAD-25N/HTA	JMAD-30N/HTA	JMAD-40N/HTA	JMAD-50N/HTA	JMAD-60N/HTA	JMAD-80N/HTA	JMAD-100N/HTA	
Air Capacity m3/min	1.5	2.5	3.5	5.5	6.5	8.5	11.5	13.5	16.5	22	27	35	45	55	65	85	110	
Voltage/Hz	220V/1Ph/50Hz								380V/3Ph/50Hz									
Compressor Power(KW)	0.5	0.7	0.9	1.0	1.0	1.6	2.0	3.0	3.1	4.5	4.5	6.9	9.2	11	14	18	20	
Fan Power (W)	80	95	120	240	240	300	380	420	480	600	600	750	1080	2020	2020	1560	3330	
Inlet/outlet Caliber	ZG1	ZG1	ZG1.5	ZG1.5	ZG1.5	ZG2	ZG2.5	ZG2.5	ZG2.5	DN80	DN80	DN100	DN100	DN125	DN125	DN150	DN150	
Size	Length(mm)	665	750	800	923	923	995	1125	1125	1120	1300	1300	1600	1800	1900	1900	2500	2800
	Width(mm)	425	420	440	500	500	585	625	625	700	750	750	820	820	900	900	1000	1000
	Height(mm)	560	730	800	910	910	1080	1045	1045	1230	1230	1230	1520	1560	1570	1570	1900	2100
Weight(KG)	37	45	60	76	80	90	120	150	190	260	280	390	420	560	560	680	850	

Normal / High Temperature Water-cooling Refrigerated Air Dryer



Working Condition and Technical Parameters

Inlet temperature: ≅ 45°C (≅ 80°C) Pressure drop: ≅ 0.03 Mpa
Cooling method: 水冷 Water cooling Dew point: 2~10°C
Inlet pressure: 0.4~1.0 Mpa Refrigerant: R22
Cooling water inlet temperature:

TECHNICAL PARAMETERS

Model	JMAD-13N/HTW	JMAD-15N/HTW	JMAD-20N/HTW	JMAD-25N/HTW	JMAD-30N/HTW	JMAD-40N/HTW	JMAD-50N/HTW	JMAD-60N/HTW	JMAD-80N/HTW	JMAD-100N/HTW	JMAD-150N/HTW	JMAD-200N/HTW	JMAD-300N/HTW	
Air Capacity m3/min	13.5	16.5	22	25	35	45	55	65	85	110	160	210	300	
Voltage/Hz	380V/3Ph/50Hz													
Compressor Power KW	3.0	3.1	4.5	5.3	6.9	9.2	11.2	14	18	20	30	37	45	
Cooled water m3/h	5	6	7	9	11	15	20	22	25	30	40	50	80	
Cooled Water Pipe Caliber	DN20	DN25	DN25	DN32	DN32	DN45	DN45	DN45	DN50	DN50	DN65	DN80	DN100	
Inlet/outlet Caliber	ZG2.5"	DN65	DN80	DN80	DN100	DN100	DN100	DN125	DN125	DN150	DN200	DN200	DN250	
Size	Length(mm)	1125	1120	1300	1300	1600	1800	1900	1900	2500	2800	3300	3800	4000
	Width(mm)	625	700	750	750	820	820	900	900	1000	1000	1750	1750	2000
	Height(mm)	1045	1230	1230	1230	1520	1560	1570	1570	1900	2100	2000	2000	2200
Weight(KG)	160	210	280	300	410	450	530	590	730	900	1400	1700	2000	

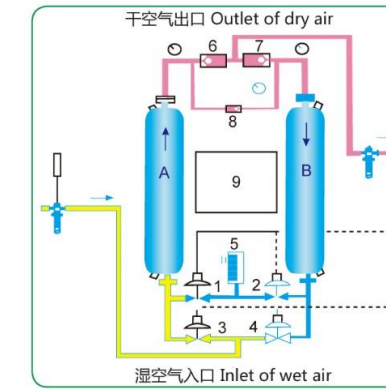


Heatless regenerative adsorption Air Dryer



Working Condition and Technical Parameters

Purge air: $\leq 12 \sim 15\%$
 Working pressure: $0.6 \sim 1.0\text{Mpa}$
 Inlet oil content: $\leq 0.01\text{ppm}$
 Pressure dew point: $-20 \sim -40^\circ\text{C}$
 Desiccant: Activated aluminum or Molecular sieve
 Working period: $T=4 \sim 20$ Minutes
 Inlet temperature: $0 \sim 45^\circ\text{C}$



- A、B Absorption tower
- 1、2、3、4 Switch valve
- 5、 Silencer
- 6、7 Check valve
- 8 Throttle
- 9 Program controller

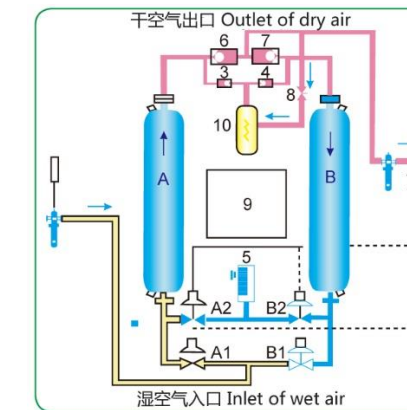
TECHNICAL PARAMETERS		JOY MACHINERY (SHANGHAI) CO.,LTD.																						
Item	Model	JMAD-1WXA	JMAD-2WXA	JMAD-3WXA	JMAD-6WXA	JMAD-8WXA	JMAD-10WXA	JMAD-12WXA	JMAD-15WXA	JMAD-20WXA	JMAD-25WXA	JMAD-30WXA	JMAD-40WXA	JMAD-50WXA	JMAD-60WXA	JMAD-80WXA	JMAD-100WXA	JMAD-120WXA	JMAD-150WXA	JMAD-200WXA	JMAD-250WXA	JMAD-300WXA	JMAD-350WXA	JMAD-400WXA
Air Capacity m ³ /min		1.5	2.5	3.8	6.8	8.5	11.5	13.5	17.0	23.0	27.0	34.0	45.0	55.0	65.0	87.0	110.0	130.0	160.0	210.0	260.0	310.0	360.0	410.0
Inlet/outlet Caliber		ZG1"	ZG1"	ZG1"	ZG1 1/2"	ZG2"	ZG2"	ZG2"	DN65	DN65	DN80	DN80	DN100	DN100	DN100	DN125	DN150	DN150	DN200	DN200	DN250	DN250	DN300	DN300
Size	Length(mm)	750	750	1050	1050	1100	1100	1200	1200	1400	1400	1500	1700	1800	1900	2000	2200	2500	2600	2900	3000	3300	3700	4000
	Width(mm)	350	350	500	500	550	550	500	500	500	500	600	800	900	900	900	1000	1200	1500	1600	1800	2000	2100	2700
	Height(mm)	1450	1600	1500	1850	1850	2000	2100	2300	2100	2450	2350	2400	2600	2700	2700	2800	2800	2850	2900	3000	3000	3000	3100
Weight(KG)		100	110	210	300	360	390	500	600	700	920	1050	1200	1500	1700	2200	2700	4100	4900	6400	7700	9020	11900	13100

Heated regenerative adsorption Air Dryer



Working Condition and Technical Parameters

Purge air: $\leq 4 \sim 6\%$
 Working pressure: $0.6 \sim 1.0\text{Mpa}$
 Inlet oil content: $\leq 0.01\text{ppm}$
 Pressure dew point: $-20 \sim -70^\circ\text{C}$
 Desiccant: Activated aluminum or Molecular sieve
 Working period: $T=60 \sim 180$ Minutes
 Inlet temperature: $0 \sim 45^\circ\text{C}$



- A、B Absorption tower
- A1、A2、B1、B2 Switch valve
- 5、 Silencer
- 3、4、6、7 Check valve
- 8 Throttle
- 9 Program controller
- 10 Heating element

TECHNICAL PARAMETERS		JOY MACHINERY (SHANGHAI) CO.,LTD.																						
Item	Model	JMAD-1MXA	JMAD-2MXA	JMAD-3MXA	JMAD-6MXA	JMAD-8MXA	JMAD-10MXA	JMAD-12MXA	JMAD-15MXA	JMAD-20MXA	JMAD-25MXA	JMAD-30MXA	JMAD-40MXA	JMAD-50MXA	JMAD-60MXA	JMAD-80MXA	JMAD-100MXA	JMAD-120MXA	JMAD-150MXA	JMAD-200MXA	JMAD-250MXA	JMAD-300MXA	JMAD-350MXA	JMAD-400MXA
Air Capacity m ³ /min		1.5	2.5	3.8	6.8	8.5	11.5	13.5	17.0	23.0	27.0	34.0	45.0	55.0	65.0	87.0	110.0	130.0	160.0	210.0	260.0	310.0	360.0	410.0
Inlet/outlet Caliber		ZG1"	ZG1"	ZG1"	ZG1 1/2"	ZG2"	ZG2"	ZG2"	DN65	DN65	DN80	DN80	DN100	DN100	DN100	DN125	DN150	DN150	DN200	DN200	DN250	DN250	DN300	DN300
Heater power (KW)		0.5	1	1.2	2.1	3	4	4	5	6	8	10	12	15	18	27	36	42	54	72	90	113	124.8	145.8
Size	Length(mm)	750	750	1050	1050	1100	1100	1200	1200	1400	1400	1500	1700	1800	1900	2000	2200	2500	2600	2900	3000	3300	3700	4000
	Width(mm)	350	350	500	500	550	550	500	500	500	500	600	800	900	900	900	1000	1200	1500	1600	1800	2000	2100	2700
	Height(mm)	1450	1600	1500	1850	1850	2000	2100	2300	2100	2450	2350	2400	2600	2700	2700	2800	2800	2850	2900	3000	3000	3000	3100
Weight(KG)		120	130	230	330	390	420	550	650	750	970	1150	1300	1600	1800	2350	2850	4300	5200	6700	8000	9270	12200	13400



Combined Low Dew Point Air Dryer



Working Condition and Technical Parameters

Inlet Pressure: 0.6~1.0 Mpa Inlet temperature: ≤45℃
Dew point:-40~-70℃ Purge air:3~5%
Cooled water temperature: ≤32℃ Pressure drop: ≤0.05 Mpa

TECHNICAL PARAMETERS														
Model	Item	JMAD-1AC	JMAD-3AC	JMAD-6AC	JMAD-8AC	JMAD-10AC	JMAD-12AC	JMAD-15AC	JMAD-20AC	JMAD-25AC	JMAD-30AC	JMAD-40AC	JMAD-50AC	JMAD-60AC
Air Capacity m3/min		1.6	3.8	6.8	8.5	11.5	13.5	17	23	27	34	45	55	67
Voltage/Ph/Hz		220V/1Ph/50Hz						380V/3Ph/50Hz						
Compressor Power KW		0.6	1	2	2.5	3	3	3.5	4.2	5.3	6.7	8.3	10	13.3
Fan m3/h		965	3110	6220	8470	8470	8470	8470	8470	10560	10560	15840	15840	18000
Air Pipe Caliber		ZG1"	ZG1.5"	ZG1.5"	ZG2"	ZG2"	ZG2"	DN65	DN65	DN80	DN80	DN100	DN100	DN125
Weight (KG)		25	56	126	155	220	238	275	395	490	600	845	1008	1170
Size	Length(mm)	1170	1250	1470	1500	1760	1760	1760	1960	2030	2220	2340	2340	2520
	Width(mm)	880	885	1010	1060	1120	1180	1360	1440	1480	1640	1710	1800	2000
	Height(mm)	1408	1415	1789	2031	1864	1920	2204	2470	2470	2542	2872	2961	2990
Weight(KG)		305	510	775	920	1060	1190	1325	1740	2060	2375	2960	3320	3445

Precision filter

Model	Flow Capacity		Connection Caliber	Dimension (mm)		Filter QTY	Weight KG
	m3/min	CFM		Length	Width		
JMAF-9/7/5/3/1-001	1.5	53	ZG1"	300	105	1	1.5
JMAF-9/7/5/3/1-002	2.6	92	ZG1"	300	105	1	1.7
JMAF-9/7/5/3/1-003	3.8	134	ZG1.5"	370	125	1	2.5
JMAF-9/7/5/3/1-006	6.8	240	ZG1.5"	500	125	1	3
JMAF-9/7/5/3/1-008	8.5	300	ZG2"	600	140	1	4.5
JMAF-9/7/5/3/1-010	11.5	406	ZG2"	600	140	1	5
JMAF-9/7/5/3/1-012	13.5	477	ZG2"	800	135	1	7.5
JMAF-9/7/5/3/1-015	17	600	DN65	1000	380	1	65
JMAF-9/7/5/3/1-020	23	812	DN80	1100	380	1	70
JMAF-9/7/5/3/1-025	27	953	DN80	1100	420	1	85
JMAF-9/7/5/3/1-030	34	1200	DN100	1100	440	2	90
JMAF-9/7/5/3/1-040	45	1589	DN100	1185	440	2	100
JMAF-9/7/5/3/1-050	55	1942	DN100	1185	517	3	105
JMAF-9/7/5/3/1-060	65	988.4	DN125	1335	517	3	120
JMAF-9/7/5/3/1-080	87	3071	DN150	1335	580	4	160
JMAF-9/7/5/3/1-100	110	3883	DN150	1410	600	5	200
JMAF-9/7/5/3/1-150	165	5825	DN200	1540	600	8	250
JMAF-9/7/5/3/1-200	210	7413	DN200	1568	750	10	300
JMAF-9/7/5/3/1-250	260	9178	DN250	1700	850	12	320
JMAF-9/7/5/3/1-300	320	11296	DN250	1700	850	14	350
JMAF-9/7/5/3/1-350	360	12708	DN300	1750	950	16	420
JMAF-9/7/5/3/1-400	410	14473	DN300	1750	950	19	435

Precision filter level

Filter class	Filter precision μm	Oil content ppm
9	3	5
7	1	1
5	0.01	0.01
3	0.01	0.003
1	0.01	0.001



Air Receiver (0.8-1.6 Mpa)

No.	Model	Design Temp	Total Height	Inner Diameter	Air Inlet			Air Outlet			Support		Safety Valve Size	Drain Outlet Size	Weight KG
					H2	DN	Thread	H3	DN	Thread	D	d			
1	0.3/0.8	110	1594	550	642	50	Rp1"	1242	50	Rp1"	400	20	Rp1/2	R1/2	121
2	0.3/1.0	110	1594	550	642	50	Rp1"	1242	50	Rp1"	400	20	Rp1/2	R1/2	139
3	0.3/1.3	110	1598	550	644	50	Rp1"	1244	50	Rp1"	400	20	Rp1/2	R1/2	167
4	0.3/1.6	110	1598	550	644	50	Rp1"	1244	50	Rp1"	400	20	Rp1/2	R1/2	195
5	0.6/0.8	110	1905	700	680	65	Rp1"	1550	65	Rp1"	490	24	Rp1/2	R1/2	185
6	0.6/1.0	110	1907	700	681	65	Rp1"	1551	65	Rp1"	490	24	Rp1/2	R1/2	217
7	0.6/1.3	110	1909	700	682	65	Rp1"	1552	65	Rp1"	490	24	Rp1/2	R1/2	265
8	0.6/1.6	110	1907	700	681	65	Rp1"	1551	65	Rp1"	490	24	Rp1/2	R1/2	313
9	1.0/0.8	110	2305	800	690	65	Rp1"	1920	65	Rp1"	560	24	Rp3/4	R1/2	283
10	1.0/1.0	110	2307	800	691	65	Rp1"	1921	65	Rp1"	560	24	Rp3/4	R1/2	324
11	1.0/1.3	110	2305	800	690	65	Rp1"	1920	65	Rp1"	560	24	Rp3/4	R1/2	331
12	1.0/1.6	110	2307	800	691	65	Rp1"	1921	65	Rp1"	560	24	Rp3/4	R1/2	338
13	1.5/0.8	110	2265	1000	760	65	Rp2"	1810	65	Rp2"	700	24	Rp3/4	R1/2	408
14	1.5/1.0	110	2265	1000	760	65	Rp2"	1810	65	Rp2"	700	24	Rp3/4	R1/2	473
15	1.5/1.3	110	2267	1000	761	65	Rp2"	1811	65	Rp2"	700	24	Rp3/4	R1/2	423
16	1.5/1.6	110	2566	1000	753	65	Rp2"	2118	65	Rp2"	700	24	Rp3/4	R1/2	488
17	2.0/0.8	110	2780	1000	760	80	Rp2"	2320	80	Rp2"	700	24	Rp1"	R1/2	513
18	2.0/1.0	110	2780	1000	760	80	Rp2"	2320	80	Rp2"	700	24	Rp1"	R1/2	661
19	2.0/1.3	110	2782	1000	761	80	Rp2"	2321	80	Rp2"	700	24	Rp1"	R1/2	538
20	2.0/1.6	110	2786	1000	763	80	Rp2"	2323	80	Rp2"	700	24	Rp1"	R1/2	686
21	2.5/0.8	110	3300	1000	760	80	Rp2"	2840	80	Rp2"	700	24	Rp1"	R1/2	642
22	2.5/1.0	110	3300	1000	760	80	Rp2"	2840	80	Rp2"	700	24	Rp1"	R1/2	724
23	2.5/1.3	110	3302	1000	761	80	Rp2"	2841	80	Rp2"	700	24	Rp1"	R1/2	773
24	2.5/1.6	110	2836	1000	788	80	Rp2"	2348	80	Rp2"	700	24	Rp1"	R1/2	855
25	3.0/0.8	110	2920	1200	850	80	Rp2"	2410	80	Rp2"	906	24	Rp1"	R3/4	735
26	3.0/1.0	110	2922	1200	851	80	Rp2"	2411	80	Rp2"	906	24	Rp1"	R3/4	917
27	3.0/1.3	110	2926	1200	853	80	Rp2"	2413	80	Rp2"	906	24	Rp1"	R3/4	855
28	3.0/1.6	110	2926	1200	853	80	Rp2"	2413	80	Rp2"	906	24	Rp1"	R3/4	1037
29	4.0/0.8	110	3030	1400	910	100	Rp2"	2470	100	Rp2"	1050	24	Rp1"	R3/4	949
30	4.0/1.0	110	3032	1400	911	100	Rp2"	2471	100	Rp2"	1050	24	Rp1"	R3/4	1170
31	4.0/1.3	110	3036	1400	913	100	Rp2"	2473	100	Rp2"	1050	24	Rp1"	R3/4	1019
32	4.0/1.6	110	3040	1400	915	100	Rp2"	2475	100	Rp2"	1050	24	Rp1"	R3/4	1240
33	5.0/0.8	110	3700	1400	910	100	Rp2"	2990	100	Rp2"	1050	24	Rp2"	R3/4	1148
34	5.0/1.0	110	3702	1400	911	100	Rp2"	2991	100	Rp2"	1050	24	Rp2"	R3/4	1419
35	5.0/1.3	110	3726	1400	913	100	Rp2"	3013	100	Rp2"	1050	24	Rp2"	R3/4	1198
36	5.0/1.6	110	3730	1400	915	100	Rp2"	3015	100	Rp2"	1050	24	Rp2"	R3/4	1469
37	6.0/0.8	110	4330	1400	910	125	Rp2"	3621	125	Rp2"	1050	24	Rp2"	R3/4	1192
38	6.0/1.0	110	4332	1400	911	125	Rp2"	3621	125	Rp2"	1050	24	Rp2"	R3/4	1320
39	6.0/1.3	110	4346	1400	913	125	Rp2"	3633	125	Rp2"	1500	32	Rp2"	R3/4	1377
40	6.0/1.6	110	4350	1400	915	125	Rp2"	3635	125	Rp2"	1500	32	Rp2"	R3/4	1505
41	8.0/0.8	110	3154	2000	1082	125	Rp2"	2362	125	Rp2"	1500	32	Rp2"	R3/4	1598
42	8.0/1.0	110	3156	2000	1083	125	Rp2"	2363	125	Rp2"	1500	32	Rp2"	R3/4	1605
43	8.0/1.3	110	3190	2000	1100	125	Rp2"	2380	125	Rp2"	1500	32	Rp2"	R3/4	1960
44	8.0/1.6	110	3194	2000	1102	125	Rp2"	2382	125	Rp2"	1500	32	Rp2"	R3/4	2315
45	10/0.8	110	3754	2000	1082	150	Rp2"	2962	150	Rp2"	1500	32	Rp2"	R3/4	1847
46	10/1.0	110	3756	2000	1083	150	Rp2"	2963	150	Rp2"	1500	32	Rp2"	R3/4	2262
47	10/1.3	110	3790	2000	1100	150	Rp2"	2980	150	Rp2"	1500	32	Rp2"	R3/4	2658
48	10/1.6	110	3794	2000	1102	150	Rp2"	2982	150	Rp2"	1500	32	Rp2"	R3/4	3054
49	12/0.8	110	4354	2000	1082	150	Rp2"	3562	150	Rp2"	1500	32	Rp2"	R3/4	2104
50	12/1.0	110	4356	2000	1083	150	Rp2"	3563	150	Rp2"	1500	32	Rp2"	R3/4	2577
51	12/1.3	110	4390	2000	1100	150	Rp2"	3580	150	Rp2"	1500	32	Rp2"	R3/4	3026
52	12/1.6	110	4394	2000	1102	150	Rp2"	3582	150	Rp2"	1500	32	Rp2"	R3/4	3475
53	15/0.8	110	4531	2200	1208	150	Rp2"	3618	150	Rp2"	1650	32	Rp2"	R1	2422
54	15/1.0	110	4533	2200	1209	150	Rp2"	3619	150	Rp2"	1650	32	Rp2"	R1	2971
55	15/1.3	110	4569	2200	1227	150	Rp2"	3637	150	Rp2"	1650	32	Rp2"	R1	3497
56	15/1.6	110	4573	2200	1229	150	Rp2"	3639	150	Rp2"	1650	32	Rp2"	R1	4023
57	20/0.8	110	5246	2400	1348	200	Rp3	4168	200	Rp3	1800	36	Rp3	R1	3680



Application cases



Common configuration of air compressor system

